

Allgemeine Informationen

Katalog-Nr.: HRP-60004	GenBank-Zugangsnummer: BC004109	Reinigungsmethode: Antigen-Affinitätsreinigung
Größe: 100ul , Konzentration: 1000 µg/ml von2597 Nanodrop und 1000 µg/ml durch die Bradford-Methode mit BSA als Standard;	GeneID (NCBI): Vollständiger Name: glyceraldehyde-3-phosphate dehydrogenase	CloneNo.: 1E6D9
Wirt: Maus	Berechnete Masse: 36 kDa	Empfohlene Verdünnungen: WB 1:5000-1:50000
Isotyp: IgG2b	Beobachtete Masse: 36 kDa	

Anwendungen

Geprüfte Anwendungen: WB	Positivkontrollen: WB : HeLa-Zellen, HEK-293-Zellen, HepG2-Zellen
In Publikationen genannte Anwendungen: IF, IHC, IP, WB	
Getestete Reaktivität: Human, Maus, Pflanze, Ratte, Zebrafisch	
Zitierte Arten: Hamster, Hausschwein, Huhn, Human, Kaninchen, Maus, Ratte, Honigbienen, Opossum	

Hintergrundinformationen

Glyceraldehyde-3-phosphate dehydrogenase (GAPDH) catalyzes the phosphorylation of glyceraldehyde-3-phosphate during glycolysis. GAPDH participates in nuclear events including transcription, binding RNA, RNA transportation, DNA replication, DNA repair and apoptosis. Being stably and constitutively expressed at high levels in most tissues and cells, GAPDH is considered a housekeeping protein. It is widely used as a control for RT-PCR and also loading control in electrophoresis and Western blotting. GAPDH is normally expressed in cellular cytoplasm or membrane, but can occasionally translocate to the nucleus after the addition of post-translational modifications such as S-nitrosylation. This antibody is raised against full length GAPDH of human origin. It can recognize the 36 kDa GAPDH protein in most cells/tissues. In addition, a band below 36 kDa can always be detected as the isoform or spliced product of GAPDH (PMID: 23885286, 23877755, 19368702). Please note that some physiological factors, such as hypoxia and diabetes, increase GAPDH expression in certain cell types.

Bemerkenswerte Veröffentlichungen

Verfasser	Pubmed ID	Journal	Anwendung
Dong Yu	36183792	Brain Res	WB
Jiawei Hao	36126167	Autophagy	WB
Victoria L Messerschmidt	34651022	Front Cardiovasc Med	WB

Lagerung

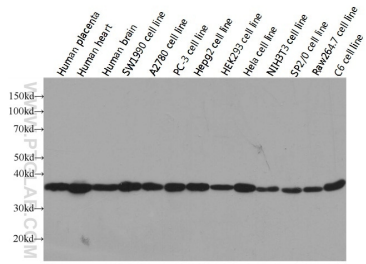
Lagerungsbedingungen:
Bei -20°C lagern. Vor Licht schützen. Nach dem Versand ein Jahr stabil.
Lagerungspuffer:
BS mit 50% Glycerin, 0,05% Proclin300, 0,5% BSA, pH 7,3.
Aliquotieren ist nicht notwendig bei -20°C Lagerung

***** 20ul-Größen enthalten 0.1% BSA**

For technical support and original validation data for this product please contact:
T: 1 (888) 4PTGLAB (1-888-478-4522) (toll free in USA), or 1(312) 455-8498 (outside USA)
E: proteintech@ptglab.com
W: ptglab.com

This product is exclusively available under Proteintech Group brand and is not available to purchase from any other manufacturer.

Ausgewählte Validierungsdaten



Western blot analysis of GAPDH in various tissues and cell lines using Proteintech antibody HRP-60004 at a dilution of 1:10000.