

## Allgemeine Informationen

|                                                                     |                                              |                                                          |
|---------------------------------------------------------------------|----------------------------------------------|----------------------------------------------------------|
| <b>Katalog-Nr.:</b><br>HRP-66002                                    | <b>GenBank-Zugangsnummer:</b><br>U73901      | <b>Reinigungsmethode:</b><br>Antigen-Affinitätsreinigung |
| <b>Größe:</b><br>100ul , Konzentration: 1000 µg/ml von<br>Nanodrop; | <b>GeneID (NCBI):</b><br>Vollständiger Name: | <b>CloneNo.:</b><br>1E10H7                               |
| <b>Wirt:</b><br>Maus                                                | <b>Berechnete Masse:</b><br>26 kDa           | <b>Empfohlene Verdünnungen:</b><br>WB 1:5000-1:50000     |
| <b>Isotyp:</b><br>IgG2a                                             | <b>Beobachtete Masse:</b><br>-               |                                                          |

## Anwendungen

|                                                                           |                                                        |
|---------------------------------------------------------------------------|--------------------------------------------------------|
| <b>Geprüfte Anwendungen:</b><br>WB                                        | <b>Positivkontrollen:</b><br>WB : Recombinant protein, |
| <b>In Publikationen genannte Anwendungen:</b><br>ColP, IF, WB             |                                                        |
| <b>Getestete Reaktivität:</b><br>Aequorea Victoria, Rekombinanten Protein |                                                        |

## Hintergrundinformationen

Protein tags are protein or peptide sequences located either on the C- or N- terminal of the target protein, which facilitates one or several of the following characteristics: solubility, detection, purification, localization and expression. Green fluorescence protein(GFP) is a protein composed of 238 amino acid residues(26.9kDa) derived from the Jellyfish Aequorea victoria, which emits green light(emission peak at 509nm) when excited by blue light(excitation peak at 395nm). GFP has become an invaluable tool in cell biology research, since its intrinsic fluorescence can be visualized in living cells. EGFP contains the double-amino-acid substitutions Phe-64 to Leu and Ser-65 to Thr(previously published as GFPmut1; PMID: 8707053). In contrast to wtGFP, EGFP has a single, strong, red-shifted excitation peak at 488nm. GFPmut1 fluoresces 35-fold more intensely than wtGFP when excited at 488nm, due to an increase in its extinction coefficient(Em). The antibody recognizes the GFP-tag, eGFP tag, eYFP tag, CFP tag or YFP tag fused to either the amino- or carboxy-terminus of targeted proteins in transfected mammalian cells. This antibody is conjugated with HRP. Note: Do not add Azium (Sodium Azide or Smite) into the dilution buffer. Azium is the HRP inhibitor which decreases the enzymatic activity of HRP.

## Bemerkenswerte Veröffentlichungen

| Verfasser    | Pubmed ID | Journal         | Anwendung |
|--------------|-----------|-----------------|-----------|
| Shu-Yi Yang  | 31659125  | Plant Physiol   |           |
| Zhihui Ruan  | 36274707  | Front Microbiol | WB,ColP   |
| Xingyu Zhang | 34018922  | Elife           | WB        |

## Lagerung

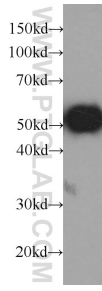
**Lagerungsbedingungen:**  
Bei -20°C lagern. Vor Licht schützen. Nach dem Versand ein Jahr stabil.  
**Lagerungspuffer:**  
BS mit 50% Glyzerin, 0,05% Proclin300, 0,5% BSA, pH 7,3.  
Aliquotieren ist nicht notwendig bei -20°C Lagerung

**\*\*\* 20ul-Größen enthalten 0.1% BSA**

For technical support and original validation data for this product please contact:  
 T: 1 (888) 4PTGLAB (1-888-478-4522) (toll free in USA), or 1(312) 455-8498 (outside USA)  
 E: [proteintech@ptglab.com](mailto:proteintech@ptglab.com)  
 W: [ptglab.com](http://ptglab.com)

**This product is exclusively available under Proteintech Group brand and is not available to purchase from any other manufacturer.**

## Ausgewählte Validierungsdaten



Recombinant protein were subjected to SDS PAGE followed by western blot with HRP-66002 (GFP tag Antibody) at dilution of 1:10000.