

Nur für Forschungszwecke

Chicken IgY Monoklonaler Antikörper

Katalog-Nr.:HRP-67405



Allgemeine Informationen

Katalog-Nr.:

HRP-67405

Größe:

100ul , Konzentration: 1000 µg/ml von
Nanodrop;

Wirt:

Maus

Isotyp:

IgG2a

GenBank-Zugangsnummer:

GeneID (NCBI):

Vollständiger Name:

Beobachtete Masse:

180 kDa, 70 kDa

Reinigungsmethode:

Protein-A-Reinigung

CloneNo.:

1E12G2

Empfohlene Verdünnungen:

WB 1:500-1:2000

Anwendungen

Geprüfte Anwendungen:

WB

Getestete Reaktivität:

Huhn

Positivkontrollen:

WB : Hühnerei,

Hintergrundinformationen

IgY (immunoglobulin Y) is a type of immunoglobulin found in birds and reptiles. High concentration of IgY exists in chicken egg yolk. In chickens, IgY is functional same to IgG. IgY antibodies do not cross-react with Fc receptors, mammalian immunoglobulins such as rheumatoid factors and HAMA or activate the complement system thus could reduce false positive results in immunological assays. This antibody was generated from chicken IgY that extracted from chicken eggs. This product recognizes the heavy chain of chicken IgY and can detect the contact form of chicken IgY (~180 kDa) and reduced form (~70 kDa).

Lagerung

Lagerungsbedingungen:

Bei -20°C lagern. Vor Licht schützen. Nach dem Versand ein Jahr stabil.

Lagerungspuffer:

BS mit 50% Glycerin, 0,05% Proclin300, 0,5% BSA, pH 7,3.

Aliquotieren ist nicht notwendig bei -20°C Lagerung

***** 20ul-Größen enthalten 0.1% BSA**

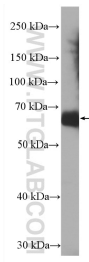
For technical support and original validation data for this product please contact:

T: 1 (888) 4PTGLAB (1-888-478-4522) (toll free
in USA), or 1(312) 455-8498 (outside USA)

E: proteintech@ptglab.com
W: ptglab.com

This product is exclusively available under Proteintech Group brand and is not available to purchase from any other manufacturer.

Ausgewählte Validierungsdaten



Lysate of Chicken egg were subjected to SDS PAGE followed by western blot with HRP-67405 (Chicken IgY antibody) at dilution of 1:1000 incubated at room temperature for 1.5 hours.