

Nur für Forschungszwecke

CD31 Monoklonaler Antikörper

Katalog-Nr.:PE-65058



Allgemeine Informationen

Katalog-Nr.: PE-65058	GenBank-Zugangsnummer: BC008519	Reinigungsmethode: Affinitätsreinigung
Größe: 100ug, 0.1 mg/ml	GeneID (NCBI): 18613	CloneNo.: 390
Wirt: Ratte	Vollständiger Name: platelet/endothelial cell adhesion molecule 1	Anregungs-/Emissionsmaxima-Wellenlängen: 496 nm, 565 nm / 578 nm
Isotyp: IgG2a		

Anwendungen

Geprüfte Anwendungen:
FC

Getestete Reaktivität:
Maus

Hintergrundinformationen

Platelet endothelial cell adhesion molecule-1 (PECAM-1, CD31) is a member of the immunoglobulin gene superfamily of cell adhesion molecules. CD31 is a transmembrane glycoprotein that is highly expressed on the surface of the endothelium, making up a large portion of its intracellular junctions. PECAM-1 is also present on the surface of hematopoietic cells and immune cells including platelets, monocytes, neutrophils, natural killer cells, megakaryocytes and some types of T-cell (PMID: 9011572). As well as its role in cell-cell adhesion, PECAM-1 functions as a signaling receptor, and is involved in important physiological events such as nitric oxide production, regulation of T-cell immunity and tolerance, leukocyte transendothelial migration and inflammation and angiogenesis (PMID: 21183735; 20978210; 17872453; 20634489).

Lagerung

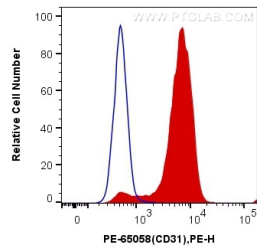
Lagerungsbedingungen:
Bei 2-8°C lagern. Vor Licht schützen.

Lagerungspuffer:
PBS mit 0,1% Natriumazid und einem Stabilisator.

For technical support and original validation data for this product please contact:
T: 1 (888) 4PTGLAB (1-888-478-4522) (toll free in USA), or 1(312) 455-8498 (outside USA) E: proteintech@ptglab.com
W: ptglab.com

This product is exclusively available under Proteintech Group brand and is not available to purchase from any other manufacturer.

Ausgewählte Validierungsdaten



1X10⁶ BALB/c mouse splenocytes were surface stained with 0.2 ug PE Anti-Mouse CD31 (PE-65058, Clone: 390) (red) or 0.2 ug PE-rat IgG2a isotype control (blue). Cells were not fixed.