

Nur für Forschungszwecke

# CD274 (PD-L1, B7-H1) Monoklonaler Antikörper



Katalog-Nr.:PE-65073

1 Publikationen

## Allgemeine Informationen

Katalog-Nr.: PE-65073	GenBank-Zugangsnummer: BC066841	Reinigungsmethode: Affinitätsreinigung
Größe: 100ug, 0.2 mg/ml	GeneID (NCBI): 60533	CloneNo.: 10F.9G2
Wirt: Ratte	Vollständiger Name: CD274 antigen	Anregungs-/Emissionsmaxima- Wellenlängen: 496 nm, 565 nm / 578 nm
Isotyp: IgG2b		

## Anwendungen

Geprüfte Anwendungen:  
FC

In Publikationen genannte Anwendungen:  
FC

Getestete Reaktivität:  
Maus

Zitierte Arten:  
Human

## Hintergrundinformationen

Programmed cell death ligand 1 (PD-L1, CD274, or B7-H1), is the first member of B7 family to be discovered. B7 family molecules are type I transmembrane proteins belonging to the immunoglobulin superfamily. In concert with their CD28 family receptors, the B7s are key regulators of the adaptive immune response. PD-L1 is suggested as a negative regulator of T and B cell, and plays important role in mediating tolerance of lymphocytes to self-antigens. It is also involved in the costimulatory signal, essential for T-cell proliferation and production of IL10 and IFNG, in an IL2-dependent and a PD-1-independent manner.

## Bemerkenswerte Veröffentlichungen

Verfasser	Pubmed ID	Journal	Anwendung
Xing Chang	37146833	Biochem Pharmacol	FC

## Lagerung

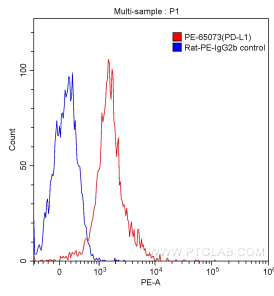
Lagerungsbedingungen:  
Bei 2-8°C lagern. Vor Licht schützen.

Lagerungspuffer:  
Phosphatbasierter Puffer mit 0,09% Natriumazid und 0,1% Gelatine, pH 7,2.

For technical support and original validation data for this product please contact:  
T: 1 (888) 4PTGLAB (1-888-478-4522) (toll free in USA), or 1(312) 455-8498 (outside USA)  
E: proteintech@ptglab.com  
W: ptglab.com

This product is exclusively available under Proteintech Group brand and is not available to purchase from any other manufacturer.

## Ausgewählte Validierungsdaten



1X10<sup>6</sup> mouse splenocytes cells were stained with 0.20ug CD274 (PD-L1, B7-H1) antibody (PE-65073, red) and control antibody (blue). Cells were not fixed.