

Nur für Forschungszwecke

# FcεR1 Monoklonaler Antikörper

Katalog-Nr.: PE-65091



## Allgemeine Informationen

<b>Katalog-Nr.:</b> PE-65091	<b>GenBank-Zugangsnummer:</b> BC125455	<b>Reinigungsmethode:</b> Affinitätsreinigung
<b>Größe:</b> 100µg, 0.2 mg/ml	<b>GeneID (NCBI):</b> 14125	<b>CloneNo.:</b> MAR-1
<b>Wirt:</b> Armenian Hamster	<b>Vollständiger Name:</b> Fc receptor, IgE, high affinity I, alpha polypeptide	<b>Anregungs-/Emissionsmaxima-Wellenlängen:</b> 496 nm, 565 nm / 578 nm
<b>Isotyp:</b> IgG		

## Anwendungen

**Geprüfte Anwendungen:**  
FC

**Getestete Reaktivität:**  
Maus

## Hintergrundinformationen

Fc epsilon Receptor I alpha (FcεR1a) is a single-pass type I membrane protein which contains 2 immunoglobulin-like domains. FcεR1a forms a tetrameric complex with one beta and two gamma subunits (PMID: 19406478). FcεR1 is the high-affinity receptor for the Fc region of immunoglobulin E (IgE) (PMID: 1532373). It is expressed on mast cells and basophils and plays a central role in the allergic response (PMID: 2148316).

## Lagerung

**Lagerungsbedingungen:**  
Bei 2-8°C lagern. Vor Licht schützen.

**Lagerungspuffer:**  
Phosphatbasierter Puffer mit 0,09% Natriumazid und 0,1% Gelatine, pH 7,2.

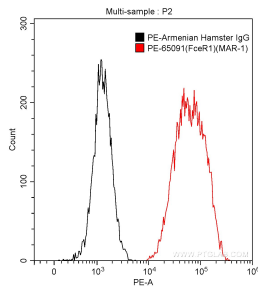
For technical support and original validation data for this product please contact:

T: 1 (888) 4PTGLAB (1-888-478-4522) (toll free in USA), or 1(312) 455-8498 (outside USA)

E: [proteintech@ptglab.com](mailto:proteintech@ptglab.com)  
W: [ptglab.com](http://ptglab.com)

**This product is exclusively available under Proteintech Group brand and is not available to purchase from any other manufacturer.**

## Ausgewählte Validierungsdaten



$1 \times 10^6$  MC/9 cells were surface stained with 0.13  $\mu$ g PE Anti-Mouse Fc $\epsilon$ R1 (PE-65091, Clone: MAR-1) (red) or 0.13  $\mu$ g isotype control antibody (black). Cells were not fixed.