

Nur für Forschungszwecke

TCR Beta Monoklonaler Antikörper

Katalog-Nr.:PE-65106



Allgemeine Informationen

Katalog-Nr.: PE-65106	GenBank-Zugangsnummer: GeneID (NCBI): 21577	Reinigungsmethode: Affinitätsreinigung
Größe: 100ug, 0.2 mg/ml	Vollständiger Name: T-cell receptor beta chain	CloneNo.: H57-597
Wirt: Armenian Hamster		Anregungs-/Emissionsmaxima-Wellenlängen: 496 nm, 565 nm / 578 nm
Isotyp: IgG		

Anwendungen

Geprüfte Anwendungen:
FC
Getestete Reaktivität:
Maus

Hintergrundinformationen

T-cell receptor (TCR) consists of heterodimeric glycoproteins (TCR alpha/beta or gamma/delta) that demonstrate homology with immunoglobulins (PMID: 2144901). TCR beta is a member of the immunoglobulin superfamily and is expressed on alpha/beta TCR-bearing T cells and thymocytes. The TCR heterodimers are noncovalently associated with CD3. The TCR/CD3 complex of T-lymphocytes consists of either a TCR alpha/beta or TCR gamma/delta heterodimer coexpressed at the cell surface with the invariant subunits of CD3 labeled gamma, delta, epsilon, zeta, and eta (PMID: 1826255). The TCR recognizes antigens bound to major histocompatibility complex (MHC) molecules. TCR-mediated peptide-MHC recognition is transmitted to the CD3 complex, leading to the intracellular signal transduction (PMID: 11985657).

Lagerung

Lagerungsbedingungen:
Bei 2-8°C lagern. Vor Licht schützen.
Lagerungspuffer:
Phosphatbasierter Puffer mit 0,09% Natriumazid und 0,1% Gelatine, pH 7,2.

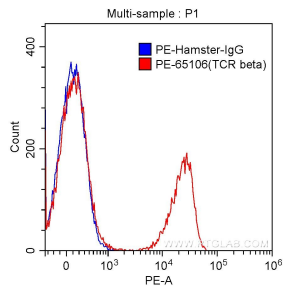
For technical support and original validation data for this product please contact:

T: 1 (888) 4PTGLAB (1-888-478-4522) (toll free in USA), or 1(312) 455-8498 (outside USA)

E: proteintech@ptglab.com
W: ptglab.com

This product is exclusively available under Proteintech Group brand and is not available to purchase from any other manufacturer.

Ausgewählte Validierungsdaten



1×10^6 C57BL/6 mouse splenocytes were surface stained with 0.25 μ g PE-Anti-Mouse TCR beta (PE-65106, clone H57-597) (red) or 0.25 μ g PE-Armenian Hamster IgG isotype control (blue). Cells were not fixed.