

Nur für Forschungszwecke

CD161 Monoklonaler Antikörper

Katalog-Nr.:PE-65115



Allgemeine Informationen

Katalog-Nr.:

PE-65115

Größe:

100tests, 5 µl/test

Wirt:

Maus

Isotyp:

IgG1, kappa

GenBank-Zugangsnummer:

BC114516

GeneID (NCBI):

3820

Vollständiger Name:

killer cell lectin-like receptor
subfamily B, member 1

Berechnete Masse:

225 aa, 25 kDa

Reinigungsmethode:

Affinitätsreinigung

CloneNo.:

HP-3G10

Anregungs-/Emissionsmaxima-
Wellenlängen:

496 nm, 565 nm / 578 nm

Anwendungen

Geprüfte Anwendungen:

FC

Getestete Reaktivität:

Human

Hintergrundinformationen

Lagerung

Lagerungsbedingungen:

Store at 2-8°C. Avoid exposure to light. Stable for one year after shipment.

Lagerungspuffer:

Phosphatbasierter Puffer mit 0,09% Natriumazid und 0,1% Gelatine, pH 7,2.

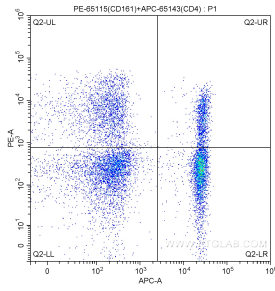
For technical support and original validation data for this product please contact:

T: 1 (888) 4PTGLAB (1-888-478-4522) (toll free
in USA), or 1(312) 455-8498 (outside USA)

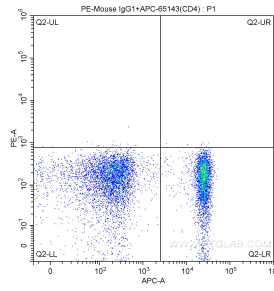
E: proteintech@ptglab.com
W: ptglab.com

This product is exclusively available under Proteintech Group brand and is not available to purchase from any other manufacturer.

Ausgewählte Validierungsdaten



1X10⁶ human peripheral blood lymphocytes were surface stained with 5.00 ul/test APC-Anti-Human CD4 (APC-65143, Clone:RPA-T4) and 5.00 ul/test PE-Anti-Human CD161 (PE-65115, Clone:HP-3G10). Cells were not fixed.



1X10⁶ human peripheral blood lymphocytes were surface stained with 5.00 ul/test APC-Anti-Human CD4 (APC-65143, Clone: RPA-T4) and 0.50 ug PE-mouse IgG1 isotype control. Cells were not fixed.