

Nur für Forschungszwecke

# IgG1 Isotype Control Monoklonaler Antikörper



Katalog-Nr.: PE-65124

## Allgemeine Informationen

Katalog-Nr.:

PE-65124

Größe:

100ug, 0.2 mg/ml

Wirt:

Maus

Isotyp:

IgG1

GenBank-Zugangsnummer:

GeneID (NCBI):

16017

Vollständiger Name:

immunoglobulin heavy constant gamma 1 (G1m marker)

Reinigungsmethode:

Affinitätsreinigung

CloneNo.:

MOPC-21

Anregungs-/Emissionsmaxima-Wellenlängen:

496 nm, 565 nm / 578 nm

## Anwendungen

Geprüfte Anwendungen:

FC

Getestete Reaktivität:

## Hintergrundinformationen

The MOPC-21 immunoglobulin is useful as an isotype-matched control. The MOPC-21 immunoglobulin has an unknown binding specificity and is used as an isotype control for mouse IgG1 antibodies. This antibody has been quality-tested for flow cytometry as negative control.

## Lagerung

Lagerungsbedingungen:

Bei 2-8°C lagern. Vor Licht schützen.

Lagerungspuffer:

Phosphatbasierter Puffer mit 0,09% Natriumazid und 0,1% Gelatine, pH 7,2.

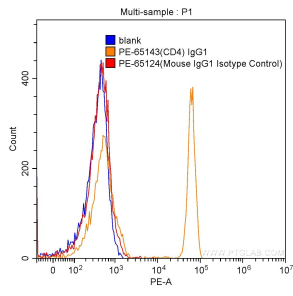
For technical support and original validation data for this product please contact:

T: 1 (888) 4PTGLAB (1-888-478-4522) (toll free in USA), or 1(312) 455-8498 (outside USA)

E: [proteintech@ptglab.com](mailto:proteintech@ptglab.com)  
W: [ptglab.com](http://ptglab.com)

This product is exclusively available under Proteintech Group brand and is not available to purchase from any other manufacturer.

## Ausgewählte Validierungsdaten



1X10<sup>6</sup> human peripheral blood lymphocytes were surface stained with 0.50 ug PE Mouse IgG1 Isotype Control (PE-65124, clone: MOPC-21) (red) or with 0.50 ug PE Anti-Human CD4 (PE-65143, clone: RPA-T4) (orange), or not stained (blank) (blue). Cells were not fixed.