

Nur für Forschungszwecke

Ly-6G/Ly-6C (Gr-1) Monoklonaler Antikörper



Katalog-Nr.: PE-65140

2 Publikationen

Allgemeine Informationen

Katalog-Nr.: PE-65140	GenBank-Zugangsnummer: X70920	Reinigungsmethode: Affinitätsreinigung
Größe: 100ug, 0.2 mg/ml	GeneID (NCBI): 546644	CloneNo.: RB6-8C5
Wirt: Ratte	Vollständiger Name: Lymphocyte antigen 6 complex, locus G	Anregungs-/Emissionsmaxima-Wellenlängen: 496 nm, 565 nm / 578 nm
Isotyp: IgG2b, kappa		

Anwendungen

Geprüfte Anwendungen:
FC

In Publikationen genannte Anwendungen:
FC

Getestete Reaktivität:
Maus

Zitierte Arten:
Maus

Hintergrundinformationen

Ly-6G (Lymphocyte antigen 6 complex, locus G), also known as Gr-1, is a 21-25 kDa, glycosylphosphatidylinositol-anchored protein expressed on myeloid lineage cells in mouse bone marrow (PMID: 8360469). The expression of Ly-6G increases on neutrophils as they differentiate from immature cells in the bone marrow to mature cells in the blood and spleen (PMID: 8890901). Antibodies targeting Ly6G (RB6-8C5 or 1A8) are commonly used in studies aimed at identifying the role of neutrophils (PMID: 23543767). The RB6-8C5 mAb has been reported to cross-react with Ly-6C on cells expressing Ly-6C (PMID: 8360469).

Bemerkenswerte Veröffentlichungen

Verfasser	Pubmed ID	Journal	Anwendung
Xiangmin He	35302173	Int J Mol Med	
Hanyue Chang	34290225	Cell Death Dis	FC

Lagerung

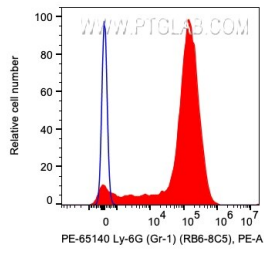
Lagerungsbedingungen:
Store at 2-8°C. Avoid exposure to light. Stable for one year after shipment.

Lagerungspuffer:
PBS with 0.09% sodium azide and 0.5% BSA, pH 7.3.

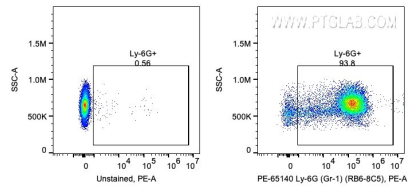
For technical support and original validation data for this product please contact:
T: 1 (888) 4PTGLAB (1-888-478-4522) (toll free in USA), or 1(312) 455-8498 (outside USA)
E: proteintech@ptglab.com
W: ptglab.com

This product is exclusively available under Proteintech Group brand and is not available to purchase from any other manufacturer.

Ausgewählte Validierungsdaten



1X10⁶ mouse bone marrow cells were surface stained with 0.06 ug PE Anti-Mouse Ly-6G/Ly-6C (Gr-1) (PE-65140, Clone: RB6-8C5). Cells were not fixed.



1X10⁶ mouse bone marrow cells were surface stained with 0.06 ug PE Anti-Mouse Ly-6G/Ly-6C (Gr-1) (PE-65140, Clone: RB6-8C5). Cells were not fixed.