

Nur für Forschungszwecke

CD45RO Monoklonaler Antikörper

Katalog-Nr.:PE-65150



Allgemeine Informationen

Katalog-Nr.: PE-65150	GenBank-Zugangsnummer: BC014239	Reinigungsmethode: Affinitätsreinigung
Größe: 100ug, 5 µl/test	GeneID (NCBI): 5788	CloneNo.: UCHL1
Wirt: Maus	Vollständiger Name: protein tyrosine phosphatase, receptor type, C	Anregungs-/Emissionsmaxima-Wellenlängen: 496 nm, 565 nm / 578 nm
Isotyp: IgG2a, kappa		

Anwendungen

Geprüfte Anwendungen:
FC

Getestete Reaktivität:
Human

Hintergrundinformationen

CD45, also known as protein tyrosine phosphatase, receptor type C, is a type I transmembrane protein expressed on the surface of all haematopoietic cells with the exception of erythrocytes and platelets (PMID: 3489673; 28615666). CD45 is a pan-haematopoietic cell marker and has been shown to be essential for T- and B-cell activation and signalling (PMID: 9429890; 16378097). CD45 exists as multiple isoforms due to alternative splicing of three exons (4, 5, and 6, designated A, B, and C) in the extracellular domain (PMID: 12414720). CD45RO is the shortest CD45 isoform (lacking all three exons) and is expressed by activated and memory T cells, thymocytes, some B cells, and weakly on granulocytes and macrophage (PMID: 27100180; 12414720).

Lagerung

Lagerungsbedingungen:
Store at 2-8°C. Avoid exposure to light. Stable for one year after shipment.

Lagerungspuffer:
Phosphatbasierter Puffer mit 0,09% Natriumazid und 0,1% Gelatine, pH 7,2.

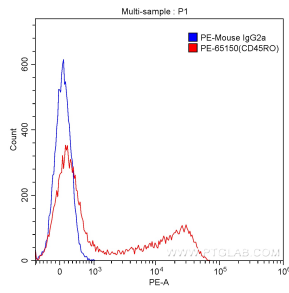
For technical support and original validation data for this product please contact:

T: 1 (888) 4PTGLAB (1-888-478-4522) (toll free in USA), or 1(312) 455-8498 (outside USA)

E: proteintech@ptglab.com
W: ptglab.com

This product is exclusively available under Proteintech Group brand and is not available to purchase from any other manufacturer.

Ausgewählte Validierungsdaten



1X10⁶ human peripheral blood lymphocytes were surface stained with 5.00 ul/test PE-anti-human CD45RO (PE-65150, clone: UCHL1) (red) or 0.50 ug PE-mouse IgG2a isotype control (blue). Cells were not fixed.