

À des fins de recherche uniquement

Anticorps Polyclonal de lapin anti-GST Tag



Numéro de catalogue: 10000-0-AP

163 Publications

Informations de base

Numéro de catalogue:
10000-0-AP

Taille:
150ul , Concentration: 500 µg/ml by
Bradford method using BSA as the
standard;

Hôte:
Lapin

Isotype:
IgG

Numéro d'acquisition GenBank:
FN315687

Identification du gène (NCBI):

Nom complet:

MW calculé
26 kDa

Méthode de purification:
Purification par affinité contre
l'antigène

Dilutions recommandées:
WB 1:1000-1:4000

Applications

Applications testées:
FC, WB, ELISA

Demandes citées:
ChIP, CoIP, ELISA, IF, IP, WB

Spécificité de l'espèce:
Protéine recombinante

Espèces citées:
Humain

Contrôles positifs:

WB : Protéine recombinante,

Informations générales

GST(Glutathione S-Transferase) is a widely used protein tag encoded by the Schistosoma japonicum. GST provides both an easily detectable tag and a simple purification process with little effect on the biological function of the protein of interest. This GST-fusion protein can then be purified from cells via its high affinity for glutathione. Antibodies to GST are useful for checking protein expression both in plaques and on western blots as well as for immunoaffinity purification of proteins expressed in cells. This antibody can be used to detect the GST tagged protein. This antibody can be used as Rabbit IgG control in FC.

Publications notables

Autrice	Pubmed ID	Journal	Application
Xingfeng Liu	36131205	Nat Metab	WB
Tianyu Han	30231667	Autophagy	
Xiangying Luo	34536269	Aging (Albany NY)	WB

Stockage

Stockage:

Stocker à -20°C. Stable pendant un an après l'expédition.

Tampon de stockage:

PBS avec azoture de sodium à 0,02 % et glycérol à 50 % pH 7,3

L'aliquotage n'est pas nécessaire pour le stockage à -20C

*** Les 20ul contiennent 0,1% de BSA.

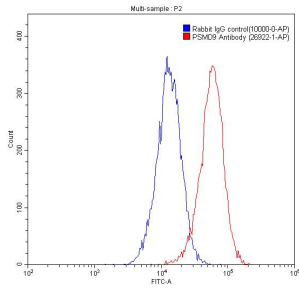
For technical support and original validation data for this product please contact:

T: 1 (888) 4PTGLAB (1-888-478-4522) (toll free
in USA), or 1(312) 455-8498 (outside USA)

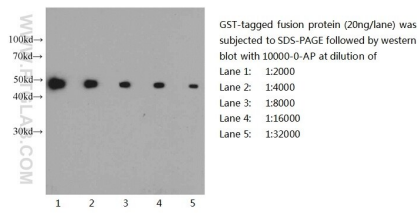
E: proteintech@ptglab.com
W: ptglab.com

This product is exclusively available under Proteintech Group brand and is not available to purchase from any other manufacturer.

Données de validation sélectionnées



1×10^6 HeLa cells were stained with 0.20 ug PSMD9 antibody (26922-1-AP, red) and 0.20 ug Rabbit IgG control (10000-0-AP, blue). Fixed with 90% MeOH.



Western blot of GST-tagged fusion protein with anti-GST-tag (10000-0-AP) at various dilutions.