

À des fins de recherche uniquement

# Anticorps Polyclonal de lapin anti-Icam-1



Numéro de catalogue: 10020-1-AP

Phare

67 Publications

## Informations de base

Numéro de catalogue:

10020-1-AP

Taille:

150ul, Concentration: 4500 µg/ml by Nanodrop;

Hôte:

Lapin

Isotype:

IgG

Numéro d'acquisition GenBank:

NM\_010493

Identification du gène (NCBI):

15894

Nom complet:

intercellular adhesion molecule 1

MW calculé

59 kDa

MW observés:

95-100 kDa

Méthode de purification:

Purification par affinité contre l'antigène

Dilutions recommandées:

WB 1:1000-1:4000

IHC 1:3200-1:12800

IF 1:500-1:2000

## Applications

Applications testées:

IF, IHC, WB, ELISA

Demandes citées:

FC, IF, IHC, WB

Spécificité de l'espèce:

rat, souris

Espèces citées:

bovin, rat, souris, Hamster

Contrôles positifs:

WB : tissu cérébral de souris, tissu hépatique de souris, tissu splénique de souris

IHC : tissu pulmonaire de souris, tissu hépatique de souris

IF : tissu hépatique de souris,

**Remarque-IHC: il est suggéré de démasquer l'antigène avec un tampon de TE buffer pH 9,0; (\*) À défaut, le démasquage de l'antigène peut être effectué avec un tampon citrate pH 6,0.**

## Informations générales

ICAM-1 (Intercellular Adhesion Molecule-1, CD54) is a glycosylated, transmembrane protein, a member of Ig super family. This protein involves in cell adhesion by interacting with a number of 2 integrin family members such as LFA-1 and Mac-1. Its expression is regulated by chemokines. This antibody is raised against mouse Icam-1 which is a cell surface sialoglycoprotein with an apparent molecular weight of 95-100 kDa (PMID: 10064885; 2571505).

## Publications notables

Autrice	Pubmed ID	Journal	Application
Philipp-Sebastian Koch	34658910	Front Physiol	WB
Ye Tian	36212957	Evid Based Complement Alternat Med	IF
Linda Lorenz	30258227	Nature	IF

## Stockage

Stockage:

Stocker à -20°C. Stable pendant un an après l'expédition.

Tampon de stockage:

PBS avec azoture de sodium à 0,02 % et glycérol à 50 % pH 7,3

L'aliquotage n'est pas nécessaire pour le stockage à -20C

\*\*\* Les 20ul contiennent 0,1% de BSA.

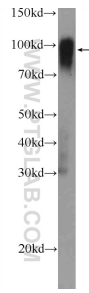
For technical support and original validation data for this product please contact:

T: 1 (888) 4PTGLAB (1-888-478-4522) (toll free in USA), or 1(312) 455-8498 (outside USA)

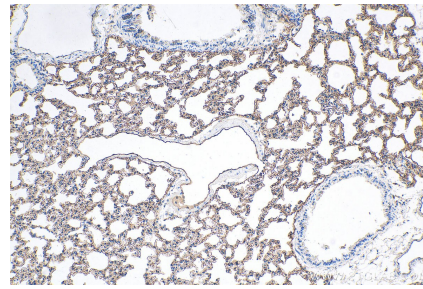
E: proteintech@ptglab.com  
W: ptglab.com

This product is exclusively available under Proteintech Group brand and is not available to purchase from any other manufacturer.

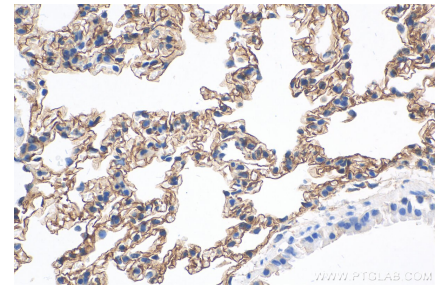
## Données de validation sélectionnées



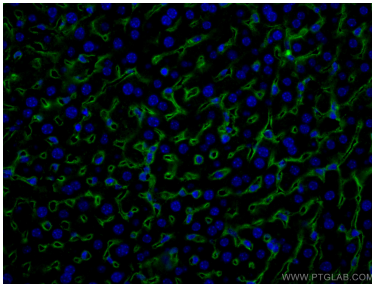
mouse brain tissue were subjected to SDS PAGE followed by western blot with 10020-1-AP (Icam-1 antibody) at dilution of 1:2000 incubated at room temperature for 1.5 hours.



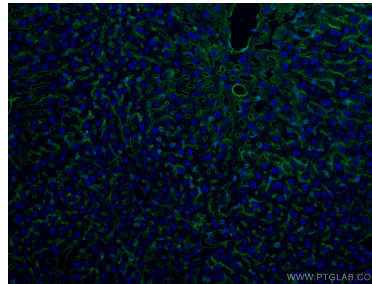
Immunohistochemical analysis of paraffin-embedded mouse lung tissue slide using 10020-1-AP (Icam-1 antibody) at dilution of 1:6400 (under 10x lens). Heat mediated antigen retrieval with Tris-EDTA buffer (pH 9.0).



Immunohistochemical analysis of paraffin-embedded mouse lung tissue slide using 10020-1-AP (Icam-1 antibody) at dilution of 1:6400 (under 40x lens). Heat mediated antigen retrieval with Tris-EDTA buffer (pH 9.0).



Immunofluorescent analysis of (4% PFA) fixed mouse liver tissue using Icam-1 antibody (10020-1-AP) at dilution of 1:1000 and CoraLite®488-Conjugated AffiniPure Goat Anti-Rabbit IgG(H+L).



Immunofluorescent analysis of (4% PFA) fixed mouse liver tissue using Icam-1 antibody (10020-1-AP) at dilution of 1:1000 and CoraLite®488-Conjugated AffiniPure Goat Anti-Rabbit IgG(H+L).