

À des fins de recherche uniquement

# Anticorps Polyclonal de lapin anti-clAP1



Numéro de catalogue: 10022-1-AP

Phare

18 Publications

## Informations de base

Numéro de catalogue:

10022-1-AP

Taille:

150ul, Concentration: 450 µg/ml by Nanodrop and 247 µg/ml by Bradford method using BSA as the standard;

Hôte:

Lapin

Isotype:

IgG

Immunogen Catalog Number:

AG15203

Numéro d'acquisition GenBank:

BC016174

Identification du gène (NCBI):

329

Nom complet:

baculoviral IAP repeat-containing 2

MW calculé

618 aa, 70 kDa

MW observés:

70 kDa, 55-60 kDa

Méthode de purification:

Purification par affinité contre l'antigène

Dilutions recommandées:

WB 1:500-1:2000

IHC 1:50-1:500

IF 1:50-1:500

## Applications

Applications testées:

IF, IHC, WB, ELISA

Demandes citées:

IF, IHC, WB

Spécificité de l'espèce:

Humain, souris

Espèces citées:

Humain, poisson-zèbre, souris

**Remarque-IHC: il est suggéré de démasquer l'antigène avec un tampon de TE buffer pH 9,0; (\*) A défaut, 'le démasquage de l'antigène peut être 'effectué avec un tampon citrate pH 6,0.**

Contrôles positifs:

WB : tissu de muscle squelettique de souris, cellules Jurkat, tissu cérébral de souris, tissu hépatique de souris, tissu testiculaire de souris

IHC : tissu testiculaire humain, tissu pancréatique humain

IF : cellules HepG2,

## Informations générales

BIRC2 (also known as clAP1) is a member of the inhibitor of apoptosis protein (IAP) family. The inhibitor of apoptosis (IAP) proteins are a family of anti-apoptotic regulators found in viruses and metazoans. BIRC2 is a nuclear shuttling protein, whose subcellular localization is mediated by the CRM1-dependent nuclear export pathway (PMID: 15265700). The protein is regulated transcriptionally and can be inhibited by mitochondrial proteins released in the cytoplasm upon apoptotic stimuli (PMID: 15187025). BIRC2 is also believed to be a critical regulator of vascular integrity and endothelial cell survival, thereby providing an additional target pathway for the control of angiogenesis and blood vessel homeostasis during embryogenesis, regeneration and tumorigenesis (PMID: 17934460). This BIRC2 antibody (10022-1-AP) can bind both full length (70kd) and cleaved form (60kd) of the protein.

## Publications notables

Autrice	Pubmed ID	Journal	Application
Lei Wang	32882585	Biomed Pharmacother	WB
Michael Hinz	20932475	Mol Cell	WB
Dongsheng Nie	26607717	Biol Reprod	WB

## Stockage

Stockage:

Stocker à -20°C. Stable pendant un an après l'expédition.

Tampon de stockage:

PBS avec azoture de sodium à 0,02 % et glycérol à 50 % pH 7,3

L'aliquotage n'est pas nécessaire pour le stockage à -20C

\*\*\* Les 20ul contiennent 0,1% de BSA.

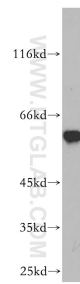
For technical support and original validation data for this product please contact:

T: 1 (888) 4PTGLAB (1-888-478-4522) (toll free in USA), or 1(312) 455-8498 (outside USA)

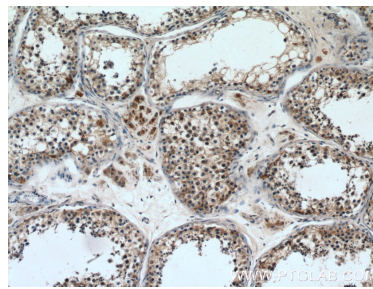
E: proteintech@ptglab.com  
W: ptglab.com

This product is exclusively available under Proteintech Group brand and is not available to purchase from any other manufacturer.

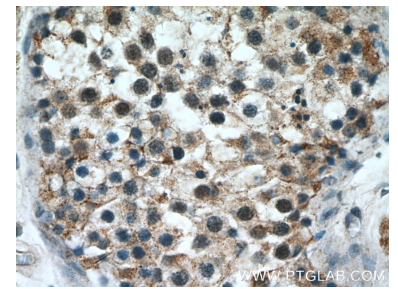
## Données de validation sélectionnées



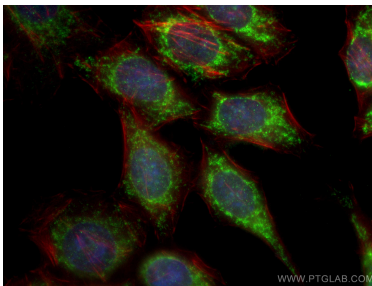
mouse skeletal muscle tissue were subjected to SDS PAGE followed by western blot with 10022-1-AP (cIAP1 antibody) at dilution of 1:1000 incubated at room temperature for 1.5 hours.



Immunohistochemical analysis of paraffin-embedded human testis tissue slide using 10022-1-AP (cIAP1 Antibody) at dilution of 1:200 (under 10x lens).



Immunohistochemical analysis of paraffin-embedded human testis tissue slide using 10022-1-AP (cIAP1 Antibody) at dilution of 1:200 (under 40x lens).



Immunofluorescent analysis of (4% PFA) fixed HepG2 cells using 10022-1-AP (cIAP1 antibody), at dilution of 1:200 and Coralite@488-Conjugated AffiniPure Goat Anti-Rabbit IgG(H+L).