

À des fins de recherche uniquement

# Anticorps Polyclonal de lapin anti-Paxillin



Numéro de catalogue: 10029-1-Ig **12 Publications**

## Informations de base

<b>Numéro de catalogue:</b> 10029-1-Ig	<b>Numéro d'acquisition GenBank:</b> NM_002859	<b>Méthode de purification:</b> Purification par protéine A
<b>Taille:</b> 150ul, Concentration: 2800 µg/ml by Nanodrop and 1200 µg/ml by Bradford method using BSA as the standard;	<b>Identification du gène (NCBI):</b> paxillin	<b>Dilutions recommandées:</b> WB 1:1000-1:4000 IP 0.5-4.0 ug for IP and 1:500-1:2000 for WB IHC 1:50-1:500 IF 1:50-1:500
<b>Hôte:</b> Lapin	<b>Nom complet:</b> paxillin	
<b>Isotype:</b> IgG	<b>MW calculé:</b> 68 kDa	
	<b>MW observés:</b> 68 kDa	

## Applications

### Applications testées:

IF, IHC, IP, WB, ELISA

### Demandes citées:

IF, IHC, WB

### Spécificité de l'espèce:

Humain, souris

### Espèces citées:

Humain, souris

### Contrôles positifs:

**WB** : tissu cérébral de souris, cellules COLO 320, cellules Jurkat, cellules MCF-7

**IP** : tissu cérébral de souris,

**IHC** : tissu de cancer du foie humain,

**IF** : cellules HUVEC, cellules HepG2, cellules NIH/3T3

**Remarque-IHC: il est suggéré de démasquer l'antigène avec un tampon de TE buffer pH 9,0; (\*) À défaut, le démasquage de l'antigène peut être effectué avec un tampon citrate pH 6,0.**

## Informations générales

PXN (paxillin) is a 68 kDa scaffold protein that interacts with multiple structural and signaling proteins and regulates cell adhesion, migration, proliferation, and apoptosis. PXN is thought to play an important role in tumor migration, invasion, and metastasis (21045234). PXN has been identified as a direct substrate of protein tyrosine phosphatase receptor-type T (PTPRT), a potent tumor suppressor gene. Increased phospho-PXN at tyrosine residue 88 (Y88) has been found as a common feature of human colon cancers (20133777).

## Publications notables

Autrice	Pubmed ID	Journal	Application
Zhaoyue Meng	36175399	Nat Commun	IHC
Xianhui Li	28916983	J Mater Sci Mater Med	WB
Qingxiu Yao	34708331	Mol Neurobiol	IF

## Stockage

### Stockage:

Stocker à -20°C. Stable pendant un an après l'expédition.

### Tampon de stockage:

PBS avec azoture de sodium à 0,02 % et glycérol à 50 % pH 7,3

L'aliquotage n'est pas nécessaire pour le stockage à -20C

**\*\*\* Les 20ul contiennent 0,1% de BSA.**

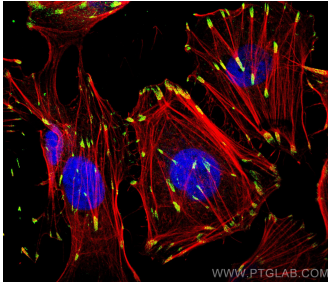
For technical support and original validation data for this product please contact:

T: 1 (888) 4PTGLAB (1-888-478-4522) (toll free in USA), or 1(312) 455-8498 (outside USA)

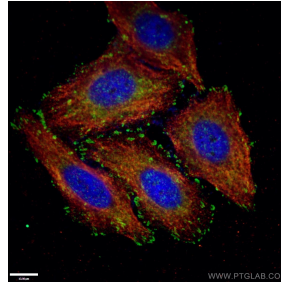
E: proteintech@ptglab.com  
W: ptglab.com

**This product is exclusively available under Proteintech Group brand and is not available to purchase from any other manufacturer.**

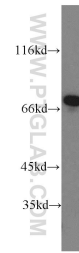
## Données de validation sélectionnées



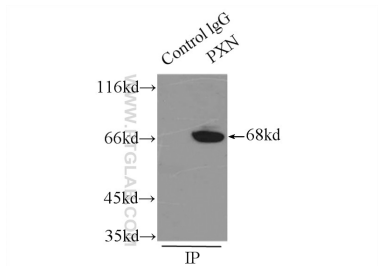
Immunofluorescent analysis of (4% PFA) fixed HUVEC cells using Paxillin antibody (10029-1-Ig) at dilution of 1:200 and CoraLite®488-Conjugated AffiniPure Goat Anti-Rabbit IgG(H+L), CL594-Phalloidin (red). DAPI (blue).



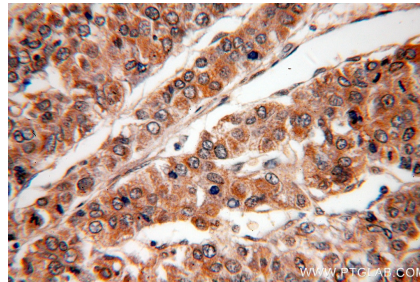
Immunofluorescent analysis of -20°C Ethanol fixed HepG2 cells using 10029-1-Ig (Paxillin antibody) at dilution of 1:50 and Alexa Fluor 488-conjugated AffiniPure Goat Anti-Rabbit IgG(H+L). The cytoskeleton was labelled in red with 66031-1-Ig (alpha tubulin). DAPI (blue).



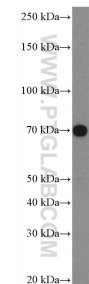
mouse brain tissue were subjected to SDS PAGE followed by western blot with 10029-1-Ig (PaxN antibody) at dilution of 1:1000 incubated at room temperature for 1.5 hours.



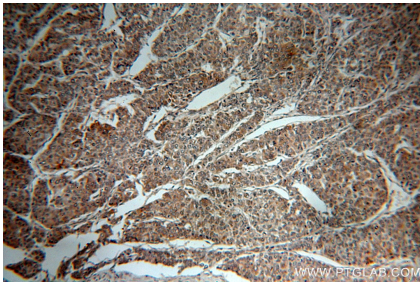
IP Result of anti-PXN (IP:10029-1-Ig, 3ug; Detection:10029-1-Ig 1:1000) with mouse brain tissue lysate 7500ug.



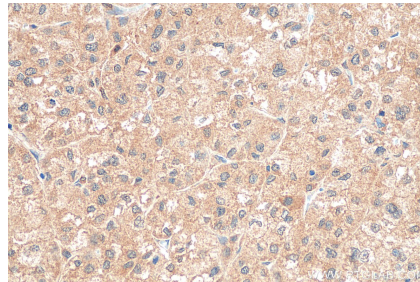
Immunohistochemical analysis of paraffin-embedded human liver cancer using 10029-1-Ig(PXN antibody) at dilution of 1:50 (under 40x lens).



COLO 320 cells were subjected to SDS PAGE followed by western blot with 10029-1-Ig (Paxillin Antibody) at dilution of 1:1000 incubated at room temperature for 1.5 hours.



Immunohistochemical analysis of paraffin-embedded human liver cancer using 10029-1-Ig(PXN antibody) at dilution of 1:50 (under 10x lens).



Immunohistochemical analysis of paraffin-embedded human liver cancer tissue slide using 10029-1-Ig (Paxillin antibody) at dilution of 1:200 (under 40x lens). Heat mediated antigen retrieval with Tris-EDTA buffer (pH 9.0).