

À des fins de recherche uniquement

Anticorps Polyclonal de lapin anti-GRB7



Numéro de catalogue: 10045-1-Ig

Phare

2 Publications

Informations de base

Numéro de catalogue: 10045-1-Ig	Numéro d'acquisition GenBank: BC006535	Méthode de purification: Purification par protéine A
Taille: 150ul, Concentration: 3000 µg/ml by Nanodrop and 1027 µg/ml by Bradford method using BSA as the standard;	Identification du gène (NCBI): 2886	Dilutions recommandées: WB 1:500-1:2000 IP 0.5-4.0 ug for IP and 1:500-1:1000 for WB IHC 1:50-1:500 IF 1:10-1:100
Hôte: Lapin	Nom complet: growth factor receptor-bound protein 7	
Isotype: IgG	MW calculé: 532 aa, 60 kDa	
Immunogen Catalog Number: AG0023	MW observés: 60-70 kDa	

Applications

Applications testées: IF, IHC, IP, WB, ELISA	Contrôles positifs: WB : cellules A431, cellules HEK-293 IP : cellules A431, IHC : tissu de cancer du côlon humain, IF : cellules A431,
Demandes citées: IHC, WB	
Spécificité de l'espèce: Humain, souris	
Espèces citées: Humain, souris	

Remarque-IHC: il est suggéré de démasquer l'antigène avec un tampon de TE buffer pH 9,0; (*) A défaut, 'le démasquage de l'antigène peut être 'effectué avec un tampon citrate pH 6,0.

Informations générales

Grb7 belongs to a family of adapter proteins. This family, including Grb10, Grb7 and Grb 14, contains a proline-rich, a RA, a PH, a BPS and SH2 domain. Grb7 associate with a number of receptors including EGFR and FAK. Functions of Grb7 include mobility because it associates receptors such FAK, and direct evidence from overexpression of this proteins. This antibody recognize the N-terminal of GRB7.

Publications notables

Autrice	Pubmed ID	Journal	Application
Qiong Xu	34783299	Bioengineered	WB,IHC
Mu-Xin Zhang	36699092	Front Pharmacol	WB

Stockage

Stockage:
Stocker à -20°C. Stable pendant un an après l'expédition.
Tampon de stockage:
PBS avec azoture de sodium à 0,02 % et glycérol à 50 % pH 7,3
L'aliquotage n'est pas nécessaire pour le stockage à -20C

*** Les 20ul contiennent 0,1% de BSA.

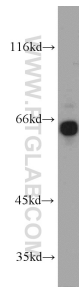
For technical support and original validation data for this product please contact:

T: 1 (888) 4PTGLAB (1-888-478-4522) (toll free in USA), or 1(312) 455-8498 (outside USA)

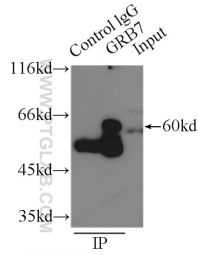
E: proteintech@ptglab.com
W: ptglab.com

This product is exclusively available under Proteintech Group brand and is not available to purchase from any other manufacturer.

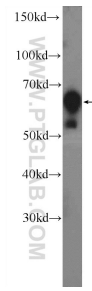
Données de validation sélectionnées



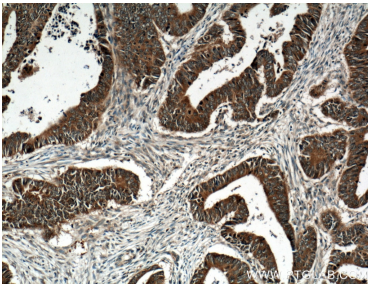
A431 cells were subjected to SDS PAGE followed by western blot with 10045-1-Ig (GRB7 antibody) at dilution of 1:1000 incubated at room temperature for 1.5 hours.



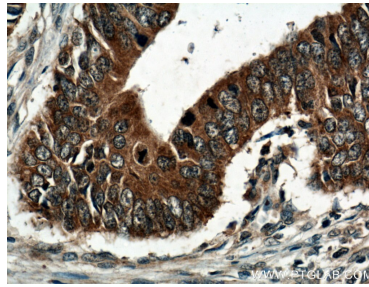
IP Result of anti-GRB7 (IP:10045-1-Ig, 3ug; Detection:10045-1-Ig 1:500) with A431 cells lysate 3300ug.



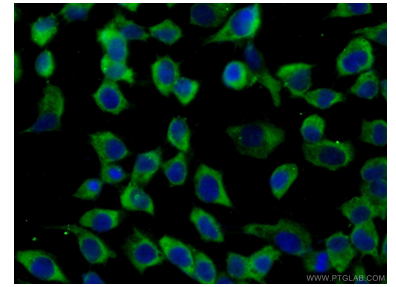
HEK-293 cells were subjected to SDS PAGE followed by western blot with 10045-1-Ig (GRB7 Antibody) at dilution of 1:1000 incubated at room temperature for 1.5 hours.



Immunohistochemical analysis of paraffin-embedded human colon cancer tissue slide using 10045-1-Ig (GRB7 Antibody) at dilution of 1:200 (under 10x lens). Heat mediated antigen retrieval with Tris-EDTA buffer (pH 9.0).



Immunohistochemical analysis of paraffin-embedded human colon cancer tissue slide using 10045-1-Ig (GRB7 Antibody) at dilution of 1:200 (under 40x lens). Heat mediated antigen retrieval with Tris-EDTA buffer (pH 9.0).



Immunofluorescent analysis of (-20°C Ethanol) fixed A431 cells using 10045-1-Ig(GRB7 antibody) at dilution of 1:25 and Alexa Fluor 488-conjugated AffiniPure Goat Anti-Rabbit IgG(H+L).