

À des fins de recherche uniquement

Anticorps Polyclonal de lapin anti-PTEN



Numéro de catalogue: 10047-1-AP

Phare

9 Publications

Informations de base

Numéro de catalogue:

10047-1-AP

Taille:

150ul, Concentration: 300 µg/ml by Nanodrop and 133 µg/ml by Bradford method using BSA as the standard;

Hôte:

Lapin

Isotype:

IgG

Immunogen Catalog Number:

AG0007

Numéro d'acquisition GenBank:

BC005821

Identification du gène (NCBI):

5728

Nom complet:

phosphatase and tensin homolog

MW calculé

47 kDa

MW observés:

55 kDa

Méthode de purification:

Purification par affinité contre l'antigène

Dilutions recommandées:

WB 1:500-1:1000

IP 0.5-4.0 ug for IP and 1:1000-1:6000 for WB

IHC 1:50-1:500

Applications

Applications testées:

IHC, IP, WB, ELISA

Demandes citées:

IF, IHC, WB

Spécificité de l'espèce:

Humain, souris

Espèces citées:

Humain, rat, souris

Remarque-IHC: il est suggéré de démasquer l'antigène avec un tampon de TE buffer pH 9,0; (*) A défaut, 'le démasquage de l'antigène peut être 'effectué avec un tampon citrate pH 6,0.

Contrôles positifs:

WB : cellules MCF-7, cellules DU 145, cellules HeLa

IP : cellules HEK-293T,

IHC : tissu de cancer du sein humain,

Informations générales

PTEN (also designated MMAC1), products of tumor suppressor genes, are found deleted in most human gliomas. The PTEN genes are also mutated in many other tumors, such as brain, breast, kidney and prostate cancers. PTEN is a protein tyrosine phosphatase that may terminate the signaling transduction pathways mediated by PI 3-kinase/Akt. PTEN has an apparent molecular weight of 55 kDa and it is located in the cytosol.

Publications notables

Autrice	Pubmed ID	Journal	Application
Tao Zeng	28987868	Redox Biol	WB
Tiantian Qiu	36139584	Cancers (Basel)	WB,IHC
DongHua Hou	36285295	Oxid Med Cell Longev	WB,IHC,IF

Stockage

Stockage:

Stocker à -20°C. Stable pendant un an après l'expédition.

Tampon de stockage:

PBS avec azoture de sodium à 0,02 % et glycérol à 50 % pH 7,3

L'aliquotage n'est pas nécessaire pour le stockage à -20C

*** Les 20ul contiennent 0,1% de BSA.

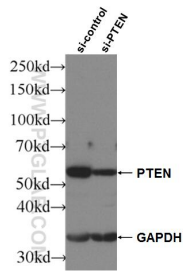
For technical support and original validation data for this product please contact:

T: 1 (888) 4PTGLAB (1-888-478-4522) (toll free in USA), or 1(312) 455-8498 (outside USA)

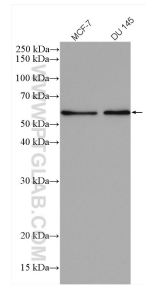
E: proteintech@ptglab.com
W: ptglab.com

This product is exclusively available under Proteintech Group brand and is not available to purchase from any other manufacturer.

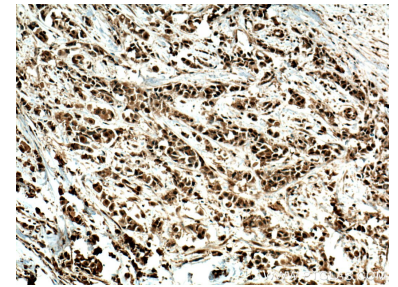
Données de validation sélectionnées



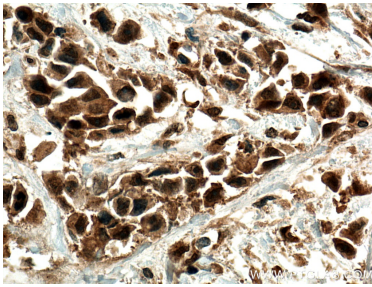
WB result of PTEN antibody (10047-1-AP; 1:3000; incubated at room temperature for 1.5 hours) with sh-Control and sh-PTEN transfected HeLa cells.



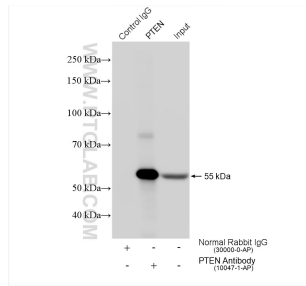
Various lysates were subjected to SDS PAGE followed by western blot with 10047-1-AP (PTEN antibody) at dilution of 1:500 incubated at room temperature for 1.5 hours.



Immunohistochemical analysis of paraffin-embedded human breast cancer tissue slide using 10047-1-AP (PTEN antibody) at dilution of 1:200 (under 10x lens). Heat mediated antigen retrieval with Tris-EDTA buffer (pH 9.0).



Immunohistochemical analysis of paraffin-embedded human breast cancer tissue slide using 10047-1-AP (PTEN antibody) at dilution of 1:200 (under 40x lens). Heat mediated antigen retrieval with Tris-EDTA buffer (pH 9.0).



IP result of anti-PTEN (IP:10047-1-AP, 4ug; Detection:10047-1-AP 1:3000) with HEK-293T cells lysate 2040 ug.