

À des fins de recherche uniquement

Anticorps Polyclonal de lapin anti-RB1



Numéro de catalogue: 10048-2-Ig

Phare

52 Publications

Informations de base

Numéro de catalogue:	10048-2-Ig	Numéro d'acquisition GenBank:	BC040540	Méthode de purification:	Purification par protéine A
Taille:	150ul, Concentration: 1200 µg/ml by Nanodrop;	Identification du gène (NCBI):	5925	Dilutions recommandées:	WB 1:5000-1:50000 IP 0.5-4.0 ug for IP and 1:500-1:1000 for WB
Hôte:	Lapin	Nom complet:	retinoblastoma 1		
Isotype:	IgG	MW calculé:	110 kDa		
Immunogen Catalog Number:	AG0006	MW observés:	110 kDa		

Applications

Applications testées:

IP, WB, ELISA

Demandes citées:

CoIP, IF, IHC, WB

Spécificité de l'espèce:

Humain

Espèces citées:

Humain, poisson-zèbre

Contrôles positifs:

WB : cellules A431, cellules Jurkat traitées à la calyculine A, cellules MCF-7

IP : cellules A431,

Informations générales

RB1, also named as pp110, pRb and p105 Rb, belongs to the retinoblastoma protein (RB) family. It is a key regulator of entry into cell division that acts as a tumor suppressor. RB1 acts as a transcription repressor of E2F1 target genes. The underphosphorylated, active form of RB1 interacts with E2F1 and represses its transcription activity, leading to cell cycle arrest. It is directly involved in heterochromatin formation by maintaining overall chromatin structure and, in particular, that of constitutive heterochromatin by stabilizing histone methylation. It recruits and targets histone methyltransferases SUV39H1, SUV420H1 and SUV420H2, leading to epigenetic transcriptional repression. RB1 controls histone H4 'Lys-20' trimethylation and inhibits the intrinsic kinase activity of TAF1. It mediates transcriptional repression by SMARCA4/BRG1 by recruiting a histone deacetylase (HDAC) complex to the c-FOS promoter. In resting neurons, transcription of the c-FOS promoter is inhibited by BRG1-dependent recruitment of a phospho-RB1-HDAC1 repressor complex. Upon calcium influx, RB1 is dephosphorylated by calcineurin, which leads to release of the repressor complex. In case of viral infections, interactions with SV40 large T antigen, HPV E7 protein or adenovirus E1A protein induce the disassembly of RB1-E2F1 complex thereby disrupting RB1's activity. This antibody is a rabbit polyclonal antibody raised against human RB1 fusion protein.

Publications notables

Autrice	Pubmed ID	Journal	Application
Qinghua Wang	29033588	Onco Targets Ther	WB
Shuai Huang	31660066	Theranostics	WB
Chao Zhang	36093042	iScience	WB, CoIP

Stockage

Stockage:

Stocker à -20°C. Stable pendant un an après l'expédition.

Tampon de stockage:

PBS avec azoture de sodium à 0,02 % et glycérol à 50 % pH 7,3

L'aliquotage n'est pas nécessaire pour le stockage à -20C

*** Les 20ul contiennent 0,1% de BSA.

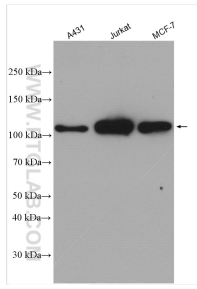
For technical support and original validation data for this product please contact:

T: 1 (888) 4PTGLAB (1-888-478-4522) (toll free in USA), or 1(312) 455-8498 (outside USA)

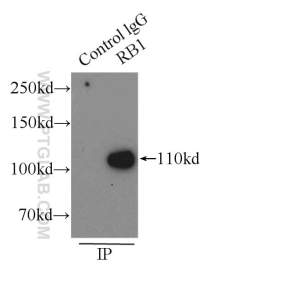
E: proteintech@ptglab.com
W: ptglab.com

This product is exclusively available under Proteintech Group brand and is not available to purchase from any other manufacturer.

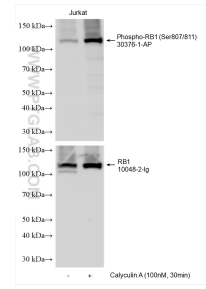
Données de validation sélectionnées



A431 cells were subjected to SDS PAGE followed by western blot with 10048-2-Ig (RB1 antibody) at dilution of 1:10000 incubated at room temperature for 1.5 hours.



IP result of anti-RB1 (IP:10048-2-Ig, 3ug; Detection:10048-2-Ig 1:500) with A431 cells lysate 3000 ug.



Non-treated and Calyculin A treated Jurkat cells were subjected to SDS PAGE followed by western blot with 30376-1-AP (Phospho-RB1 (Ser807/811) antibody) at dilution of 1:5000 incubated at room temperature for 1.5 hours. The membrane was stripped and re-blotted with RB1 antibody (10048-2-Ig) subsequently.