

À des fins de recherche uniquement

Anticorps Polyclonal de lapin anti-SHC



Numéro de catalogue: 10054-1-AP

Phare

10 Publications

Informations de base

Numéro de catalogue: 10054-1-AP	Numéro d'acquisition GenBank: NM_183001	Méthode de purification: Purification par affinité contre l'antigène
Taille: 150ul, Concentration: 800 µg/ml by Nanodrop and 307 µg/ml by Bradford method using BSA as the standard;	Identification du gène (NCBI): 6464	Dilutions recommandées: WB 1:1000-1:4000 IHC 1:50-1:500 IF 1:50-1:500
Hôte: Lapin	Nom complet: SHC (Src homology 2 domain containing) transforming protein 1	
Isotype: IgG	MW calculé: 63 kDa	
Immunogen Catalog Number: AG0103	MW observés: 66 kDa	

Applications

Applications testées:

IF, IHC, WB, ELISA

Demandes citées:

IF, WB

Spécificité de l'espèce:

Humain, rat, souris

Espèces citées:

Humain, rat, souris

Remarque-IHC: il est suggéré de démasquer l'antigène avec un tampon de TE buffer pH 9,0; (*) A défaut, 'le démasquage de l'antigène peut être 'effectué avec un tampon citrate pH 6,0.

Contrôles positifs:

WB : cellules C6, cellules A431, cellules HeLa, cellules HUVEC, cellules U2OS, tissu cutané de souris

IHC : tissu de cancer du côlon humain,

IF : cellules HeLa,

Informations générales

The proto-oncogene SHC family consists of SHCA, SHCB, SHCC, and SHCD4 gene members, which can encode 7 kinds of cohesive molecules. SHC family is widely expressed and functional. The SHC1 gene is located in zone 1, region 2 of human chromosome 1. SHC1 is believed to be involved in inhibiting neuronal apoptosis and regulating the receptor tyrosine kinase pathway. SHC1 sensitizes cancer cells to the 8-Cl-cAMP treatment.

Publications notables

Autrice	Pubmed ID	Journal	Application
Xiaohui Zhou	32935825	Clinics (Sao Paulo)	WB
Jie Zhou	35765036	Stem Cell Res Ther	WB
Rong Fu	31428222	Oxid Med Cell Longev	IF

Stockage

Stockage:

Stocker à -20°C. Stable pendant un an après l'expédition.

Tampon de stockage:

PBS avec azoture de sodium à 0,02 % et glycérol à 50 % pH 7,3

L'aliquotage n'est pas nécessaire pour le stockage à -20C

*** Les 20ul contiennent 0,1% de BSA.

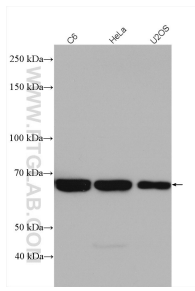
For technical support and original validation data for this product please contact:

T: 1 (888) 4PTGLAB (1-888-478-4522) (toll free in USA), or 1(312) 455-8498 (outside USA)

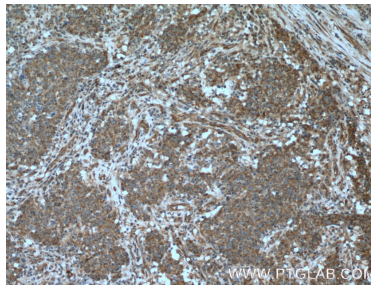
E: proteintech@ptglab.com
W: ptglab.com

This product is exclusively available under Proteintech Group brand and is not available to purchase from any other manufacturer.

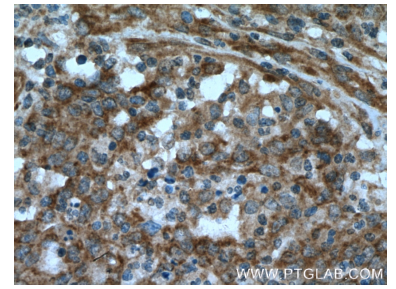
Données de validation sélectionnées



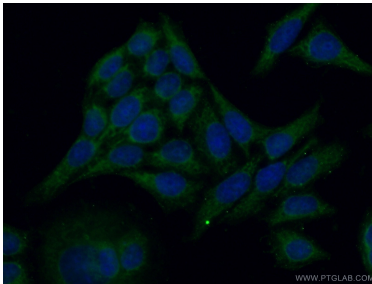
Various lysates were subjected to SDS PAGE followed by western blot with 10054-1-AP (SHC antibody) at dilution of 1:2000 incubated at room temperature for 1.5 hours.



Immunohistochemical analysis of paraffin-embedded human colon cancer tissue slide using 10054-1-AP (SHC antibody at dilution of 1:200 (under 10x lens).



Immunohistochemical analysis of paraffin-embedded human colon cancer tissue slide using 10054-1-AP (SHC antibody at dilution of 1:200 (under 40x lens).



Immunofluorescent analysis of (-20°C Ethanol) fixed HeLa cells using 10054-1-AP (SHC antibody) at dilution of 1:50 and Alexa Fluor 488-conjugated AffiniPure Goat Anti-Rabbit IgG(H+L).