

À des fins de recherche uniquement

Anticorps Polyclonal de lapin anti-SNAPIN



Numéro de catalogue: 10055-1-AP

13 Publications

Informations de base

Numéro de catalogue:
10055-1-AP

Taille:
150ul, Concentration: 400 µg/ml by Nanodrop and 353 µg/ml by Bradford method using BSA as the standard;

Hôte:
Lapin

Isotype:
IgG

Immunogen Catalog Number:
AG0101

Numéro d'acquisition GenBank:
BC000761

Identification du gène (NCBI):
23557

Nom complet:
SNAP-associated protein

MW calculé
15 kDa

MW observés:
15-18 kDa

Méthode de purification:
Purification par affinité contre l'antigène

Dilutions recommandées:
WB 1:200-1:1000
IP 0.5-4.0 ug for IP and 1:200-1:1000 for WB
IHC 1:50-1:500
IF 1:20-1:200

Applications

Applications testées:
FC, IF, IHC, IP, WB, ELISA

Demandes citées:
IF, IHC, WB

Spécificité de l'espèce:
Humain, rat, souris

Espèces citées:
Humain, souris

Remarque-IHC: il est suggéré de démasquer l'antigène avec un tampon de TE buffer pH 9,0; (*) A défaut, 'le démasquage de l'antigène peut être 'effectué avec un tampon citrate pH 6,0.

Contrôles positifs:

WB : cellules A375, cellules HEK-293, tissu cérébral de rat

IP : tissu cérébral de souris,

IHC : tissu testiculaire humain, tissu cérébral humain

IF : cellules HepG2,

Informations générales

Snapin, a protein of relative molecular weight of 15kd, is implicated in neurotransmission by binding to SNAP-25. Snapin was enriched in neurons and exclusively located on synaptic vesicle membrane, which may be a PKA target for modulating transmitter release through the cAMP-dependent signal-transduction pathway. This antibody can recognize the 15-18kd(Monomer) and 30-36kd(Dimer) forms of SNAPIN.

Publications notables

| Autrice | Pubmed ID | Journal | Application |
|-----------------------|-----------|-----------------------------|-------------|
| Przemyslaw A Filipek | 28993467 | J Cell Biol | WB |
| Kelsey Michelle Wells | 35587649 | Elife | WB |
| Mengxue Jiang | 34194388 | Front Endocrinol (Lausanne) | WB, IHC, IF |

Stockage

Stockage:

Stocker à -20°C. Stable pendant un an après l'expédition.

Tampon de stockage:

PBS avec azoture de sodium à 0,02 % et glycérol à 50 % pH 7,3

L'aliquotage n'est pas nécessaire pour le stockage à -20C

*** Les 20ul contiennent 0,1% de BSA.

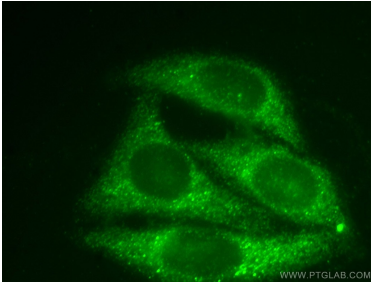
For technical support and original validation data for this product please contact:

T: 1 (888) 4PTGLAB (1-888-478-4522) (toll free in USA), or 1(312) 455-8498 (outside USA)

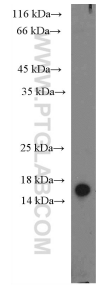
E: proteintech@ptglab.com
W: ptglab.com

This product is exclusively available under Proteintech Group brand and is not available to purchase from any other manufacturer.

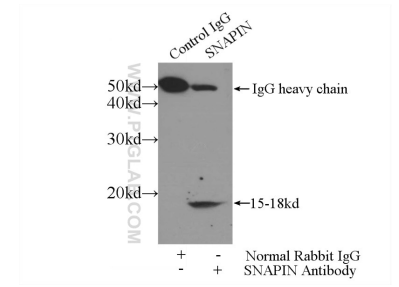
Données de validation sélectionnées



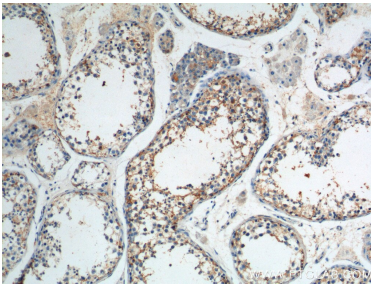
Immunofluorescent analysis of HepG2 cells, using SNAPIN antibody 10055-1-AP at 1:50 dilution and FITC-labeled donkey anti-rabbit IgG (green).



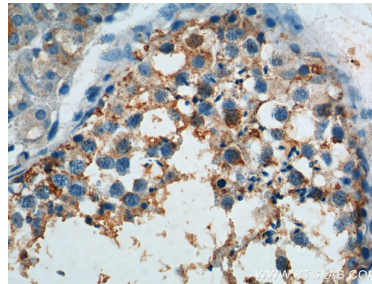
A375 cells were subjected to SDS PAGE followed by western blot with 10055-1-AP (SNAPIN Antibody) at dilution of 1:300 incubated at room temperature for 1.5 hours.



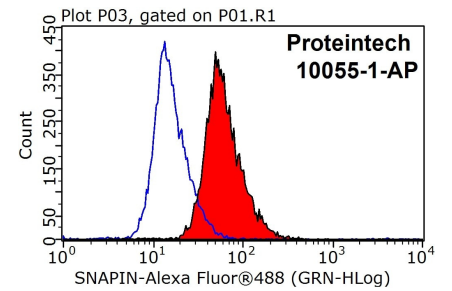
IP Result of anti-SNAPIN (IP:10055-1-AP, 5ug; Detection:10055-1-AP 1:300) with mouse brain tissue lysate 4000ug.



Immunohistochemical analysis of paraffin-embedded human testis tissue slide using 10055-1-AP (SNAPIN Antibody) at dilution of 1:200 (under 10x lens).



Immunohistochemical analysis of paraffin-embedded human testis tissue slide using 10055-1-AP (SNAPIN Antibody) at dilution of 1:200 (under 40x lens).



1×10^6 HepG2 cells were stained with 0.2ug SNAPIN antibody (10055-1-AP, red) and control antibody (blue). Fixed with 90% MeOH blocked with 3% BSA (30 min). Alexa Fluor 488-conjugated AffiniPure Goat Anti-Rabbit IgG(H+L) with dilution 1:1000.