

À des fins de recherche uniquement

Anticorps Polyclonal de lapin anti-MEF2C



Numéro de catalogue: 10056-1-AP

Phare

37 Publications

Informations de base

Numéro de catalogue:
10056-1-AP

Taille:
150ul, Concentration: 1000 µg/ml by
Nanodrop and 467 µg/ml by Bradford
method using BSA as the standard;

Hôte:
Lapin

Isotype:
IgG

Immunogen Catalog Number:
AG0020

Numéro d'acquisition GenBank:
BC156603

Identification du gène (NCBI):

Nom complet:
myocyte enhancer factor 2C

MW calculé
51 kDa

MW observés:
45-70 kDa

Méthode de purification:
Purification par affinité contre
l'antigène

Dilutions recommandées:
WB 1:500-1:1000
IP 0.5-4.0 ug for IP and 1:500-1:1000
for WB
IHC 1:20-1:200
IF 1:50-1:500

Applications

Applications testées:
FC, IF, IHC, IP, WB, ELISA

Demandes citées:
ChIP, IF, IHC, WB

Spécificité de l'espèce:
Humain, souris

Espèces citées:
bovin, Humain, porc, rat, souris

Remarque-IHC: il est suggéré de démasquer l'antigène avec un tampon de TE buffer pH 9.0; (*) A défaut, 'le démasquage de l'antigène peut être effectué avec un tampon citrate pH 6,0.

Contrôles positifs:

WB : cellules SH-SY5Y, tissu cardiaque de souris, tissu cérébral de souris, tissu de côlon de souris

IP : cellules SH-SY5Y,

IHC : tissu de lymphome humain,

IF : cellules HepG2,

Informations générales

MEF2C belongs to the MEF2 family. It is a transcription activator which binds specifically to the MEF2 element present in the regulatory regions of many muscle-specific genes. MEF2C controls cardiac morphogenesis and myogenesis, and is also involved in vascular development[PMID: 20221419]. It plays an essential role in hippocampal-dependent learning and memory by suppressing the number of excitatory synapses and thus regulating basal and evoked synaptic transmission[PMID:18599438]. It is crucial for normal neuronal development, distribution, and electrical activity in the neocortex and is necessary for proper development of megakaryocytes and platelets and for bone marrow B lymphopoiesis[PMID: 21666133]. This protein is required for B-cell survival and proliferation in response to BCR stimulation, efficient IgG1 antibody responses to T-cell-dependent antigens and for normal induction of germinal center B cells. It may also be involved in neurogenesis and in the development of cortical architecture. MEF2C exists some isoforms with MV 50-52 kDa, 47 kDa, and 45 kDa, but modified MEF2C is about 55-66 kDa.

Publications notables

Autrice	Pubmed ID	Journal	Application
Adrian Fischer	27901111	Sci Rep	WB
Jae-Yeol Joo	26595656	Nat Neurosci	WB
Shichun Tu	29133852	Nat Commun	WB

Stockage

Stockage:

Stocker à -20°C. Stable pendant un an après l'expédition.

Tampon de stockage:

PBS avec azoture de sodium à 0,02 % et glycérol à 50 % pH 7,3

L'aliquotage n'est pas nécessaire pour le stockage à -20C

*** Les 20ul contiennent 0,1% de BSA.

For technical support and original validation data for this product please contact:

T: 1 (888) 4PTGLAB (1-888-478-4522) (toll free in USA), or 1(312) 455-8498 (outside USA)

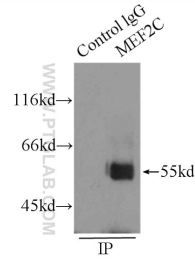
E: proteintech@ptglab.com
W: ptglab.com

This product is exclusively available under Proteintech Group brand and is not available to purchase from any other manufacturer.

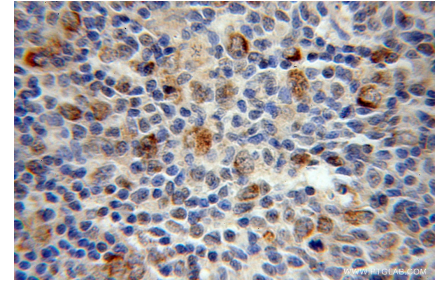
Données de validation sélectionnées



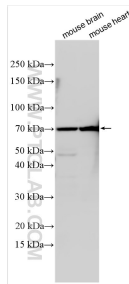
SH-SY5Y cells were subjected to SDS PAGE followed by western blot with 10056-1-AP (MEF2C antibody) at dilution of 1:500 incubated at room temperature for 1.5 hours.



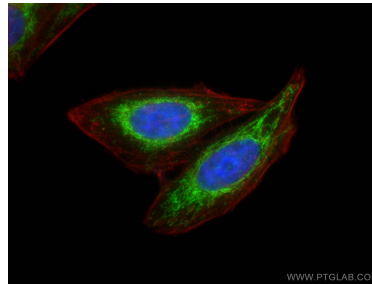
IP Result of anti-MEF2C (IP:10056-1-AP, 3ug; Detection:10056-1-AP 1:500) with SH-SY5Y cells lysate 2000ug.



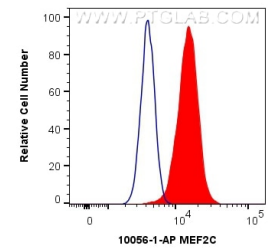
Immunohistochemical analysis of paraffin-embedded human lymphoma using 10056-1-AP (MEF2C antibody) at dilution of 1:50 (under 40x lens).



Various lysates were subjected to SDS PAGE followed by western blot with 10056-1-AP (MEF2C antibody) at dilution of 1:300 incubated at room temperature for 1.5 hours.



Immunofluorescent analysis of (4% PFA) fixed HepG2 cells using MEF2C antibody (10056-1-AP) at dilution of 1:200 and CoraLite@488-Conjugated AffiniPure Goat Anti-Rabbit IgG(H+L), CL594-Phalloidin (red).



1X10⁶ HeLa cells were intracellularly stained with 0.4 ug Anti-Human MEF2C (10056-1-AP) and CoraLite@488-Conjugated AffiniPure Goat Anti-Rabbit IgG(H+L) at dilution 1:1000 (red), or 0.4 ug Isotype Control. Cells were fixed with 4% PFA and permeabilized with Flow Cytometry Perm Buffer (PF00011-C).