

À des fins de recherche uniquement

Anticorps Polyclonal de lapin anti-CSTF1



Numéro de catalogue: 10064-2-AP

4 Publications

Informations de base

Numéro de catalogue:
10064-2-AP

Taille:
150ul, Concentration: 900 µg/ml by Nanodrop and 333 µg/ml by Bradford method using BSA as the standard;

Hôte:
Lapin

Isotype:
IgG

Immunogen Catalog Number:
AG0109

Numéro d'acquisition GenBank:
BC001011

Identification du gène (NCBI):
1477

Nom complet:
cleavage stimulation factor, 3' pre-RNA, subunit 1, 50kDa

MW calculé:
48.3 kDa

MW observés:
50 kDa

Méthode de purification:
Purification par affinité contre l'antigène

Dilutions recommandées:
WB 1:500-1:1000
IP 0.5-4.0 ug for IP and 1:500-1:1000 for WB

Applications

Applications testées:
IP, WB, ELISA

Demandes citées:
WB

Spécificité de l'espèce:
Humain, rat, souris

Espèces citées:
Humain, rat, souris

Contrôles positifs:

WB : cellules HeLa, cellules K-562

IP : cellules NIH/3T3,

Informations générales

Cleavage stimulation factor (CstF), a heterotrimeric protein with subunits of 77, 64, and 50 kD (CstF-77, -64, and -50), is a polyadenylation factor that helps to specify the site of processing. CstF recognizes the G+U-rich element, a sequence located downstream of the cleavage site. CstF-50 subunit interacts with the COOH-terminal domain of the RNAP II largest subunit (CTD). This subunit may be responsible for the interaction of CSTF with other factors to form a stable complex on the pre-mRNA, and multiple WD domains are required for protein interactions.

Publications notables

Autrice	Pubmed ID	Journal	Application
J Dai	26311342	Andrology	
Patricia Uguen	12941705	EMBO J	WB
Ziqian Min	36444304	iScience	

Stockage

Stockage:

Stocker à -20°C. Stable pendant un an après l'expédition.

Tampon de stockage:

PBS avec azoture de sodium à 0,02 % et glycérol à 50 % pH 7,3

L'aliquotage n'est pas nécessaire pour le stockage à -20C

*** Les 20ul contiennent 0,1% de BSA.

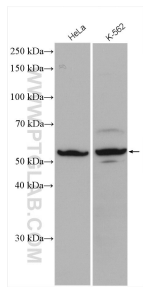
For technical support and original validation data for this product please contact:

T: 1 (888) 4PTGLAB (1-888-478-4522) (toll free in USA), or 1(312) 455-8498 (outside USA)

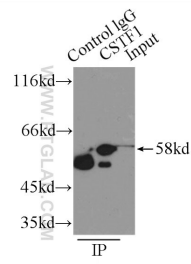
E: proteintech@ptglab.com
W: ptglab.com

This product is exclusively available under Proteintech Group brand and is not available to purchase from any other manufacturer.

Données de validation sélectionnées



Various lysates were subjected to SDS PAGE followed by western blot with 10064-2-AP (CSTF1 antibody) at dilution of 1:500 incubated at room temperature for 1.5 hours.



IP Result of anti-CSTF1 (IP:10064-2-AP, 2ug; Detection:10064-2-AP 1:500) with NIH/3T3 cells lysate 2500ug.