

À des fins de recherche uniquement

Anticorps Polyclonal de lapin anti-HINFP



Numéro de catalogue: 10066-2-AP

Phare

1 Publications

Informations de base

Numéro de catalogue: 10066-2-AP	Numéro d'acquisition GenBank: BC001073	Méthode de purification: Purification par affinité contre l'antigène
Taille: 150ul , Concentration: 450 µg/ml by Nanodrop;	Identification du gène (NCBI): 25988	Dilutions recommandées: WB 1:1000-1:4000 IF 1:10-1:100
Hôte: Lapin	Nom complet: histone H4 transcription factor	
Isotype: IgG	MW calculé 60 kDa	
Immunogen Catalog Number: AG0115	MW observés: 60 kDa	

Applications

Applications testées:

IF, WB, ELISA

Demandes citées:

IF, IHC, WB

Spécificité de l'espèce:

Humain, rat, souris

Espèces citées:

Humain

Contrôles positifs:

WB : cellules HepG2, cellules L02, tissu hépatique de rat, tissu hépatique de souris, tissu hépatique humain

IF : cellules HeLa, cellules L02

Informations générales

Methylation of CpG dinucleotides is the major epigenetic modification in higher eukaryotic genomes. MIZF interacts with MBD2, a methyl-CpG-binding protein playing a critical role in DNA methylation-mediated transcriptional repression. MIZF functions as a negative regulator of transcription by binding to MBD2 and recruiting histone deacetylase (HDAC)-containing complexes. MIZF mRNA is present in various human tissues and cell lines and expressed as a 60kd protein.

Publications notables

Autrice	Pubmed ID	Journal	Application
Xianchong Zheng	35668172	Oncogene	WB,IHC,IF

Stockage

Stockage:

Stocker à -20°C. Stable pendant un an après l'expédition.

Tampon de stockage:

PBS avec azoture de sodium à 0,02 % et glycérol à 50 % pH 7,3

L'aliquotage n'est pas nécessaire pour le stockage à -20C

*** Les 20ul contiennent 0,1% de BSA.

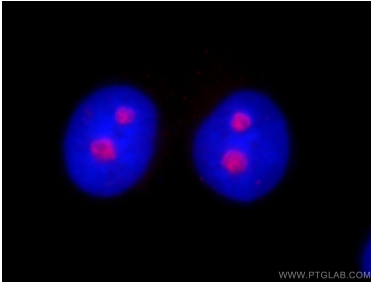
For technical support and original validation data for this product please contact:

T: 1 (888) 4PTGLAB (1-888-478-4522) (toll free in USA), or 1(312) 455-8498 (outside USA)

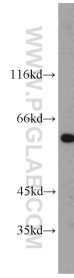
E: proteintech@ptglab.com
W: ptglab.com

This product is exclusively available under Proteintech Group brand and is not available to purchase from any other manufacturer.

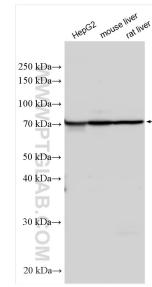
Données de validation sélectionnées



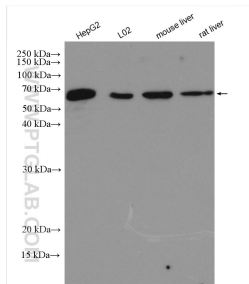
Immunofluorescent analysis of fixed HeLa cells using 10066-2-AP (HINFP antibody) at dilution of 1:25 and Rhodamine-Goat anti-Rabbit IgG.



human liver tissue were subjected to SDS PAGE followed by western blot with 10066-2-AP (HINFP antibody) at dilution of 1:300 incubated at room temperature for 1.5 hours.



Various lysates were subjected to SDS PAGE followed by western blot with 10066-2-AP (HINFP antibody) at dilution of 1:2000 incubated at room temperature for 1.5 hours.



Various lysates were subjected to SDS PAGE followed by western blot with 10066-2-AP (HINFP antibody) at dilution of 1:3000 incubated at room temperature for 1.5 hours.