

À des fins de recherche uniquement

# Anticorps Polyclonal de lapin anti-Beta Tubulin



Numéro de catalogue: 10068-1-AP

278 Publications

## Informations de base

Numéro de catalogue:

10068-1-AP

Taille:

150ul, Concentration: 400 µg/ml by Nanodrop;

Hôte:

Lapin

Isotype:

IgG

Immunogen Catalog Number:

AG0117

Numéro d'acquisition GenBank:

BC000748

Identification du gène (NCBI):

10381

Nom complet:

tubulin, beta 3

MW calculé

450 aa, 50 kDa

MW observés:

50-55 kDa

Méthode de purification:

Purification par affinité contre l'antigène

Dilutions recommandées:

WB 1:500-1:2000

IP 0.5-4.0 ug for IP and 1:2000-1:10000 for WB

IHC 1:20-1:200

IF 1:200-1:800

## Applications

Applications testées:

FC, IF, IHC, IP, WB, ELISA

Demandes citées:

IF, IHC, IP, WB

Spécificité de l'espèce:

Humain, rat, souris

Espèces citées:

bovin, canin, Humain, poisson-zèbre, porc, rat, souris, Caenorhabditis elegans, Ver à soie

**Remarque-IHC: il est suggéré de démasquer l'antigène avec un tampon de TE buffer pH 9,0; (\*) À défaut, 'le démasquage de l'antigène peut être 'effectué avec un tampon citrate pH 6,0.**

Contrôles positifs:

WB : tissu de cerveau de souris, cellules A431, cellules HEK-293, cellules HeLa, cellules HepG2, cellules Jurkat, cellules NIH/3T3, tissu cérébral de rat, tissu cérébral de souris

IP : cellules HEK-293,

IHC : tissu cérébral de souris, tissu cérébral de rat, tissu cérébral humain

IF : cellules C2C12, cellules HepG2

## Informations générales

There are five tubulins in human cells: alpha, beta, gamma, delta, and epsilon. Tubulins are conserved across species. They form heterodimers, which multimerize to form a microtubule filament. An alpha and beta tubulin heterodimer is the basic structural unit of microtubules. The heterodimer does not come apart, once formed. The alpha and beta tubulins, which are each about 55 kDa MW, are homologous but not identical. Alpha, beta, and gamma tubulins have all been used as loading controls. Tubulin expression may vary according to resistance to antimicrobial and antimetabolic drugs.

## Publications notables

Autrice	Pubmed ID	Journal	Application
Xiaodong Lan	26417862	Microsc Microanal	WB
Zhongming Li	36164968	Clin Exp Pharmacol Physiol	WB
YanHua Fan	36174847	Fitoterapia	WB

## Stockage

Stockage:

Stocker à -20°C. Stable pendant un an après l'expédition.

Tampon de stockage:

PBS avec azoture de sodium à 0,02 % et glycérol à 50 % pH 7,3

L'aliquotage n'est pas nécessaire pour le stockage à -20C

\*\*\* Les 20ul contiennent 0,1% de BSA.

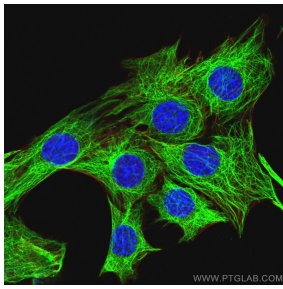
For technical support and original validation data for this product please contact:

T: 1 (888) 4PTGLAB (1-888-478-4522) (toll free in USA), or 1(312) 455-8498 (outside USA)

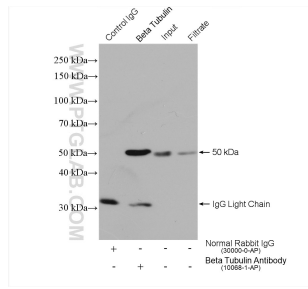
E: proteintech@ptglab.com  
W: ptglab.com

This product is exclusively available under Proteintech Group brand and is not available to purchase from any other manufacturer.

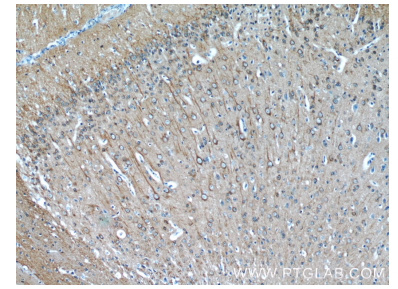
## Données de validation sélectionnées



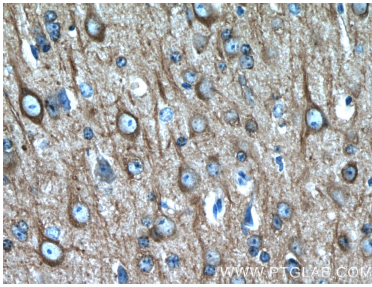
Immunofluorescent analysis of (4% PFA) fixed C2C12 cells using Beta Tubulin antibody (10068-1-AP) at dilution of 1:400 and CoraLite®488-Conjugated AffiniPure Goat Anti-Rabbit IgG(H+L), CL594-Phalloidin (red).



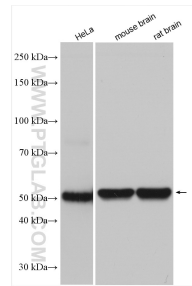
IP result of anti-beta Tubulin (IP:10068-1-AP, 4ug; Detection:10068-1-AP 1:5000) with HEK-293 cells lysate 2320 ug.



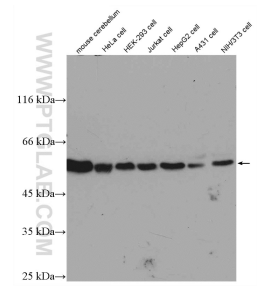
Immunohistochemical analysis of paraffin-embedded mouse brain tissue slide using 10068-1-AP (beta Tubulin antibody at dilution of 1:50 (under 10x lens).



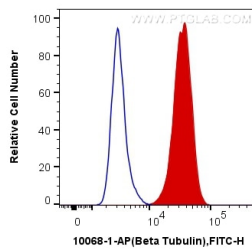
Immunohistochemical analysis of paraffin-embedded mouse brain tissue slide using 10068-1-AP (beta Tubulin antibody at dilution of 1:50 (under 40x lens).



Various lysates were subjected to SDS PAGE followed by western blot with 10068-1-AP (Beta Tubulin antibody) at dilution of 1:8000 incubated at room temperature for 1.5 hours.



Various lysates were subjected to SDS PAGE followed by western blot with 10068-1-AP (beta Tubulin antibody) at dilution of 1:1000 incubated at room temperature for 1.5 hours.



1X10<sup>6</sup> HeLa cells were intracellularly stained with 0.4 ug Anti-Human Beta Tubulin (10068-1-AP) and CoraLite®488-Conjugated AffiniPure Goat Anti-Rabbit IgG(H+L) at dilution 1:1000 (red), or 0.4 ug Control Antibody. Cells were fixed with 4% PFA and permeabilized with Flow Cytometry Perm Buffer (PF00011-C).