

À des fins de recherche uniquement

Anticorps Polyclonal de lapin anti-RB1CC1



Numéro de catalogue: 10069-1-AP

Phare

2 Publications

Informations de base

Numéro de catalogue:

10069-1-AP

Taille:

150ul, Concentration: 600 µg/ml by Nanodrop and by Bradford method using BSA as the standard;

Hôte:

Lapin

Isotype:

IgG

Immunogen Catalog Number:

AG0003

Numéro d'acquisition GenBank:

BC017556

Identification du gène (NCBI):

9821

Nom complet:

RB1-inducible coiled-coil 1

MW calculé

1594 aa, 183 kDa

MW observés:

183 kDa

Méthode de purification:

Purification par affinité contre l'antigène

Dilutions recommandées:

WB 1:500-1:2000

IHC 1:20-1:200

IF 1:10-1:100

Applications

Applications testées:

IF, IHC, WB, ELISA

Demandes citées:

IF, WB

Spécificité de l'espèce:

Humain, souris

Espèces citées:

Humain

Remarque-IHC: il est suggéré de démasquer l'antigène avec un tampon de TE buffer pH 9,0; (*) A défaut, 'le démasquage de l'antigène peut être 'effectué avec un tampon citrate pH 6,0.

Contrôles positifs:

WB : cellules MCF7, cellules HEK-293, cellules HeLa, cellules NIH/3T3, tissu de muscle squelettique de souris

IHC : tissu de cancer du sein humain, tissu rénal humain

IF : cellules HeLa,

Informations générales

RB1CC1, also named as RBICC, is implicated in the regulation of RB1 expression and functions as a DNA-binding transcription factor. It is a potent regulator of the RB1 pathway and a mediator that plays a crucial role in muscular differentiation. Its expression is, thus, a prerequisite for myogenic differentiation. Involved in autophagy. RB1CC1 is required for autophagosome formation. It is probably involved in the tumorigenesis of breast cancer. RB1CC1 is frequently mutated in breast cancer and shows characteristics of a classical tumor suppressor gene. This antibody is a rabbit polyclonal antibody raised against residues near the C terminus of human RB1CC1.

Publications notables

Autrice	Pubmed ID	Journal	Application
Donghoon Lee	35704754	Proc Natl Acad Sci U S A	WB
Claudia Puri	29634932	Dev Cell	IF

Stockage

Stockage:

Stocker à -20°C. Stable pendant un an après l'expédition.

Tampon de stockage:

PBS avec azoture de sodium à 0,02 % et glycérol à 50 % pH 7,3

L'aliquotage n'est pas nécessaire pour le stockage à -20C

*** Les 20ul contiennent 0,1% de BSA.

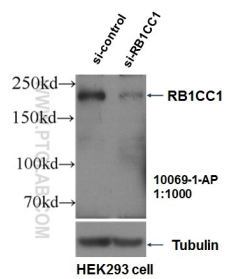
For technical support and original validation data for this product please contact:

T: 1 (888) 4PTGLAB (1-888-478-4522) (toll free in USA), or 1(312) 455-8498 (outside USA)

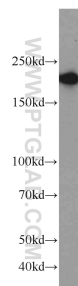
E: proteintech@ptglab.com
W: ptglab.com

This product is exclusively available under Proteintech Group brand and is not available to purchase from any other manufacturer.

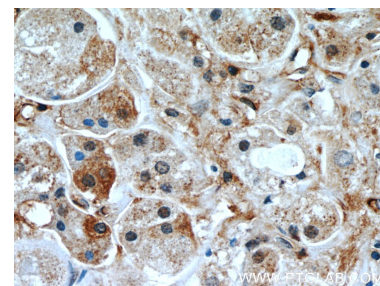
Données de validation sélectionnées



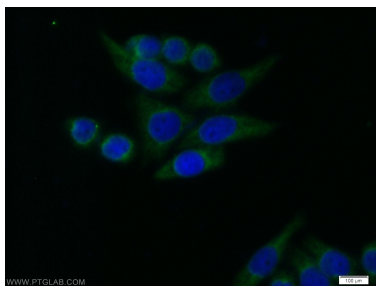
WB result of RB1CC1 antibody (10069-1-AP, 1:1000) with si-Control and si-RB1CC1 transfected HEK293 cells.



MCF7 cells were subjected to SDS PAGE followed by western blot with 10069-1-AP (RB1CC1 antibody) at dilution of 1:1000 incubated at room temperature for 1.5 hours.



Immunohistochemical analysis of paraffin-embedded human breast cancer slide using 10069-1-AP (RB1CC1 Antibody) at dilution of 1:50.



Immunofluorescent analysis of HeLa cells using 10069-1-AP (RB1CC1 antibody) at dilution of 1:25 and Alexa Fluor 488-conjugated AffiniPure Goat Anti-Rabbit IgG(H+L).