

À des fins de recherche uniquement

Anticorps Polyclonal de lapin anti-Recoverin



Numéro de catalogue: 10073-1-AP

14 Publications

Informations de base

Numéro de catalogue: 10073-1-AP	Numéro d'acquisition GenBank: BC001720	Méthode de purification: Purification par affinité contre l'antigène
Taille: 150ul, Concentration: 700 µg/ml by Nanodrop;	Identification du gène (NCBI): 5957	Dilutions recommandées: WB 1:500-1:1000 IF 1:10-1:100
Hôte: Lapin	Nom complet: recoverin	
Isotype: IgG	MW calculé: 24 kDa	
Immunogen Catalog Number: AG0119	MW observés: 23 kDa	

Applications

Applications testées: IF, WB, ELISA	Contrôles positifs: WB : tissu oculaire de souris, cellules Y79, tissu oculaire de rat, tissu rétinien de rat IF : cellules Y79,
Demandes citées: IF, IHC, WB	
Spécificité de l'espèce: Humain, rat, souris	
Espèces citées: Humain, rat, souris	

Informations générales

Recoverin, belonging to a family of the neuronal calcium sensor (NCS) proteins, has a restricted expression in retinal photoreceptors or neurons or neuroendocrine cells. It has been suggested to play a role in light and dark adaptation by regulating rhodopsin phosphorylation. Recently, it has been found that autoantibodies against recoverin (24 kDa) have been strongly associated with cancer-associated retinopathy (CAR) syndrome, a paraneoplastic disease of the retina. But functions of recoverin in cancer cells remain unknown.

Publications notables

Autrice	Pubmed ID	Journal	Application
Kenichi Makabe	32895435	Sci Rep	IF
Jie Zhang	34805789	iScience	WB
Keller Rachel L R L	16634935	Vet Ophthalmol	WB

Stockage

Stockage:
Stocker à -20°C. Stable pendant un an après l'expédition.
Tampon de stockage:
PBS avec azoture de sodium à 0,02 % et glycérol à 50 % pH 7,3
L'aliqotage n'est pas nécessaire pour le stockage à -20C

*** Les 20ul contiennent 0,1% de BSA.

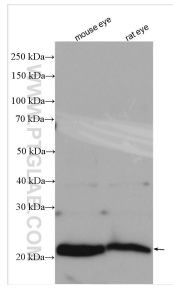
For technical support and original validation data for this product please contact:

T: 1 (888) 4PTGLAB (1-888-478-4522) (toll free in USA), or 1(312) 455-8498 (outside USA)

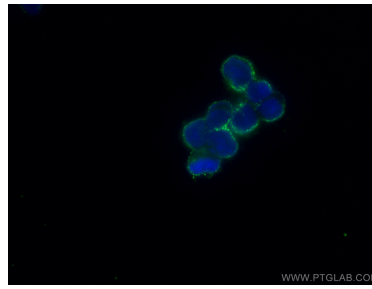
E: proteintech@ptglab.com
W: ptglab.com

This product is exclusively available under Proteintech Group brand and is not available to purchase from any other manufacturer.

Données de validation sélectionnées



Various lysates were subjected to SDS PAGE followed by western blot with 10073-1-AP (Recoverin antibody) at dilution of 1:800 incubated at room temperature for 1.5 hours.



Immunofluorescent analysis of (4% PFA) fixed Y79 cells using Recoverin antibody (10073-1-AP) at dilution of 1:20 and CoraLite®488-Conjugated AffiniPure Goat Anti-Rabbit IgG(H+L).