

À des fins de recherche uniquement

Anticorps Polyclonal de lapin anti-Importin Beta



Numéro de catalogue: 10077-1-AP

Phare

9 Publications

Informations de base

Numéro de catalogue:

10077-1-AP

Taille:

150ul, Concentration: 300 µg/ml by Nanodrop and 150 µg/ml by Bradford method using BSA as the standard;

Hôte:

Lapin

Isotype:

IgG

Immunogen Catalog Number:

AG0122

Numéro d'acquisition GenBank:

BC003572

Identification du gène (NCBI):

3837

Nom complet:

karyopherin (importin) beta 1

MW calculé

97 kDa

MW observés:

90-97 kDa

Méthode de purification:

Purification par affinité contre l'antigène

Dilutions recommandées:

WB 1:500-1:3000

IHC 1:20-1:200

IF 1:50-1:500

Applications

Applications testées:

FC, IF, IHC, WB, ELISA

Demandes citées:

IHC, IP, WB

Spécificité de l'espèce:

Humain, rat, souris

Espèces citées:

Humain, souris

Remarque-IHC: il est suggéré de démasquer l'antigène avec un tampon de TE buffer pH 9,0; (*) A défaut, 'le démasquage de l'antigène peut être 'effectué avec un tampon citrate pH 6,0.

Contrôles positifs:

WB : cellules A2780, cellules C6, cellules HeLa, cellules HT-1080, cellules NIH/3T3, cellules PC-12, tissu cérébral de rat, tissu cérébral de souris

IHC : tissu de cancer du côlon humain,

IF : cellules HeLa,

Informations générales

Importin beta1, also known karyopherin beta or KPNB1, is a nuclear transport receptor that plays a key role in the nuclear import process. Importin beta1 and importin alpha work in concert to transport cargo into the nucleus, functioning as an essential component of the classical nuclear localization signal (NLS) pathway. Elevated expression of importin beta1 has been found in cervical tumors. (22125623)

Publications notables

Autrice	Pubmed ID	Journal	Application
Zongfu Pan	36192735	Mol Cancer	WB
Hongmin Yao	36300763	Autophagy	WB,IHC
Anna Nakanishi	36366568	Viruses	WB

Stockage

Stockage:

Stocker à -20°C. Stable pendant un an après l'expédition.

Tampon de stockage:

PBS avec azoture de sodium à 0,02 % et glycérol à 50 % pH 7,3

L'aliquotage n'est pas nécessaire pour le stockage à -20C

***** Les 20ul contiennent 0,1% de BSA.**

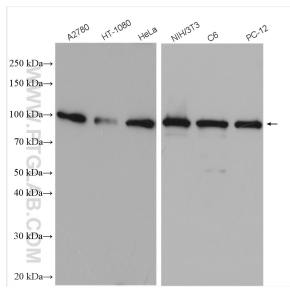
For technical support and original validation data for this product please contact:

T: 1 (888) 4PTGLAB (1-888-478-4522) (toll free in USA), or 1(312) 455-8498 (outside USA)

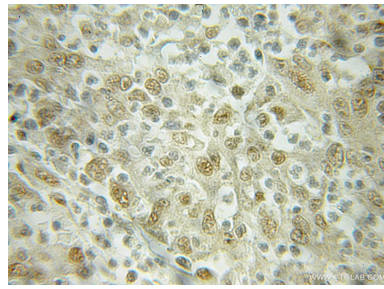
E: proteintech@ptglab.com
W: ptglab.com

This product is exclusively available under Proteintech Group brand and is not available to purchase from any other manufacturer.

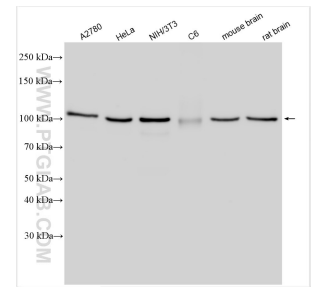
Données de validation sélectionnées



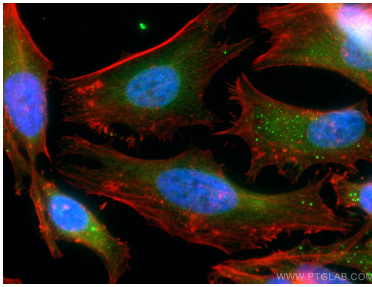
Various lysates were subjected to SDS PAGE followed by western blot with 10077-1-AP (Importin beta antibody) at dilution of 1:1500 incubated at room temperature for 1.5 hours.



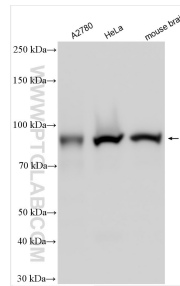
Immunohistochemical analysis of paraffin-embedded human colon cancer using 10077-1-AP (Importin beta antibody) at dilution of 1:50 (under 10x lens).



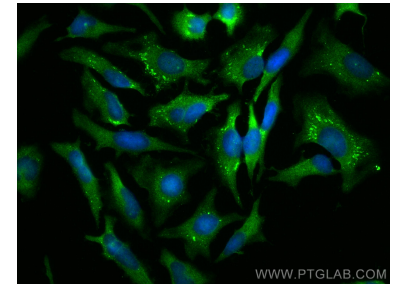
Various lysates were subjected to SDS PAGE followed by western blot with 10077-1-AP (Importin Beta antibody) at dilution of 1:2000 incubated at room temperature for 1.5 hours.



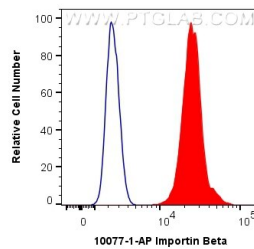
Immunofluorescent analysis of (4% PFA) fixed HeLa cells using Importin Beta antibody (10077-1-AP) at dilution of 1:200 and CoraLite®488-Conjugated AffiniPure Goat Anti-Rabbit IgG(H+L), CL594-Phalloidin (red).



Various lysates were subjected to SDS PAGE followed by western blot with 10077-1-AP (Importin Beta antibody) at dilution of 1:3000 incubated at room temperature for 1.5 hours.



Immunofluorescent analysis of (-20°C Methanol) fixed HeLa cells using Importin Beta antibody (10077-1-AP) at dilution of 1:400 and CoraLite®488-Conjugated AffiniPure Goat Anti-Rabbit IgG(H+L).



1x10⁶ Jurkat cells were intracellularly stained with 0.4 ug Anti-Human Importin Beta (10077-1-AP) and CoraLite®488-Conjugated AffiniPure Goat Anti-Rabbit IgG(H+L) at dilution 1:1000 (red), or 0.4 ug Isotype Control. Cells were fixed with 4% PFA and permeabilized with Flow Cytometry Perm Buffer (PF00011-C).