

À des fins de recherche uniquement

Anticorps Polyclonal de lapin anti-PKM



Numéro de catalogue: 10078-2-AP

Phare

13 Publications

Informations de base

Numéro de catalogue:

10078-2-AP

Taille:

150ul, Concentration: 300 µg/ml by Nanodrop and 140 µg/ml by Bradford method using BSA as the standard;

Hôte:

Lapin

Isotype:

IgG

Immunogen Catalog Number:

AG0110

Numéro d'acquisition GenBank:

BC000481

Identification du gène (NCBI):

5315

Nom complet:

PKM pyruvate kinase, muscle

MW calculé

58 kDa

MW observés:

58 kDa

Méthode de purification:

Purification par affinité contre l'antigène

Dilutions recommandées:

WB 1:1000-1:4000

IHC 1:250-1:1000

IF 1:200-1:800

Applications

Applications testées:

IF, IHC, WB, ELISA

Demandes citées:

IF, IHC, WB

Spécificité de l'espèce:

Humain, rat, souris

Espèces citées:

Humain, porc, rat, souris

Remarque-IHC: il est suggéré de démasquer l'antigène avec un tampon de TE buffer pH 9,0; (*) A défaut, 'le démasquage de l'antigène peut être 'effectué avec un tampon citrate pH 6,0.

Contrôles positifs:

WB : cellules HeLa, cellules HEK-293, cellules HepG2, cellules Jurkat, cellules MCF-7, cellules NIH/3T3, cellules Raji, cellules SH-SY5Y, cellules SKOV-3, multi-cellules/tissus, tissu cardiaque de souris, tissu cérébral de souris, tissu de muscle squelettique de rat, tissu musculaire de souris

IHC : tissu de cancer du côlon humain,

IF : cellules HeLa,

Informations générales

PKM, also named as OIP3, PK2, PK3, PKM1/2, p58, THBP1, CTHBP and Tumor M2-PK, belongs to the pyruvate kinase family. It is glycolytic enzyme that catalyzes the transfer of a phosphoryl group from phosphoenolpyruvate (PEP) to ADP, generating ATP. It stimulates POU5F1-mediated transcriptional activation. PKM plays a general role in caspase independent cell death of tumor cells. PKM has 2 isoforms named as PKM1/M2. The activity of the M2 isoform can be inhibited by tyrosine kinase signalling in tumour cells. The primary pyruvate kinase isoform before tumour development is PKM1; however, the primary isoform from four independent tumours is PKM2. (PMID:18337823). This antibody can recognize both PKM1 and PKM2.

Publications notables

Autrice	Pubmed ID	Journal	Application
Li-Jun Wen	34956471	Am J Transl Res	WB, IHC
Liangliang Fu	28345649	Sci Rep	WB
Yang Yang	31211620	Am J Physiol Endocrinol Metab	WB

Stockage

Stockage:

Stocker à -20°C. Stable pendant un an après l'expédition.

Tampon de stockage:

PBS avec azoture de sodium à 0,02 % et glycérol à 50 % pH 7,3

L'aliquoteage n'est pas nécessaire pour le stockage à -20C

*** Les 20ul contiennent 0,1% de BSA.

For technical support and original validation data for this product please contact:

T: 1 (888) 4PTGLAB (1-888-478-4522) (toll free in USA), or 1(312) 455-8498 (outside USA)

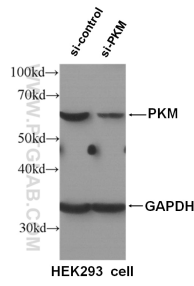
E: proteintech@ptglab.com
W: ptglab.com

This product is exclusively available under Proteintech Group brand and is not available to purchase from any other manufacturer.

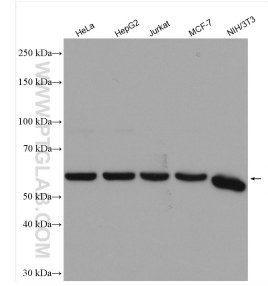
Données de validation sélectionnées



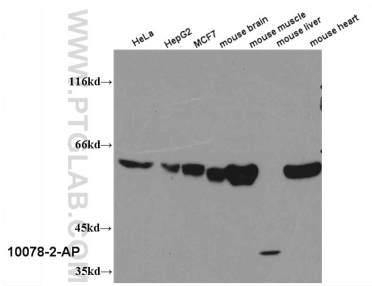
Immunohistochemical analysis of paraffin-embedded human colon cancer tissue slide using 10078-2-AP (PKM antibody) at dilution of 1:500 (under 10x lens). Heat mediated antigen retrieval with Tris-EDTA buffer (pH 9.0).



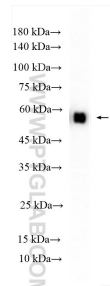
WB result of PKM antibody (10078-2-AP, 1:1000) with si-Control and si-PKM transfected HEK293 cells.



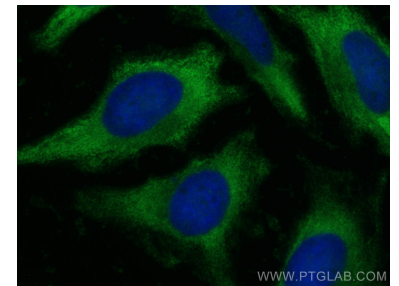
Various lysates were subjected to SDS PAGE followed by western blot with 10078-2-AP (PKM antibody) at dilution of 1:2000 incubated at room temperature for 1.5 hours.



WB result of 10078-2-AP (PKM antibody) with various lysates.



rat skeletal muscle tissue were subjected to SDS PAGE followed by western blot with 10078-2-AP (PKM antibody) at dilution of 1:2000 incubated at room temperature for 1.5 hours.



Immunofluorescent analysis of (-20°C Ethanol) fixed HeLa cells using PKM antibody (10078-2-AP) at dilution of 1:400 and CoraLite®488-Conjugated AffiniPure Goat Anti-Rabbit IgG(H+L).