

À des fins de recherche uniquement

Anticorps Polyclonal de lapin anti-GNB3



Numéro de catalogue: 10081-1-AP

6 Publications

Informations de base

Numéro de catalogue: 10081-1-AP	Numéro d'acquisition GenBank: BC000115	Méthode de purification: Purification par affinité contre l'antigène
Taille: 150ul, Concentration: 200 µg/ml by Nanodrop and 133 µg/ml by Bradford method using BSA as the standard;	Identification du gène (NCBI): 2784	Dilutions recommandées: WB 1:500-1:2000 IHC 1:100-1:400 IF 1:20-1:200
Hôte: Lapin	Nom complet: guanine nucleotide binding protein (G protein), beta polypeptide 3	
Isotype: IgG	MW calculé: 37 kDa	
Immunogen Catalog Number: AG0127	MW observés: 35-37 kDa	

Applications

Applications testées:

IF, IHC, WB, ELISA

Demandes citées:

IF, WB

Spécificité de l'espèce:

Humain, rat, souris

Espèces citées:

Humain, poisson-zèbre, rat, souris

Remarque-IHC: il est suggéré de démasquer l'antigène avec un tampon de TE buffer pH 9,0; (*) A défaut, 'le démasquage de l'antigène peut être effectué avec un tampon citrate pH 6,0.

Contrôles positifs:

WB : tissu cérébral de souris, tissu de cervelet de souris, tissu embryonnaire de souris, tissu oculaire de souris

IHC : tissu de cancer du foie humain,

IF : cellules HepG2,

Informations générales

Guanine nucleotide-binding proteins (g proteins) are involved as a modulator or transducer in various transmembrane signaling systems, by integrating signals between receptors and effector proteins. G proteins are composed of an alpha, a beta, and a gamma subunit. This gene encodes a 34 kd beta subunit, being expressed in all tissues. Beta subunits are important regulators of alpha subunits, as well as of certain signal transduction receptors and effectors.

Publications notables

Autrice	Pubmed ID	Journal	Application
Zhongwei Xin	36115836	Nat Commun	IF
Justinn Barr	36073526	Elife	IF
Zsofia I. Laszlo	36309735	Acta Neuropathol Commun	WB

Stockage

Stockage:

Stocker à -20°C. Stable pendant un an après l'expédition.

Tampon de stockage:

PBS avec azoture de sodium à 0,02 % et glycérol à 50 % pH 7,3

L'aliquotage n'est pas nécessaire pour le stockage à -20C

*** Les 20ul contiennent 0,1% de BSA.

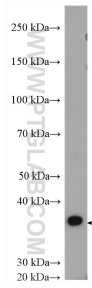
For technical support and original validation data for this product please contact:

T: 1 (888) 4PTGLAB (1-888-478-4522) (toll free in USA), or 1(312) 455-8498 (outside USA)

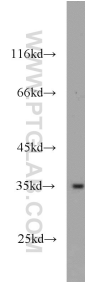
E: proteintech@ptglab.com
W: ptglab.com

This product is exclusively available under Proteintech Group brand and is not available to purchase from any other manufacturer.

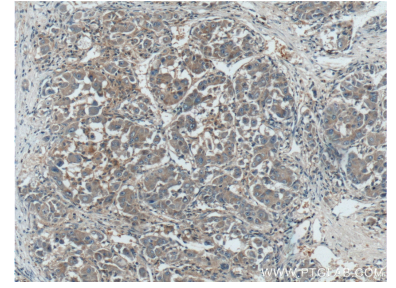
Données de validation sélectionnées



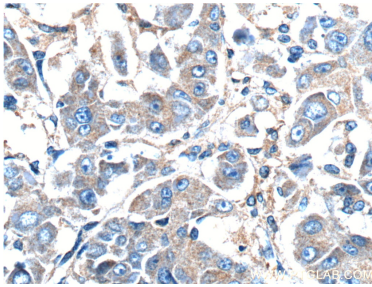
mouse cerebellum tissue were subjected to SDS PAGE followed by western blot with 10081-1-AP (GNB3 antibody) at dilution of 1:500 incubated at room temperature for 1.5 hours.



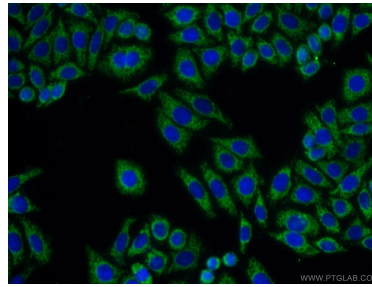
mouse brain tissue were subjected to SDS PAGE followed by western blot with 10081-1-AP (GNB3 antibody) at dilution of 1:1000 incubated at room temperature for 1.5 hours.



Immunohistochemical analysis of paraffin-embedded human liver cancer tissue slide using 10081-1-AP (GNB3 Antibody) at dilution of 1:200 (under 10x lens).



Immunohistochemical analysis of paraffin-embedded human liver cancer tissue slide using 10081-1-AP (GNB3 Antibody) at dilution of 1:200 (under 40x lens).



Immunofluorescent analysis of HepG2 cells using 10081-1-AP (GNB3 antibody) at dilution of 1:50 and Alexa Fluor 488-conjugated AffiniPure Goat Anti-Rabbit IgG(H+L).