

À des fins de recherche uniquement

# Anticorps Polyclonal de lapin anti-NOB1



Numéro de catalogue: 10091-2-AP

Phare

7 Publications

## Informations de base

Numéro de catalogue:  
10091-2-AP

Taille:  
150ul, Concentration: 450 µg/ml by Nanodrop and 300 µg/ml by Bradford method using BSA as the standard;

Hôte:  
Lapin

Isotype:  
IgG

Immunogen Catalog Number:  
AG0141

Numéro d'acquisition GenBank:  
BC000050

Identification du gène (NCBI):  
28987  
Nom complet:  
NIN1/RPN12 binding protein 1 homolog (S. cerevisiae)

MW calculé:  
47 kDa

MW observés:  
47-50 kDa

Méthode de purification:  
Purification par affinité contre l'antigène

Dilutions recommandées:  
WB 1:500-1:2000  
IP 0.5-4.0 ug for IP and 1:200-1:1000 for WB  
IHC 1:10-1:100

## Applications

Applications testées:  
IHC, IP, WB, ELISA

Demandes citées:  
IHC, WB

Spécificité de l'espèce:  
Humain

Espèces citées:  
Humain

**Remarque-IHC: il est suggéré de démasquer l'antigène avec un tampon de TE buffer pH 9,0; (\*) A défaut, 'le démasquage de l'antigène peut être effectué avec un tampon citrate pH 6,0.**

Contrôles positifs:

WB : cellules HeLa, cellules HepG2, cellules K-562, cellules SGC-7901

IP : cellules HepG2,

IHC : tissu de lymphome humain, tissu de cancer du côlon humain, tissu placentaire humain

## Informations générales

NOB1 was first identified in yeast as an essential gene encoding the Nin one binding protein, which is involved in pre-rRNA processing. In a late cytoplasmic processing step, Nob1 cleaves a 20S rRNA intermediate at cleavage site D to produce the mature 18S rRNA. In addition, NOB1 is a crucial molecule in the maturation of the 20S proteasome and protein degradation. It serves as a chaperone to join the 20S proteasome with the 19S regulatory particle in the nucleus and facilitates the maturation of the 20S proteasome. Recently NOB1 has been reported to be overexpressed in several types of cancer, suggesting its involvement in the tumorigenesis.

## Publications notables

Autrice	Pubmed ID	Journal	Application
Sabina Schütz	30201955	Nat Commun	WB
Xin Gao	27035645	Oncol Rep	
Xiao-Wen He	25624720	World J Gastroenterol	WB

## Stockage

Stockage:  
Stocker à -20°C. Stable pendant un an après l'expédition.

Tampon de stockage:  
PBS avec azoture de sodium à 0,02 % et glycérol à 50 % pH 7,3  
L'aliquotage n'est pas nécessaire pour le stockage à -20C

\*\*\* Les 20ul contiennent 0,1% de BSA.

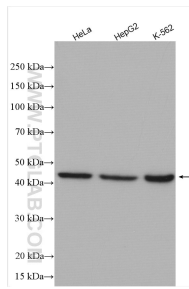
For technical support and original validation data for this product please contact:

T: 1 (888) 4PTGLAB (1-888-478-4522) (toll free in USA), or 1(312) 455-8498 (outside USA)

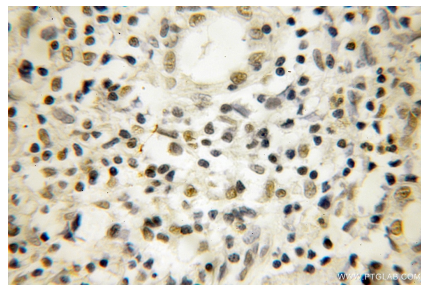
E: proteintech@ptglab.com  
W: ptglab.com

This product is exclusively available under Proteintech Group brand and is not available to purchase from any other manufacturer.

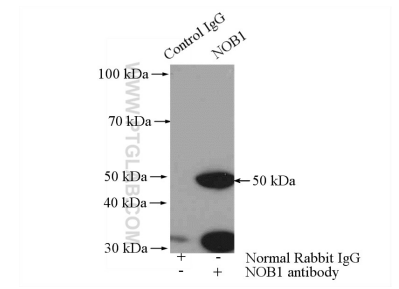
## Données de validation sélectionnées



Various lysates were subjected to SDS PAGE followed by western blot with 10091-2-AP (NOB1 antibody) at dilution of 1:1000 incubated at room temperature for 1.5 hours.



Immunohistochemical analysis of paraffin-embedded human lymphoma using 10091-2-AP (NOB1 antibody) at dilution of 1:25 (under 10x lens).



IP Result of anti-NOB1 (IP:10091-2-AP, 4ug; Detection:10091-2-AP 1:300) with HepG2 cells lysate 2400ug.