

À des fins de recherche uniquement

# Anticorps Polyclonal de lapin anti-GTF2F1



Numéro de catalogue: 10093-2-AP

1 Publications

## Informations de base

Numéro de catalogue:  
10093-2-AP

Taille:  
150ul, Concentration: 600 µg/ml by Nanodrop and 280 µg/ml by Bradford method using BSA as the standard;

Hôte:  
Lapin

Isotype:  
IgG

Immunogen Catalog Number:  
AG0133

Numéro d'acquisition GenBank:  
BC000120

Identification du gène (NCBI):  
2962  
Nom complet:  
general transcription factor IIF, polypeptide 1, 74kDa

MW calculé:  
58 kDa

MW observés:  
74 kDa

Méthode de purification:  
Purification par affinité contre l'antigène

Dilutions recommandées:  
WB 1:500-1:2000  
IP 0.5-4.0 ug for IP and 1:200-1:1000 for WB

## Applications

Applications testées:  
IP, WB, ELISA

Demandes citées:  
WB

Spécificité de l'espèce:  
Humain, rat, souris

Espèces citées:  
Humain

Contrôles positifs:

WB : cellules K-562,

IP : cellules K-562,

## Informations générales

In eukaryotic systems, the initiation of gene transcription involves the ordered assembly of a multiprotein complex on proximal promoter elements, consisting of RNA polymerase II and broad families of auxiliary transcription factors. Such factors can be divided into two major functional classes: the basal factors that are required for transcription of all Pol II genes, including TFIIA, B, D, E, F and H; and sequence specific factors that regulate gene expression. The basal transcription factors and Pol II form a specific multiprotein complex near the transcription start site by interacting with core promoter elements such as the TATA box generally located 25-30 base pairs upstream of the transcription start site. TFIIIF, a heteromer composed of a small (RAP 30) and a large (RAP 74) subunit, acting at an intermediate stage in initiation complex formation, binds directly to RNA polymerase II in solution and decrease the affinity of RNA polymerase II for nonspecific DNA. In addition, TFIIIF stimulates transcription elongation by RNA polymerase II.

## Publications notables

Autrice	Pubmed ID	Journal	Application
Xinxin Wang	35476980	Cell Rep	WB

## Stockage

Stockage:

Stocker à -20°C. Stable pendant un an après l'expédition.

Tampon de stockage:

PBS avec azoture de sodium à 0,02 % et glycérol à 50 % pH 7,3

L'aliquotage n'est pas nécessaire pour le stockage à -20C

\*\*\* Les 20ul contiennent 0,1% de BSA.

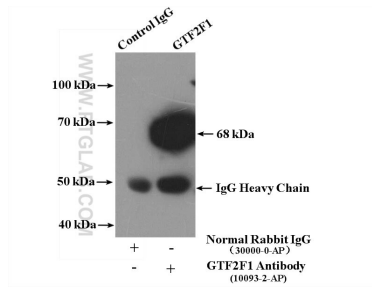
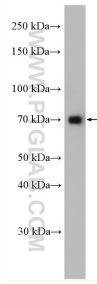
For technical support and original validation data for this product please contact:

T: 1 (888) 4PTGLAB (1-888-478-4522) (toll free in USA), or 1(312) 455-8498 (outside USA)

E: [proteintech@ptglab.com](mailto:proteintech@ptglab.com)  
W: [ptglab.com](http://ptglab.com)

This product is exclusively available under Proteintech Group brand and is not available to purchase from any other manufacturer.

## Données de validation sélectionnées



K-562 cells were subjected to SDS PAGE followed by western blot with 10093-2-AP (GTF2F1 antibody) at dilution of 1:1000 incubated at room temperature for 1.5 hours.

IP Result of anti-GTF2F1 (IP:10093-2-AP, 4ug; Detection:10093-2-AP 1:300) with K-562 cells lysate 4000ug.