

À des fins de recherche uniquement

Anticorps Polyclonal de lapin anti-Beta Tubulin



Numéro de catalogue: 10094-1-AP

674 Publications

Informations de base

Numéro de catalogue:

10094-1-AP

Taille:

150ul, Concentration: 600 µg/ml by Nanodrop;

Hôte:

Lapin

Isotype:

IgG

Immunogen Catalog Number:

AG0136

Numéro d'acquisition GenBank:

BC000748

Identification du gène (NCBI):

10381

Nom complet:

tubulin, beta 3

MW calculé

50 kDa

MW observés:

55 kDa

Méthode de purification:

Purification par affinité contre l'antigène

Dilutions recommandées:

WB 1:2000-1:12000

IP 0.5-4.0 ug for IP and 1:500-1:2000 for WB

IHC 1:20-1:200

IF 1:50-1:500

Applications

Applications testées:

FC, IF, IHC, IP, WB, ELISA

Demandes citées:

CoIP, IF, IHC, IP, WB

Spécificité de l'espèce:

Humain, rat, souris

Espèces citées:

Chèvre, Humain, poisson-zèbre, porc, poulet, rat, souris, Hamster, fish

Remarque-IHC: il est suggéré de démasquer l'antigène avec un tampon de TE buffer pH 9,0; (*) À défaut, 'le démasquage de l'antigène peut être 'effectué avec un tampon citrate pH 6,0.

Contrôles positifs:

WB : cellules U-251, cellules HEK-293, tissu cérébral de rat, tissu cérébral de souris, tissu rénal de rat, tissu rénal de souris

IP : tissu cérébral de souris,

IHC : tissu cérébral de rat, tissu cérébral de souris, tissu de cervelet humain, tissu de côlon humain, tissu testiculaire de rat

IF : cellules HepG2,

Informations générales

There are five tubulins in human cells: alpha, beta, gamma, delta, and epsilon. Tubulins are conserved across species. They form heterodimers, which multimerize to form a microtubule filament. An alpha and beta tubulin heterodimer is the basic structural unit of microtubules. The heterodimer does not come apart, once formed. The alpha and beta tubulins, which are each about 55 kDa MW, are homologous but not identical. Alpha, beta, and gamma tubulins have all been used as loading controls. Tubulin expression may vary according to resistance to antimicrobial and antimetabolic drugs.

Publications notables

Autrice	Pubmed ID	Journal	Application
Shasha Nie	36231051	Cells	WB
Yu Wang	34658758	Front Neurosci	WB
Xudong Zhu	33162805	Int J Med Sci	WB

Stockage

Stockage:

Stocker à -20°C. Stable pendant un an après l'expédition.

Tampon de stockage:

PBS avec azoture de sodium à 0,02 % et glycérol à 50 % pH 7,3

L'aliquotage n'est pas nécessaire pour le stockage à -20C

*** Les 20ul contiennent 0,1% de BSA.

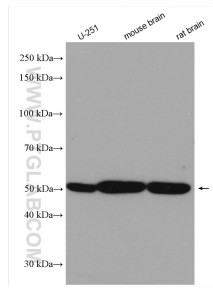
For technical support and original validation data for this product please contact:

T: 1 (888) 4PTGLAB (1-888-478-4522) (toll free in USA), or 1(312) 455-8498 (outside USA)

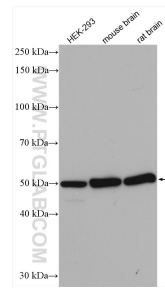
E: proteintech@ptglab.com
W: ptglab.com

This product is exclusively available under Proteintech Group brand and is not available to purchase from any other manufacturer.

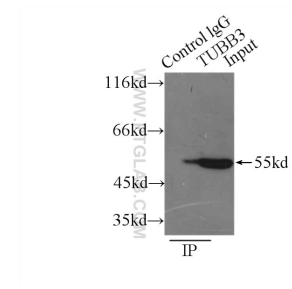
Données de validation sélectionnées



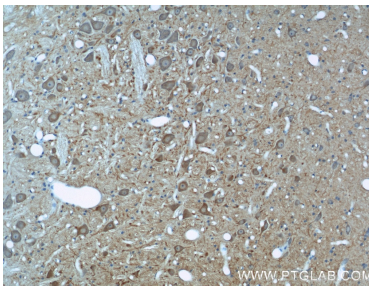
Various lysates were subjected to SDS PAGE followed by western blot with 10094-1-AP (Beta Tubulin antibody) at dilution of 1:6000 incubated at room temperature for 1.5 hours.



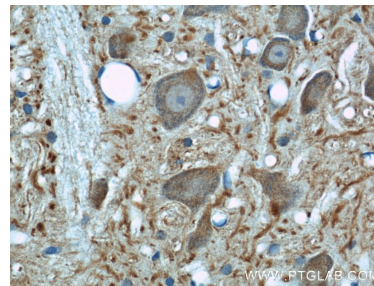
Various lysates were subjected to SDS PAGE followed by western blot with 10094-1-AP (beta Tubulin antibody) at dilution of 1:2500 incubated at room temperature for 1.5 hours.



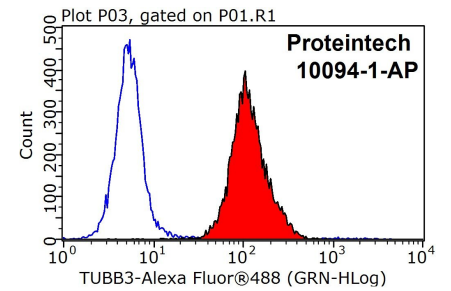
IP Result of anti-beta Tubulin (IP:10094-1-AP, 3ug; Detection:10094-1-AP 1:1000) with mouse brain tissue lysate 7500ug.



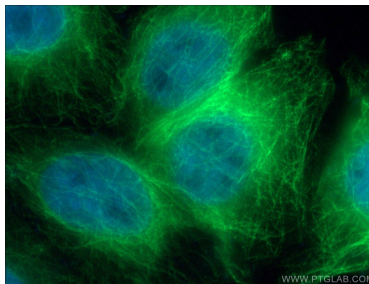
Immunohistochemical analysis of paraffin-embedded rat brain using 10094-1-AP (beta Tubulin antibody) at dilution of 1:50 (under 10x lens).



Immunohistochemical analysis of paraffin-embedded rat brain using 10094-1-AP (beta Tubulin antibody) at dilution of 1:50 (under 40x lens).



1X10⁶ HepG2 cells were stained with 0.2ug beta Tubulin antibody (10094-1-AP, red) and control antibody (blue). Fixed with 90% MeOH blocked with 3% BSA (30 min). Alexa Fluor 488-conjugated AffiniPure Goat Anti-Rabbit IgG(H+L) with dilution 1:1000.



Immunofluorescent analysis of (4% PFA) fixed HepG2 cells using 10094-1-AP (beta Tubulin antibody) at dilution of 1:50 and Alexa Fluor 488-conjugated AffiniPure Goat Anti-Rabbit IgG(H+L).