

À des fins de recherche uniquement

Anticorps Polyclonal de lapin anti-PITRM1



Numéro de catalogue: 10101-2-AP

2 Publications

Informations de base

Numéro de catalogue:
10101-2-AP

Taille:
150ul, Concentration: 500 µg/ml by Nanodrop and 140 µg/ml by Bradford method using BSA as the standard;

Hôte:
Lapin

Isotype:
IgG

Immunogen Catalog Number:
AG0150

Numéro d'acquisition GenBank:
BC001150

Identification du gène (NCBI):
10531

Nom complet:
pitrilysin metallopeptidase 1

MW calculé
60 kDa, 117 kDa

MW observés:
110-117 kDa

Méthode de purification:
Purification par affinité contre l'antigène

Dilutions recommandées:
WB 1:200-1:1000
IP 0.5-4.0 µg for IP and 1:500-1:1000 for WB
IHC 1:100-1:400
IF 1:50-1:500

Applications

Applications testées:
IF, IHC, IP, WB, ELISA

Demandes citées:
WB

Spécificité de l'espèce:
Humain, rat, souris

Espèces citées:
Humain, souris

Remarque-IHC: il est suggéré de démasquer l'antigène avec un tampon de TE buffer pH 9,0; (*) A défaut, 'le démasquage de l'antigène peut être 'effectué avec un tampon citrate pH 6,0.

Contrôles positifs:

WB : tissu placentaire humain, cellules A549, tissu testiculaire de souris

IP : cellules A549,

IHC : tissu de cancer du sein humain, tissu d'ostéosarcome humain

IF : cellules A549,

Informations générales

PITRM1 (Presequence protease, mitochondrial) is a ATP-independent protease that degrades mitochondrial transit peptides after their cleavage. It is specific for peptides in the range of 10 to 65 residues and able to degrade amyloid beta A4 (APP) protein when it accumulates in mitochondrion, suggesting a link with Alzheimer disease. It shows a preference for cleavage after small polar residues and before basic residues, but without any positional preference (PMID:16849325). This protein has a calculated molecular mass of 117kD and it is expressed widely. This antibody is specific to PITRM1.

Publications notables

Autrice	Pubmed ID	Journal	Application
Evelyn Fessler	35388015	Nat Commun	WB
Mitchell Andrew J AJ	23894327	PLoS One	WB

Stockage

Stockage:

Stocker à -20°C. Stable pendant un an après l'expédition.

Tampon de stockage:

PBS avec azoture de sodium à 0,02 % et glycérol à 50 % pH 7,3

L'aliquotage n'est pas nécessaire pour le stockage à -20C

*** Les 20ul contiennent 0,1% de BSA.

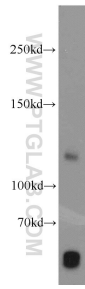
For technical support and original validation data for this product please contact:

T: 1 (888) 4PTGLAB (1-888-478-4522) (toll free in USA), or 1(312) 455-8498 (outside USA)

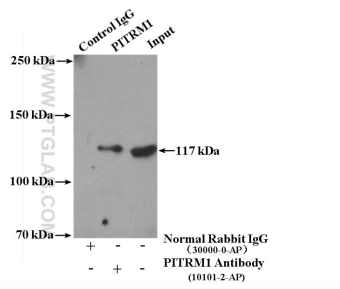
E: proteintech@ptglab.com
W: ptglab.com

This product is exclusively available under Proteintech Group brand and is not available to purchase from any other manufacturer.

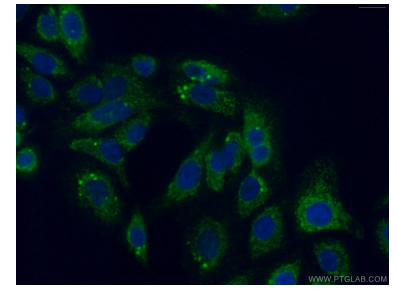
Données de validation sélectionnées



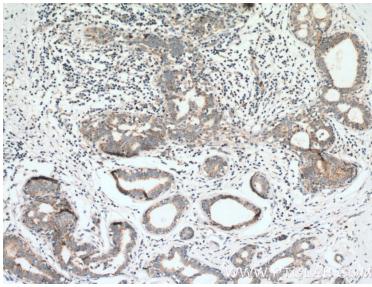
human placenta tissue were subjected to SDS PAGE followed by western blot with 10101-2-AP (PITRM1 antibody) at dilution of 1:300 incubated at room temperature for 1.5 hours.



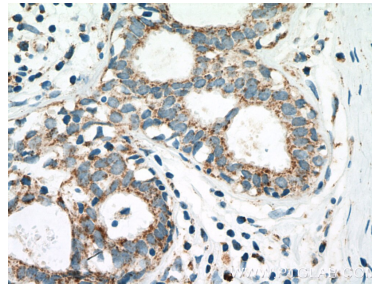
IP Result of anti-PITRM1 (IP:10101-2-AP, 4ug; Detection:10101-2-AP 1:500) with A549 cells lysate 2000ug.



Immunofluorescent analysis of (4% PFA) fixed A549 cells using 10101-2-AP (PITRM1 antibody) at dilution of 1:50 and Alexa Fluor 488-conjugated AffiniPure Goat Anti-Rabbit IgG(H+L).



Immunohistochemical analysis of paraffin-embedded human breast cancer tissue slide using 10101-2-AP (PITRM1 Antibody) at dilution of 1:200 (under 10x lens). Heat mediated antigen retrieval with Tris-EDTA buffer (pH 9.0).



Immunohistochemical analysis of paraffin-embedded human breast cancer tissue slide using 10101-2-AP (PITRM1 Antibody) at dilution of 1:200 (under 40x lens). Heat mediated antigen retrieval with Tris-EDTA buffer (pH 9.0).