

À des fins de recherche uniquement

Anticorps Polyclonal de lapin anti-DAB2



Numéro de catalogue: 10109-2-AP

7 Publications

Informations de base

Numéro de catalogue:

10109-2-AP

Taille:

150ul, Concentration: 600 µg/ml by Nanodrop and 367 µg/ml by Bradford method using BSA as the standard;

Hôte:

Lapin

Isotype:

IgG

Immunogen Catalog Number:

AG0162

Numéro d'acquisition GenBank:

BC003064

Identification du gène (NCBI):

1601

Nom complet:

disabled homolog 2, mitogen-responsive phosphoprotein (Drosophila)

MW calculé

82 kDa

MW observés:

96 kDa

Méthode de purification:

Purification par affinité contre l'antigène

Dilutions recommandées:

WB 1:1000-1:6000

IP 0.5-4.0 ug for IP and 1:1000-1:4000 for WB

IHC 1:50-1:500

IF 1:50-1:500

Applications

Applications testées:

FC, IF, IHC, IP, WB, ELISA

Demandes citées:

IF, IHC, IP, WB

Spécificité de l'espèce:

Humain

Espèces citées:

Humain, poulet

Remarque-IHC: il est suggéré de démasquer l'antigène avec un tampon de TE buffer pH 9.0; (*) A défaut, 'le démasquage de l'antigène peut être 'effectué avec un tampon citrate pH 6,0.

Contrôles positifs:

WB : cellules HeLa, cellules MCF-7

IP : cellules HeLa,

IHC : tissu rénal humain,

IF : cellules HeLa,

Informations générales

DAB2 is a protein of 770 amino acid residues with a predicted molecular weight of 85.5kDa. This gene was initially named DOC2 (for Differentially expressed in Ovarian Cancer) and is distinct from the DOC2A and DOC2B genes (for double C2-like domains, alpha and beta). Human DAB2 has an overall 83% identity with the mouse p96 protein, a putative mitogen-responsive phosphoprotein; homology is strongest in the amino-terminal end of the protein in a region corresponding to the phosphotyrosine interaction domain (PID), and contains multiple SH3 binding motifs. Chromosomal localization by FISH showed that the DAB2 gene is located on 5p13. The expression of DAB2 is down-regulated or absent in all the carcinoma cell lines examined, including prostate and ovarian carcinoma cell lines. The N-terminal domain of DAB2 interacts with Dishevelled-3 (Dvl-3), a signaling mediator of the Wnt pathway. Ectopic expression of DAB2 attenuates canonical Wnt/catenin-mediated signaling, including accumulation of catenin and cyclin D1 induction. DAB2 suppresses both protein kinase C and peptide growth factor-elicited signal pathways via the Ras-mitogen-activated protein kinase pathway. The proline-rich domain of DAB2 also interacts with proteins containing SH3 domain, such as Src and Fgr. The binding of DAB2 to c-Src results in the inactivation of c-Src. All data suggest that DAB2 is a potent tumor suppressor in many cancer types.

Publications notables

Autrice	Pubmed ID	Journal	Application
Minxia Zuo	36330072	J Diabetes Res	WB
Akira Honda	30061390	Proc Natl Acad Sci U S A	IP
María D Vazquez-Carretero	32617970	J Cell Physiol	IF

Stockage

Stockage:

Stocker à -20°C. Stable pendant un an après l'expédition.

Tampon de stockage:

PBS avec azoture de sodium à 0,02 % et glycérol à 50 % pH 7,3

L'aliquotage n'est pas nécessaire pour le stockage à -20C

*** Les 20ul contiennent 0,1% de BSA.

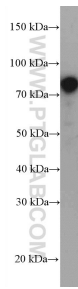
For technical support and original validation data for this product please contact:

T: 1 (888) 4PTGLAB (1-888-478-4522) (toll free in USA), or 1(312) 455-8498 (outside USA)

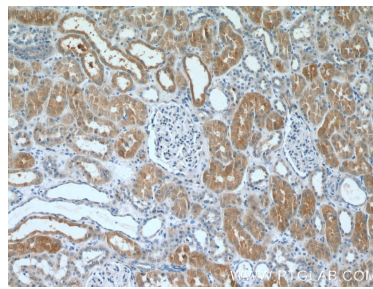
E: proteintech@ptglab.com
W: ptglab.com

This product is exclusively available under Proteintech Group brand and is not available to purchase from any other manufacturer.

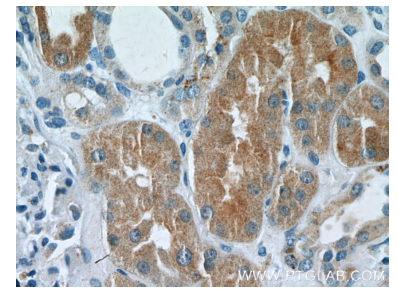
Données de validation sélectionnées



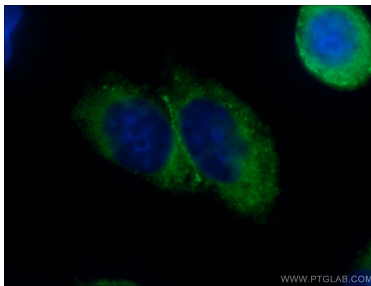
HeLa cells were subjected to SDS PAGE followed by western blot with 10109-2-AP (DAB2 antibody) at dilution of 1:3000 incubated at room temperature for 1.5 hours.



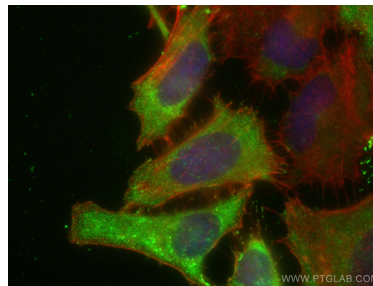
Immunohistochemical analysis of paraffin-embedded human kidney tissue slide using 10109-2-AP (DAB2 Antibody) at dilution of 1:200 (under 10x lens).



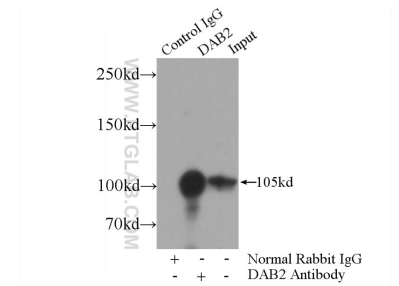
Immunohistochemical analysis of paraffin-embedded human kidney tissue slide using 10109-2-AP (DAB2 Antibody) at dilution of 1:200 (under 40x lens).



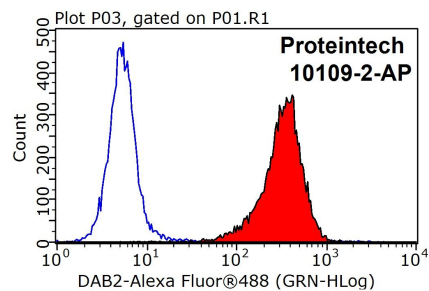
Immunofluorescent analysis of (-20°C Ethanol) fixed HeLa cells using 10109-2-AP (DAB2 antibody) at dilution of 1:50 and Alexa Fluor 488-conjugated AffiniPure Goat Anti-Rabbit IgG(H+L).



Immunofluorescent analysis of (-20°C Ethanol) fixed HeLa cells using DAB2 antibody (10109-2-AP) at dilution of 1:200 and Coralite@488-Conjugated AffiniPure Goat Anti-Rabbit IgG(H+L), CL594-phalloidin (red).



IP Result of anti-DAB2 (IP:10109-2-AP, 4ug; Detection:10109-2-AP 1:2000) with HeLa cells lysate 4000ug.



1X10⁶ HepG2 cells were stained with 0.2ug DAB2 antibody (10109-2-AP, red) and control antibody (blue). Fixed with 90% MeOH blocked with 3% BSA (30 min). Alexa Fluor 488-conjugated AffiniPure Goat Anti-Rabbit IgG(H+L) with dilution 1:1000.