

À des fins de recherche uniquement

# Anticorps Polyclonal de lapin anti-PRC1



Numéro de catalogue: 10110-2-AP

Phare

1 Publications

## Informations de base

Numéro de catalogue:  
10110-2-AP

Taille:  
150ul, Concentration: 600 µg/ml by Nanodrop and 300 µg/ml by Bradford method using BSA as the standard;

Hôte:  
Lapin

Isotype:  
IgG

Immunogen Catalog Number:  
AG0163

Numéro d'acquisition GenBank:  
BC005140

Identification du gène (NCBI):  
9055

Nom complet:  
protein regulator of cytokinesis 1

MW calculé  
67 kDa

MW observés:  
67 kDa

Méthode de purification:  
Purification par affinité contre l'antigène

Dilutions recommandées:  
WB 1:2000-1:12000  
IHC 1:50-1:500

## Applications

Applications testées:  
IHC, WB, ELISA

Demandes citées:  
WB

Spécificité de l'espèce:  
Humain, rat, souris

Espèces citées:  
Humain

**Remarque-IHC: il est suggéré de démasquer l'antigène avec un tampon de TE buffer pH 9,0; (\*) A défaut, le démasquage de l'antigène peut être effectué avec un tampon citrate pH 6,0.**

Contrôles positifs:

WB : cellules MCF-7, cellules HEK-293, cellules HeLa, cellules HepG2

IHC : tissu de cancer du côlon humain,

## Informations générales

PRC1 is involved in cytokinesis. PRC1 is at high level during S and G2/M and drop dramatically after cell exit mitosis and enter G1. PRC1 is located in the nucleus during interphase, and becomes associated with mitotic spindles in a highly dynamic manner during mitosis, and localizes to the cell mid-body during cytokinesis. PRC1 is a good substrate for several cyclin-dependent kinases (CDKs) in vitro and is phosphorylated in vivo at sites that are phosphorylated by CDK in vitro, suggesting that PRC1 is an in vivo CDK substrate.

## Publications notables

Autrice	Pubmed ID	Journal	Application
Qiang Wang	37647439	Immun Inflamm Dis	WB

## Stockage

Stockage:  
Stocker à -20°C. Stable pendant un an après l'expédition.

Tampon de stockage:  
PBS avec azoture de sodium à 0,02 % et glycérol à 50 % pH 7,3  
L'aliquotage n'est pas nécessaire pour le stockage à -20C

\*\*\* Les 20ul contiennent 0,1% de BSA.

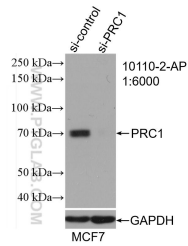
For technical support and original validation data for this product please contact:

T: 1 (888) 4PTGLAB (1-888-478-4522) (toll free in USA), or 1(312) 455-8498 (outside USA)

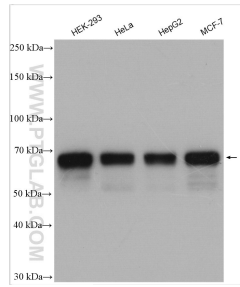
E: proteintech@ptglab.com  
W: ptglab.com

This product is exclusively available under Proteintech Group brand and is not available to purchase from any other manufacturer.

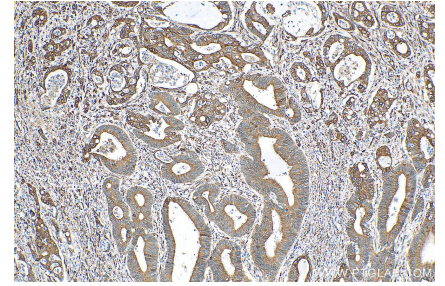
## Données de validation sélectionnées



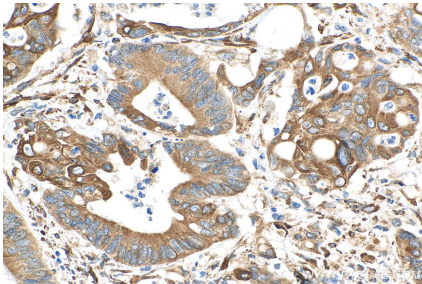
WB result of PRC1 antibody (10110-2-AP; 1:6000; incubated at room temperature for 1.5 hours) with sh-Control and sh-PRC1 transfected MCF-7 cells.



Various lysates were subjected to SDS PAGE followed by western blot with 10110-2-AP (PRC1 antibody) at dilution of 1:10000 incubated at room temperature for 1.5 hours.



Immunohistochemical analysis of paraffin-embedded human colon cancer tissue slide using 10110-2-AP (PRC1 antibody) at dilution of 1:200 (under 10x lens). Heat mediated antigen retrieval with Tris-EDTA buffer (pH 9.0).



Immunohistochemical analysis of paraffin-embedded human colon cancer tissue slide using 10110-2-AP (PRC1 antibody) at dilution of 1:200 (under 40x lens). Heat mediated antigen retrieval with Tris-EDTA buffer (pH 9.0).