

À des fins de recherche uniquement

Anticorps Polyclonal de lapin anti- NUMBL



Numéro de catalogue: 10111-1-AP

Phare

5 Publications

Informations de base

Numéro de catalogue:

10111-1-AP

Taille:

150ul, Concentration: 550 µg/ml by Nanodrop and 300 µg/ml by Bradford method using BSA as the standard;

Hôte:

Lapin

Isotype:

IgG

Immunogen Catalog Number:

AG0156

Numéro d'acquisition GenBank:

BC001794

Identification du gène (NCBI):

9253

Nom complet:

numb homolog (Drosophila)-like

MW calculé

65 kDa

MW observés:

65-70 kDa

Méthode de purification:

Purification par affinité contre l'antigène

Dilutions recommandées:

WB 1:1000-1:4000

IP 0.5-4.0 ug for IP and 1:500-1:2000 for WB

IHC 1:50-1:500

IF 1:50-1:500

Applications

Applications testées:

IF, IHC, IP, WB, ELISA

Demandes citées:

IHC, WB

Spécificité de l'espèce:

Humain, rat, souris

Espèces citées:

Humain, souris

Remarque-IHC: il est suggéré de démasquer l'antigène avec un tampon de TE buffer pH 9,0; (*) A défaut, 'le démasquage de l'antigène peut être 'effectué avec un tampon citrate pH 6,0.

Contrôles positifs:

WB : tissu cérébral de souris, cellules HeLa, tissu hépatique de souris, tissu pulmonaire de souris, tissu splénique de souris

IP : cellules HeLa,

IHC : tissu cérébral humain, tissu de gliome humain

IF : cellules PC-12, cellules HepG2

Informations générales

Numbl (also known as numbl like or Nbl), as a conserved homolog of Drosophila Numb, is specifically expressed in the brain. Numbl is a cytoplasm protein and has redundant functions in embryonic neurogenesis. It plays an important role in ependymal wall integrity and subventricular zone neuroblast survival. However, its expression and function in the central nervous system lesion are still unclear.

Publications notables

Autrice	Pubmed ID	Journal	Application
Yusuke Okubo	34519339	Development	WB
Rasin Mladen-Roko MR	17589506	Nat Neurosci	WB
Vaira Valentina V	23440423	Cancer Res	WB, IHC

Stockage

Stockage:

Stocker à -20°C. Stable pendant un an après l'expédition.

Tampon de stockage:

PBS avec azoture de sodium à 0,02 % et glycérol à 50 % pH 7,3

L'aliquotage n'est pas nécessaire pour le stockage à -20C

***** Les 20ul contiennent 0,1% de BSA.**

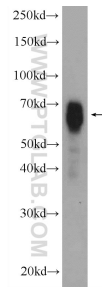
For technical support and original validation data for this product please contact:

T: 1 (888) 4PTGLAB (1-888-478-4522) (toll free in USA), or 1(312) 455-8498 (outside USA)

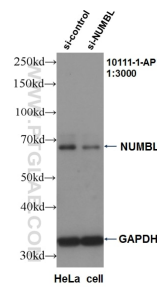
E: proteintech@ptglab.com
W: ptglab.com

This product is exclusively available under Proteintech Group brand and is not available to purchase from any other manufacturer.

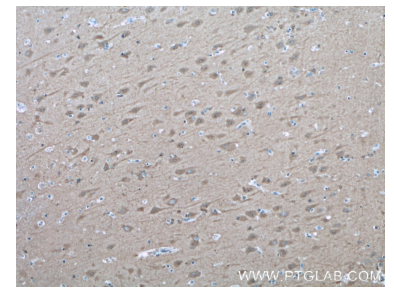
Données de validation sélectionnées



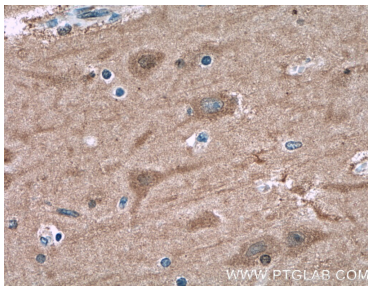
mouse brain tissue were subjected to SDS PAGE followed by western blot with 10111-1-AP (NUMBL antibody at dilution of 1:2000 incubated at 4 degree celsius over night.



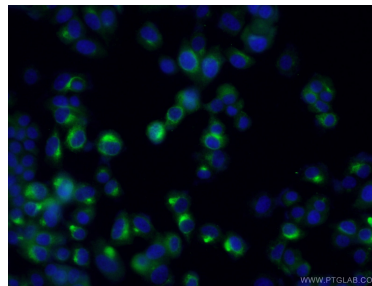
WB result of NUMBL antibody (10111-1-AP, 1:3000) with si-Control and si-NUMBL transfected HeLa cells.



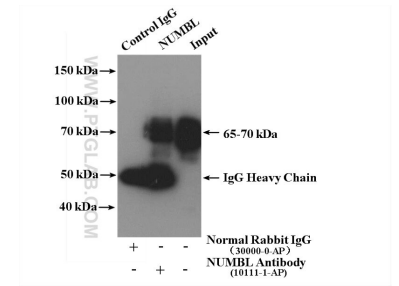
Immunohistochemical analysis of paraffin-embedded human brain tissue slide using 10111-1-AP (NUMBL antibody) at dilution of 1:200 (under 10x lens. Heat mediated antigen retrieval with Tris-EDTA buffer (pH 9.0).



Immunohistochemical analysis of paraffin-embedded human brain tissue slide using 10111-1-AP (NUMBL antibody) at dilution of 1:200 (under 40x lens. Heat mediated antigen retrieval with Tris-EDTA buffer (pH 9.0).



Immunofluorescent analysis of (-20°C Ethanol) fixed PC-12 cells using 10111-1-AP (NUMBL antibody) at dilution of 1:50 and Alexa Fluor 488-Conjugated AffiniPure Goat Anti-Rabbit IgG(H+L).



IP result of anti-NUMBL (IP:10111-1-AP, 4ug; Detection:10111-1-AP 1:1000) with HeLa cells lysate 2800 ug.