

À des fins de recherche uniquement

Anticorps Polyclonal de lapin anti-SNX6



Numéro de catalogue: 10114-1-AP

Phare

2 Publications

Informations de base

Numéro de catalogue:
10114-1-AP

Taille:
150ul, Concentration: 300 µg/ml by Nanodrop and 173 µg/ml by Bradford method using BSA as the standard;

Hôte:
Lapin

Isotype:
IgG

Immunogen Catalog Number:
AG0168

Numéro d'acquisition GenBank:
BC001798

Identification du gène (NCBI):
58533

Nom complet:
sorting nexin 6

MW calculé
34 kDa

MW observés:
47 kDa

Méthode de purification:
Purification par affinité contre l'antigène

Dilutions recommandées:
WB 1:2000-1:10000
IP 0.5-4.0 ug for IP and 1:500-1:1000 for WB
IHC 1:50-1:500
IF 1:50-1:500

Applications

Applications testées:
FC, IF, IHC, IP, WB, ELISA

Demandes citées:
IHC, WB

Spécificité de l'espèce:
Humain, rat, souris

Espèces citées:
Humain

Remarque-IHC: il est suggéré de démasquer l'antigène avec un tampon de TE buffer pH 9,0; (*) A défaut, 'le démasquage de l'antigène peut être 'effectué avec un tampon citrate pH 6,0.

Contrôles positifs:

WB : cellules HeLa, cellules HepG2, cellules RAW 264.7, tissu cérébral de souris, tissu placentaire humain

IP : cellules HepG2,

IHC : tissu cérébral de souris, tissu cardiaque humain, tissu de cancer de la prostate humain

IF : cellules HepG2,

Informations générales

Sorting nexins (SNX) have previously been shown to regulate the cell-surface expression of the human epidermal growth factor receptor. On the basis of the predicted protein sequences, several members of this family, including SNX6, have been identified. SNX6, containing coiled-coil regions within its large C-terminal domain and is found distributed in both membrane and cytosolic fractions, typical of hydrophilic peripheral membrane proteins. The functions of SNX6 are likely to be unique to endosomes, mediated in part by interactions with SNX6-specific C-terminal sequences and membrane-associated determinants

Publications notables

Autrice	Pubmed ID	Journal	Application
Pengfei Hu	30307473	Acta Biochim Biophys Sin (Shanghai)	WB,IHC
Chuchu Zhou	35332264	Nat Cell Biol	WB

Stockage

Stockage:
Stocker à -20°C. Stable pendant un an après l'expédition.

Tampon de stockage:
PBS avec azoture de sodium à 0,02 % et glycérol à 50 % pH 7,3
L'aliquotage n'est pas nécessaire pour le stockage à -20C

*** Les 20ul contiennent 0,1% de BSA.

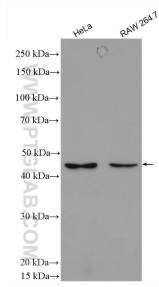
For technical support and original validation data for this product please contact:

T: 1 (888) 4PTGLAB (1-888-478-4522) (toll free in USA), or 1(312) 455-8498 (outside USA)

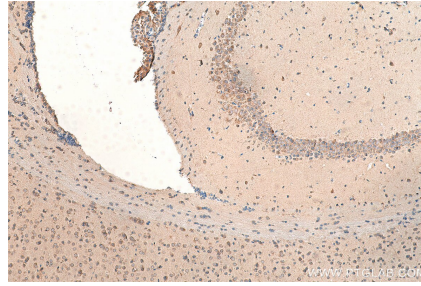
E: proteintech@ptglab.com
W: ptglab.com

This product is exclusively available under Proteintech Group brand and is not available to purchase from any other manufacturer.

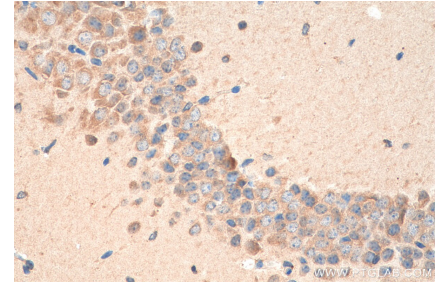
Données de validation sélectionnées



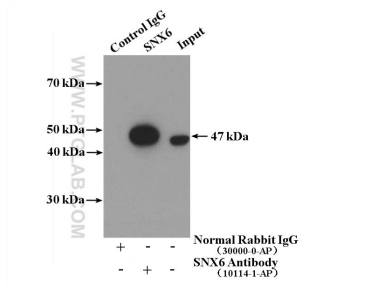
Various lysates were subjected to SDS PAGE followed by western blot with 10114-1-AP (SNX6 antibody) at dilution of 1:5000 incubated at room temperature for 1.5 hours.



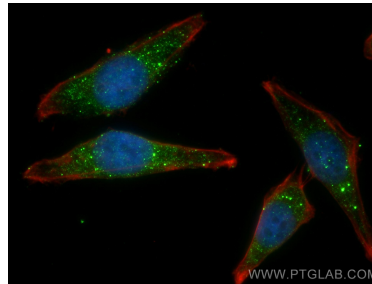
Immunohistochemical analysis of paraffin-embedded mouse brain tissue slide using 10114-1-AP (SNX6 antibody) at dilution of 1:200 (under 10x lens). Heat mediated antigen retrieval with Tris-EDTA buffer (pH 9.0).



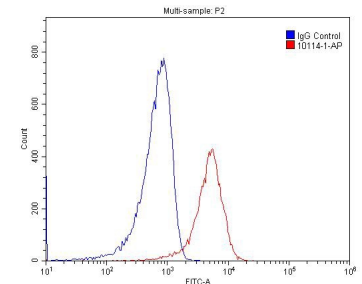
Immunohistochemical analysis of paraffin-embedded mouse brain tissue slide using 10114-1-AP (SNX6 antibody) at dilution of 1:200 (under 40x lens). Heat mediated antigen retrieval with Tris-EDTA buffer (pH 9.0).



IP Result of anti-SNX6 (IP:10114-1-AP, 4 μ g; Detection:10114-1-AP 1:600) with HepG2 cells lysate 4000 μ g.



Immunofluorescent analysis of (4% PFA) fixed HepG2 cells using SNX6 antibody (10114-1-AP) at dilution of 1:200 and CoraLite@488-Conjugated AffiniPure Goat Anti-Rabbit IgG(H+L), CL594-Phalloidin (red).



1X10⁶ RAW 264.7 cells were stained with 0.2 μ g SNX6 antibody (10114-1-AP, red) and control antibody (blue). Alexa Fluor 488-conjugated AffiniPure Goat Anti-Rabbit IgG(H+L) with dilution 1:1500. Cells were fixed with 4% PFA and permeabilized with 0.1% Triton X-100.