

À des fins de recherche uniquement

Anticorps Polyclonal de lapin anti-PCDHA2



Numéro de catalogue: 10127-2-AP

Informations de base

Numéro de catalogue:
10127-2-AP

Taille:
150ul , Concentration: 600 µg/ml by
Nanodrop and 300 µg/ml by Bradford
method using BSA as the standard;

Hôte:
Lapin

Isotype:
IgG

Immunogen Catalog Number:
AG0173

Numéro d'acquisition GenBank:
BC003126

Identification du gène (NCBI):
56146

Nom complet:
protocadherin alpha 2

MW calculé
102 kDa

MW observés:
102 kDa, 80 kDa

Méthode de purification:
Purification par affinité contre
l'antigène

Dilutions recommandées:
WB 1:500-1:1000
IP 0.5-4.0 ug for IP and 1:200-1:1000
for WB

Applications

Applications testées:
IP, WB, ELISA

Spécificité de l'espèce:
Humain, rat, souris

Contrôles positifs:

WB : tissu cérébral de souris, cellules HeLa, cellules
Raji, tissu cardiaque humain, tissu cérébral de rat, tissu
cérébral humain, tissu de cervelet de rat, tissu de
cervelet de souris

IP : cellules HeLa,

Informations générales

Protocadherins, which constitute the largest subgroup within the cadherin superfamily, are predominantly expressed in the nervous system and are probably involved in the regulation of neuronal recognition and connectivity (PMID: 17936607; 12231349; 17133224). The protocadherin subfamily can be further subdivided into three groups: the clustered protocadherins, comprising α -, β - and γ -protocadherins; δ -protocadherins; and others, many of which are solitary (PMID: 17133224). PCDHA2 (protocadherin alpha 2) is a single-pass type I membrane protein containing 6 cadherin domains. It may be involved in the establishment and maintenance of specific neuronal connections in the brain. Three isoforms produced by alternative splicing have been described (UniProt).

Stockage

Stockage:

Stocker à -20°C. Stable pendant un an après l'expédition.

Tampon de stockage:

PBS avec azoture de sodium à 0,02 % et glycérol à 50 % pH 7,3

L'aliquotage n'est pas nécessaire pour le stockage à -20C

*** Les 20ul contiennent 0,1% de BSA.

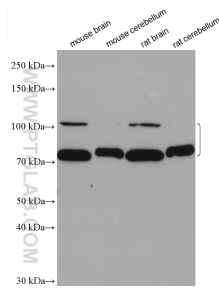
For technical support and original validation data for this product please contact:

T: 1 (888) 4PTGLAB (1-888-478-4522) (toll free
in USA), or 1(312) 455-8498 (outside USA)

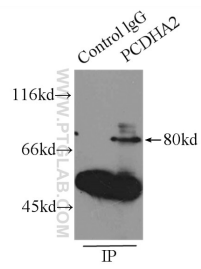
E: proteintech@ptglab.com
W: ptglab.com

This product is exclusively available under Proteintech Group brand and is not available to purchase from any other manufacturer.

Données de validation sélectionnées



Various lysates were subjected to SDS PAGE followed by western blot with 10127-2-AP (PCDHA2 antibody) at dilution of 1:800 incubated at room temperature for 1.5 hours.



IP Result of anti-PCDHA2 (IP:10127-2-AP, 3ug; Detection:10127-2-AP 1:300) with HeLa cells lysate 4650ug.