

À des fins de recherche uniquement

# Anticorps Polyclonal de lapin anti-LSM8



Numéro de catalogue: 10134-1-AP

1 Publications

## Informations de base

Numéro de catalogue: 10134-1-AP	Numéro d'acquisition GenBank: BC002742	Méthode de purification: Purification par affinité contre l'antigène
Taille: 150ul , Concentration: 550 µg/ml by Nanodrop and 300 µg/ml by Bradford method using BSA as the standard;	Identification du gène (NCBI): 51691	Dilutions recommandées: WB 1:200-1:1000 IHC 1:50-1:500 IF 1:50-1:500
Hôte: Lapin	Nom complet: LSM8 homolog, U6 small nuclear RNA associated (S. cerevisiae)	
Isotype: IgG	MW calculé 14 kDa / 75 kDa	
Immunogen Catalog Number: AG0178	MW observés: 11 kDa	

## Applications

Applications testées: IF, IHC, WB, ELISA	Contrôles positifs: WB : cellules HeLa, cellules HL-60 IHC : tissu rénal humain, IF : cellules HeLa,
Demandes citées: WB	
Spécificité de l'espèce: Humain, rat, souris	
Espèces citées: Humain	
<b>Remarque-IHC: il est suggéré de démasquer l'antigène avec un tampon de TE buffer pH 9,0; (*) A défaut, 'le démasquage de l'antigène peut être 'effectué avec un tampon citrate pH 6,0.</b>	

## Informations générales

Sm-like proteins were identified in a variety of organisms based on sequence homology with the Sm protein family. Sm-like proteins contain the Sm sequence motif, which consists of 2 regions separated by a linker of variable length that folds as a loop. The Sm-like proteins are thought to form a stable heteromer present in tri-snRNP particles, which are important for pre-mRNA splicing [PMID:15075370]. Lsm2-Lsm8 (Lsm stands for Like Sm), binds and stabilizes the 3' end of the spliceosomal U6 snRNA. Lsm proteins facilitate the annealing of U6 snRNA with U4 snRNA in vitro and interact with the U4/U6 annealing factor Prp24, suggesting that Lsm proteins function in U4/U6 snRNP formation in vivo [PMID:15485930, 17251193].

## Publications notables

Autrice	Pubmed ID	Journal	Application
Xin Wang	32017896	Mol Cell	WB

## Stockage

Stockage:  
Stocker à -20°C. Stable pendant un an après l'expédition.  
Tampon de stockage:  
PBS avec azote de sodium à 0,02 % et glycérol à 50 % pH 7,3  
L'aliquotage n'est pas nécessaire pour le stockage à -20C

\*\*\* Les 20ul contiennent 0,1% de BSA.

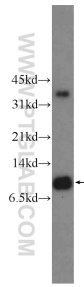
For technical support and original validation data for this product please contact:

T: 1 (888) 4PTGLAB (1-888-478-4522) (toll free in USA), or 1(312) 455-8498 (outside USA)

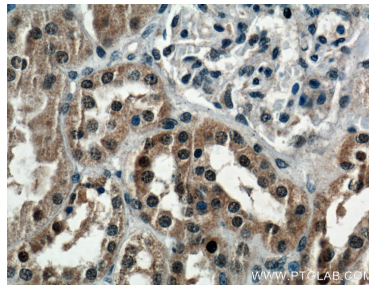
E: proteintech@ptglab.com  
W: ptglab.com

This product is exclusively available under Proteintech Group brand and is not available to purchase from any other manufacturer.

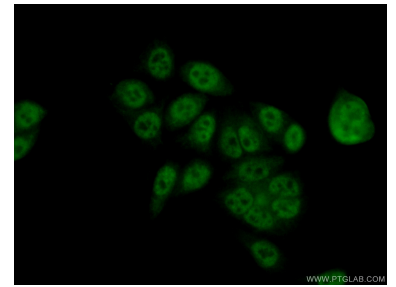
## Données de validation sélectionnées



HeLa cells were subjected to SDS PAGE followed by western blot with 10134-1-AP (LSM8 Antibody) at dilution of 1:300 incubated at room temperature for 1.5 hours.



Immunohistochemical analysis of paraffin-embedded human kidney tissue slide using 10134-1-AP (LSM8 Antibody) at dilution of 1:200 (under 40x lens).



Immunofluorescent analysis of (10% Formaldehyde) fixed HeLa cells using 10134-1-AP (LSM8 antibody) at dilution of 1:50 and Alexa Fluor 488-conjugated AffiniPure Goat Anti-Rabbit IgG(H+L).