

À des fins de recherche uniquement

# Anticorps Polyclonal de lapin anti-Cytokeratin 15



Numéro de catalogue: 10137-1-AP

16 Publications

## Informations de base

Numéro de catalogue:  
10137-1-AP

Taille:  
150ul, Concentration: 750 µg/ml by Nanodrop and 450 µg/ml by Bradford method using BSA as the standard;

Hôte:  
Lapin

Isotype:  
IgG

Immunogen Catalog Number:  
AG0185

Numéro d'acquisition GenBank:  
BC002641

Identification du gène (NCBI):  
3866

Nom complet:  
keratin 15

MW calculé  
49 kDa

MW observés:  
49 kDa

Méthode de purification:  
Purification par affinité contre l'antigène

Dilutions recommandées:  
WB 1:2000-1:10000  
IP 0.5-4.0 ug for IP and 1:500-1:1000 for WB  
IHC 1:400-1:1600

## Applications

Applications testées:  
FC, IHC, IP, WB, ELISA

Demandes citées:  
IF, IHC, WB

Spécificité de l'espèce:  
Humain, rat, souris

Espèces citées:  
Humain, rat, souris

**Remarque-IHC: il est suggéré de démasquer l'antigène avec un tampon de TE buffer pH 9,0; (\*) A défaut, 'le démasquage de l'antigène peut être effectué avec un tampon citrate pH 6,0.**

Contrôles positifs:

WB : cellules A431, cellules HeLa, cellules PC-3, tissu de thymus de souris

IP : cellules A431,

IHC : tissu de cancer du col de l'utérus humain, tissu de cancer de l'œsophage humain, tissu de cancer du sein humain

## Informations générales

Keratins are a large family of proteins that form the intermediate filament cytoskeleton of epithelial cells, which are classified into two major sequence types. Type I keratins are a group of acidic intermediate filament proteins, including K9-K23, and the hair keratins Ha1-Ha8. Type II keratins are the basic or neutral counterparts to the acidic type I keratins, including K1-K8, and the hair keratins, Hb1-Hb6. Keratin 15 is a type I cytokeratin. It is found in some progenitor basal cells within complex epithelia.

## Publications notables

Autrice	Pubmed ID	Journal	Application
Zhang W W	18958303	Mol Vis	IHC
Ximeng Kang	36073016	Biomater Sci	IHC
Shaoheng Xiong	35685420	Front Med (Lausanne)	WB,IF

## Stockage

Stockage:

Stocker à -20°C. Stable pendant un an après l'expédition.

Tampon de stockage:

PBS avec azoture de sodium à 0,02 % et glycérol à 50 % pH 7,3

L'aliquotage n'est pas nécessaire pour le stockage à -20C

\*\*\* Les 20ul contiennent 0,1% de BSA.

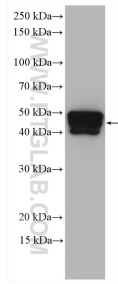
For technical support and original validation data for this product please contact:

T: 1 (888) 4PTGLAB (1-888-478-4522) (toll free in USA), or 1(312) 455-8498 (outside USA)

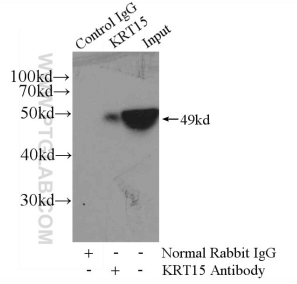
E: proteintech@ptglab.com  
W: ptglab.com

This product is exclusively available under Proteintech Group brand and is not available to purchase from any other manufacturer.

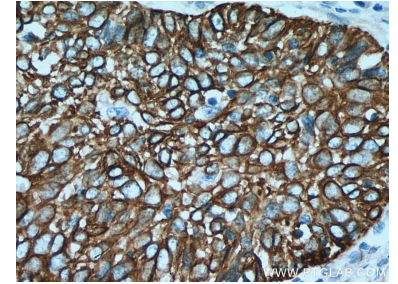
## Données de validation sélectionnées



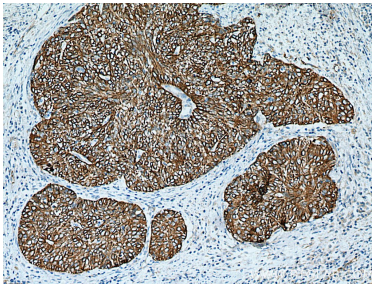
A431 cells were subjected to SDS PAGE followed by western blot with 10137-1-AP (Cytokeratin 15 antibody) at dilution of 1:5000 incubated at room temperature for 1.5 hours.



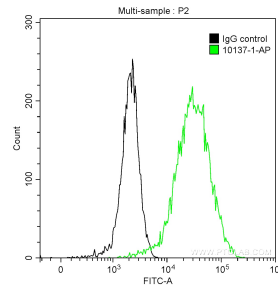
IP Result of anti-Cytokeratin 15 (IP:10137-1-AP, 4ug; Detection:10137-1-AP 1:500) with A431 cells lysate 3040ug.



Immunohistochemical analysis of paraffin-embedded human cervical cancer tissue slide using 10137-1-AP (Cytokeratin 15 antibody) at dilution of 1:800 (under 40x lens). Heat mediated antigen retrieval with Tris-EDTA buffer (pH 9.0).



Immunohistochemical analysis of paraffin-embedded human cervical cancer tissue slide using 10137-1-AP (Cytokeratin 15 antibody) at dilution of 1:800 (under 10x lens). Heat mediated antigen retrieval with Tris-EDTA buffer (pH 9.0).



$1 \times 10^6$  A431 cells were intracellularly stained with 0.2 ug Anti-Human Cytokeratin 15 (10137-1-AP) and CoraLite® 488-Conjugated AffiniPure Goat Anti-Rabbit IgG(H+L) at dilution 1:1000 (green), and 0.2 ug Control Antibody. Cells were fixed with 90% MeOH.