

À des fins de recherche uniquement

Anticorps Polyclonal de lapin anti-PPP1CB-Specific



Numéro de catalogue: 10140-2-AP

3 Publications

Informations de base

Numéro de catalogue:
10140-2-AP

Taille:
150ul, Concentration: 750 µg/ml by Nanodrop and 333 µg/ml by Bradford method using BSA as the standard;

Hôte:
Lapin

Isotype:
IgG

Immunogen Catalog Number:
AG0183

Numéro d'acquisition GenBank:
BC002697

Identification du gène (NCBI):
5500

Nom complet:
protein phosphatase 1, catalytic subunit, beta isoform

MW calculé:
37 kDa

MW observés:
37 kDa

Méthode de purification:
Purification par affinité contre l'antigène

Dilutions recommandées:
WB 1:500-1:2000
IP 0.5-4.0 ug for IP and 1:500-1:2000 for WB
IHC 1:20-1:200
IF 1:20-1:200

Applications

Applications testées:
IF, IHC, IP, WB, ELISA

Demandes citées:
IHC, IP, WB

Spécificité de l'espèce:
Humain, rat, souris

Espèces citées:
Humain, rat

Remarque-IHC: il est suggéré de démasquer l'antigène avec un tampon de TE buffer pH 9,0; (*) A défaut, 'le démasquage de l'antigène peut être 'effectué avec un tampon citrate pH 6,0.

Contrôles positifs:

WB : tissu cérébral humain, NIH/3T3

IP : tissu cérébral de souris,

IHC : tissu de cancer de la prostate humain,

IF : cellules NIH/3T3,

Informations générales

Protein phosphatase 1 (PP1) is the main eukaryotic protein serine/threonine phosphatase that regulates an enormous variety of cellular processes including protein-protein interactions, gene transcription, cell-cycle progression and apoptosis. It is a trimeric complex composed of a regulatory subunit, a variable subunit and a catalytic subunit. The catalytic subunit of PP1 (PP1c) can interact with amount of regulatory subunits in vivo that target it to particular subcellular locations and regulate its activity towards specific substrates. PPP1CB migrated as a 37kd protein on SDS page. This antibody is specific to PPP1CB.

Publications notables

Autrice	Pubmed ID	Journal	Application
Ru-Jia Liao	25224648	Clin Exp Pharmacol Physiol	WB, IP
Chao Huang	24196533	Am J Physiol Cell Physiol	WB
Sun Daxin D	21566537	Melanoma Res	WB, IHC

Stockage

Stockage:

Stocker à -20°C. Stable pendant un an après l'expédition.

Tampon de stockage:

PBS avec azoture de sodium à 0,02 % et glycérol à 50 % pH 7,3

L'aliquotage n'est pas nécessaire pour le stockage à -20C

*** Les 20ul contiennent 0,1% de BSA.

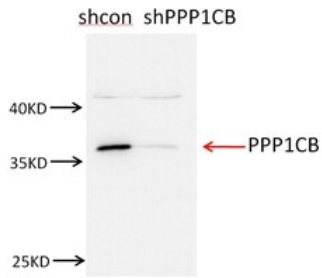
For technical support and original validation data for this product please contact:

T: 1 (888) 4PTGLAB (1-888-478-4522) (toll free in USA), or 1(312) 455-8498 (outside USA)

E: proteintech@ptglab.com
W: ptglab.com

This product is exclusively available under Proteintech Group brand and is not available to purchase from any other manufacturer.

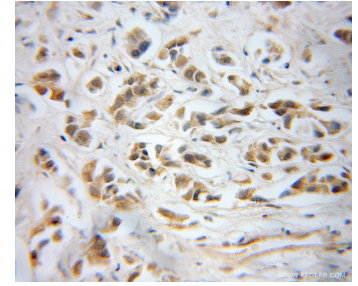
Données de validation sélectionnées



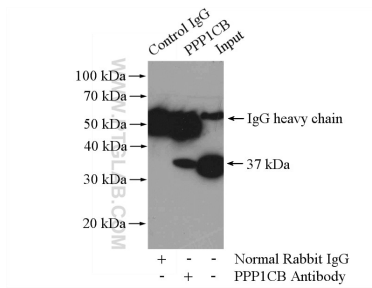
NIH3T3 cells were subjected to SDS PAGE followed by western blot with 10140-2-AP (PPP1CB-Specific antibody) at dilution of 1:1500.



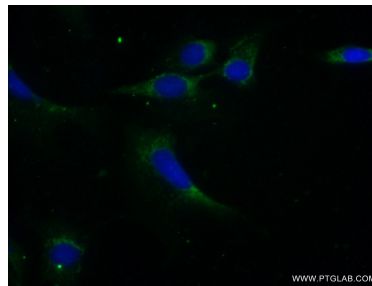
human brain tissue were subjected to SDS PAGE followed by western blot with 10140-2-AP (PPP1CB-Specific antibody) at dilution of 1:1500 incubated at room temperature for 1.5 hours.



Immunohistochemical analysis of paraffin-embedded human prostate cancer using 10140-2-AP (PPP1CB-Specific antibody) at dilution of 1:50 (under 40x lens).



IP Result of anti-PPP1CB-Specific (IP:10140-2-AP, 4ug; Detection:10140-2-AP 1:1000) with mouse brain tissue lysate 4000ug.



Immunofluorescent analysis of (-20°C Ethanol) fixed NIH/3T3 cells using 10140-2-AP (PPP1CB-Specific antibody) at dilution of 1:50 and Alexa Fluor 488-conjugated AffiniPure Goat Anti-Rabbit IgG(H+L).