

À des fins de recherche uniquement

Anticorps Polyclonal de lapin anti-STAT1



Numéro de catalogue: 10144-2-AP

Phare

103 Publications

Informations de base

Numéro de catalogue:
10144-2-AP

Taille:
150ul, Concentration: 700 µg/ml by
Nanodrop;

Hôte:
Lapin

Isotype:
IgG

Immunogen Catalog Number:
AG0199

Numéro d'acquisition GenBank:
BC002704

Identification du gène (NCBI):
6772

Nom complet:
signal transducer and activator of
transcription 1, 91kDa

MW calculé
83 kDa

MW observés:
84 kDa

Méthode de purification:
Purification par affinité contre
l'antigène

Dilutions recommandées:
WB 1:2000-1:10000
IP 0.5-4.0 ug for IP and 1:500-1:1000
for WB
IF 1:50-1:500

Applications

Applications testées:
FC, IF, IP, WB, ELISA

Demandes citées:
ChIP, CoIP, IF, IHC, IP, WB

Spécificité de l'espèce:
Humain

Espèces citées:
Humain, rat, souris

Contrôles positifs:

WB : cellules A431, cellules A549, cellules HEK-293,
cellules HepG2, cellules K-562, cellules PC-3, multi-
cellules

IP : cellules PC-3,

IF : cellules PC-3,

Informations générales

STAT1 (signal transducers and activators of transcription 1) is a member of the STAT protein family. In response to cytokines and growth factors, STAT family members are phosphorylated by the receptor associated kinases, and then form homo- or heterodimers that translocate to the cell nucleus where they act as transcription activators. Various ligands, including interferons- and -, EGF, PDGF and IL-6, can activate STAT1. STAT1 protein mediates the expression of a variety of genes, which is thought to be important for cell viability in response to different cell stimuli and pathogens. This antibody is a rabbit polyclonal antibody raised against residues near the N terminus of human STAT1.

Publications notables

Autrice	Pubmed ID	Journal	Application
Xin Wen	36249018	Front Oncol	WB
Lin Deng	36170649	J Med Chem	WB
Bin Zhang	32964498	Neurochem Res	WB,IHC

Stockage

Stockage:

Stocker à -20°C. Stable pendant un an après l'expédition.

Tampon de stockage:

PBS avec azoture de sodium à 0,02 % et glycérol à 50 % pH 7,3

L'aliquotage n'est pas nécessaire pour le stockage à -20C

*** Les 20ul contiennent 0,1% de BSA.

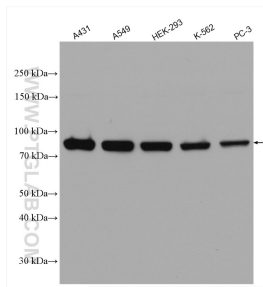
For technical support and original validation data for this product please contact:

T: 1 (888) 4PTGLAB (1-888-478-4522) (toll free
in USA), or 1(312) 455-8498 (outside USA)

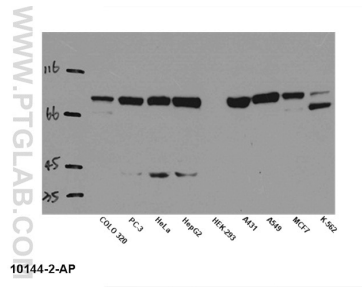
E: proteintech@ptglab.com
W: ptglab.com

This product is exclusively available under Proteintech Group brand and is not available to purchase from any other manufacturer.

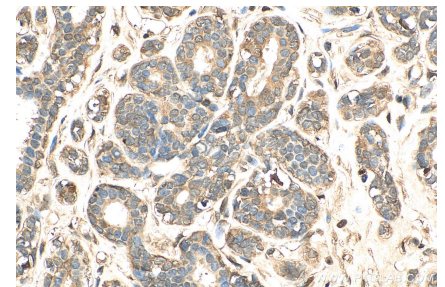
Données de validation sélectionnées



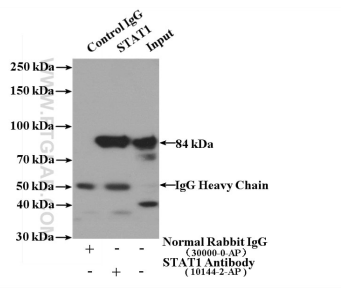
Various lysates were subjected to SDS PAGE followed by western blot with 10144-2-AP (STAT1 antibody) at dilution of 1:5000 incubated at room temperature for 1.5 hours.



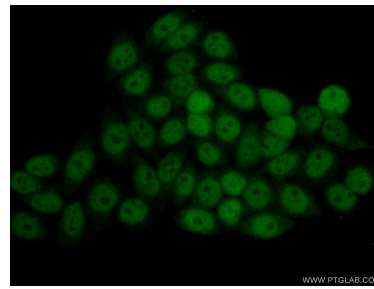
WB result of anti-STAT1 (10144-2-AP) in different cells lysates.



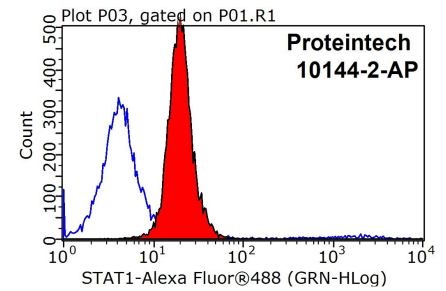
Immunohistochemical analysis of paraffin-embedded human breast cancer tissue slide using 10144-2-AP (STAT1 antibody) at dilution of 1:200 (under 40x lens). Heat mediated antigen retrieval with Tris-EDTA buffer (pH 9.0).



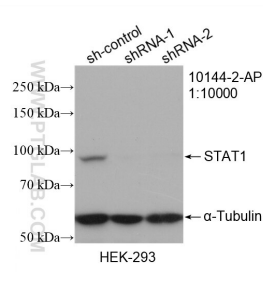
IP Result of anti-STAT1 (IP:10144-2-AP, 4ug; Detection:10144-2-AP 1:500) with PC-3 cells lysate 3200ug.



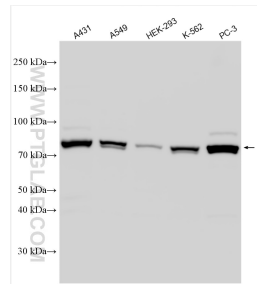
Immunofluorescent analysis of (10% Formaldehyde) fixed PC-3 cells using 10144-2-AP (STAT1 antibody) at dilution of 1:50 and Alexa Fluor 488-conjugated AffiniPure Goat Anti-Rabbit IgG(H+L).



1X10⁶ MCF-7 cells were stained with 0.2ug STAT1 antibody (10144-2-AP, red) and control antibody (blue). Fixed with 90% MeOH blocked with 3% BSA (30 min). Alexa Fluor 488-conjugated AffiniPure Goat Anti-Rabbit IgG(H+L) with dilution 1:1000.



WB result of STAT1 antibody (10144-2-AP; 1:10000; incubated at room temperature for 1.5 hours) with sh-Control and sh-STAT1 transfected HEK-293 cells.



Various lysates were subjected to SDS PAGE followed by western blot with 10144-2-AP (STAT1 antibody) at dilution of 1:10000 incubated at room temperature for 1.5 hours.