

À des fins de recherche uniquement

Anticorps Polyclonal de lapin anti-tPA



Numéro de catalogue: 10147-1-AP

Phare

19 Publications

Informations de base

Numéro de catalogue:
10147-1-AP

Taille:
150ul, Concentration: 400 µg/ml by
Nanodrop;

Hôte:
Lapin

Isotype:
IgG

Immunogen Catalog Number:
AG0200

Numéro d'acquisition GenBank:
BC002795

Identification du gène (NCBI):
5327

Nom complet:
plasminogen activator, tissue

MW calculé
57 kDa

MW observés:
32-35 kDa, 65 kDa

Méthode de purification:
Purification par affinité contre
l'antigène

Dilutions recommandées:
WB 1:500-1:3000
IP 0.5-4.0 ug for IP and 1:500-1:2000
for WB
IF 1:50-1:500

Applications

Applications testées:
IF, IP, WB, ELISA

Demandes citées:
IF, IHC, WB

Spécificité de l'espèce:
Humain, rat, souris

Espèces citées:
Humain, rat, souris

Contrôles positifs:

WB : tissu rénal de souris, tissu pancréatique de souris,
tissu rénal de rat

IP : tissu rénal de souris,

IF : tissu cérébral de souris,

Informations générales

Plasminogen activator, tissue (PLAT, synonyms: TPA, T-PA) is a tissue-type plasminogen activator, a secreted serine protease which converts the proenzyme plasminogen to plasmin, a fibrinolytic enzyme. Tissue-type plasminogen activator is synthesized as a single chain which is cleaved by plasmin to a two chain disulfide linked protein (33 kDa and 32 kDa). PLAT enzyme plays a role in cell migration and tissue remodeling. Increased enzymatic activity causes hyperfibrinolysis, which manifests as excessive bleeding; decreased activity leads to hypofibrinolysis which can result in thrombosis or embolism. tPA has 4 isoforms produced by alternative splicing with the MW of 63 kDa, 33 kDa, 57 kDa and 44 kDa.

Publications notables

Autrice	Pubmed ID	Journal	Application
Ling Chen	31550972	Cell Cycle	IF
Hui Tang	33330033	Front Oncol	WB
Dongsheng Sun	29157906	Int J Biol Macromol	WB

Stockage

Stockage:

Stocker à -20°C. Stable pendant un an après l'expédition.

Tampon de stockage:

PBS avec azoture de sodium à 0,02 % et glycérol à 50 % pH 7,3

L'aliquotage n'est pas nécessaire pour le stockage à -20C

*** Les 20ul contiennent 0,1% de BSA.

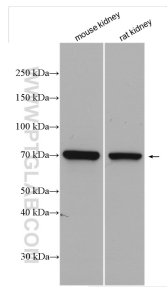
For technical support and original validation data for this product please contact:

T: 1 (888) 4PTGLAB (1-888-478-4522) (toll free
in USA), or 1(312) 455-8498 (outside USA)

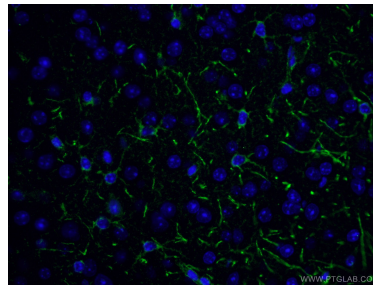
E: proteintech@ptglab.com
W: ptglab.com

This product is exclusively available under Proteintech Group brand and is not available to purchase from any other manufacturer.

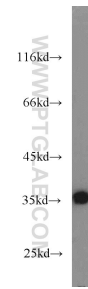
Données de validation sélectionnées



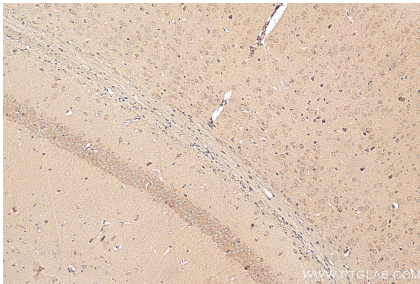
Various lysates were subjected to SDS PAGE followed by western blot with 10147-1-AP (tPA antibody) at dilution of 1:1500 incubated at room temperature for 1.5 hours.



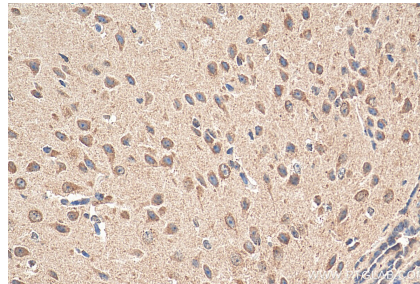
Immunofluorescent analysis of (4% PFA) fixed mouse brain tissue using 10147-1-AP (tPA antibody) at dilution of 1:50 and Alexa Fluor 488-Conjugated AffiniPure Goat Anti-Rabbit IgG(H+L).



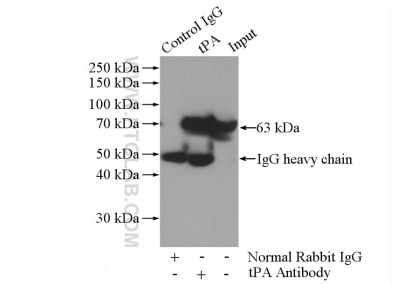
mouse pancreas tissue were subjected to SDS PAGE followed by western blot with 10147-1-AP (tPA antibody) at dilution of 1:1000 incubated at room temperature for 1.5 hours.



Immunohistochemical analysis of paraffin-embedded mouse brain tissue slide using 10147-1-AP (tPA antibody) at dilution of 1:200 (under 10x lens). Heat mediated antigen retrieval with Tris-EDTA buffer (pH 9.0).



Immunohistochemical analysis of paraffin-embedded mouse brain tissue slide using 10147-1-AP (tPA antibody) at dilution of 1:200 (under 40x lens). Heat mediated antigen retrieval with Tris-EDTA buffer (pH 9.0).



IP Result of anti-tPA (IP:10147-1-AP, 3ug; Detection:10147-1-AP 1:1000) with mouse kidney tissue lysate 4000ug.