

À des fins de recherche uniquement

Anticorps Polyclonal de lapin anti-GNAS



Numéro de catalogue: 10150-2-AP

Phare

5 Publications

Informations de base

Numéro de catalogue:

10150-2-AP

Taille:

150ul, Concentration: 400 µg/ml by Nanodrop;

Hôte:

Lapin

Isotype:

IgG

Immunogen Catalog Number:

AG0197

Numéro d'acquisition GenBank:

BC002722

Identification du gène (NCBI):

2778

Nom complet:

GNAS complex locus

MW calculé

45 kDa

MW observés:

46 kDa

Méthode de purification:

Purification par affinité contre l'antigène

Dilutions recommandées:

WB 1:2000-1:12000

IP 0.5-4.0 ug for IP and 1:200-1:1000 for WB

IHC 1:200-1:800

IF 1:50-1:500

Applications

Applications testées:

IF, IHC, IP, WB, ELISA

Demandes citées:

IF, WB

Spécificité de l'espèce:

Humain, rat, souris

Espèces citées:

Humain, souris

Remarque-IHC: il est suggéré de démasquer l'antigène avec un tampon de TE buffer pH 9,0; (*) À défaut, le démasquage de l'antigène peut être effectué avec un tampon citrate pH 6,0.

Contrôles positifs:

WB : cellules Jurkat, cellules HepG2, cellules MCF-7, tissu cérébral de rat, tissu cérébral de souris, tissu hépatique de rat, tissu hépatique de souris

IP : tissu hépatique de souris,

IHC : tissu cérébral de souris, tissu de côlon humain, tissu pancréatique humain

IF : cellules HeLa,

Informations générales

Guanine nucleotide binding protein (G protein), alpha stimulating activity polypeptide 1 (GNAS1) is the ubiquitously expressed heterotrimeric G protein that couples receptors to the effector enzyme adenylyl cyclase and is required for receptor-stimulated intracellular cAMP generation. Mutations of Gs(alpha) residues involved in the GTPase reaction that lead to constitutive activation are present in endocrine tumors, fibrous dysplasia of bone, and McCune-Albright syndrome. The molecular weight of Gs(alpha) protein is about 46 kDa.

Publications notables

Autrice	Pubmed ID	Journal	Application
Gemoll Timo T	21290163	Cell Mol Life Sci	WB
Hongda Ding	32123532	Cell Mol Biol Lett	WB,IF
Lele Liu	32036696	Am J Physiol Renal Physiol	WB,IF

Stockage

Stockage:

Stocker à -20°C. Stable pendant un an après l'expédition.

Tampon de stockage:

PBS avec azotate de sodium à 0,02 % et glycérol à 50 % pH 7,3

L'aliquotage n'est pas nécessaire pour le stockage à -20C

*** Les 20ul contiennent 0,1% de BSA.

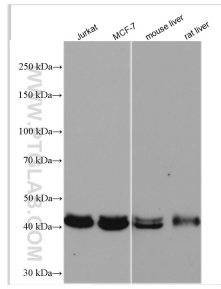
For technical support and original validation data for this product please contact:

T: 1 (888) 4PTGLAB (1-888-478-4522) (toll free in USA), or 1(312) 455-8498 (outside USA)

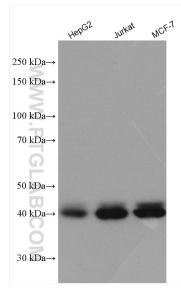
E: proteintech@ptglab.com
W: ptglab.com

This product is exclusively available under Proteintech Group brand and is not available to purchase from any other manufacturer.

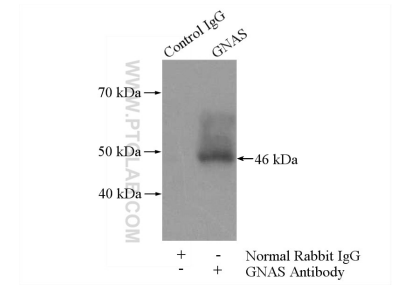
Données de validation sélectionnées



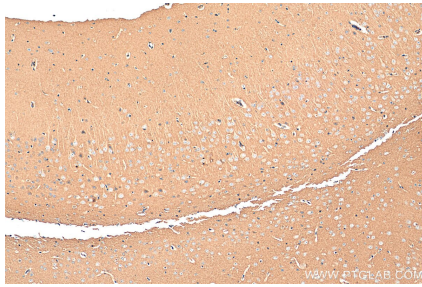
Various lysates were subjected to SDS PAGE followed by western blot with 10150-2-AP (GNAS antibody) at dilution of 1:6000 incubated at room temperature for 1.5 hours.



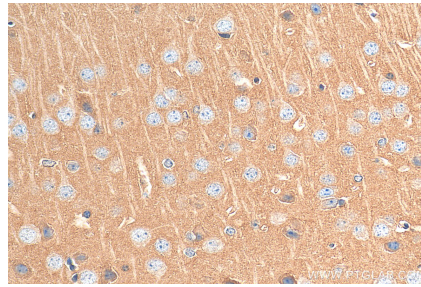
HepG2 cells were subjected to SDS PAGE followed by western blot with 10150-2-AP (GNAS antibody) at dilution of 1:10000 incubated at room temperature for 1.5 hours.



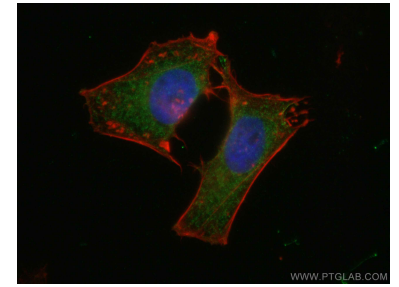
IP Result of anti-GNAS (IP:10150-2-AP, 4ug; Detection:10150-2-AP 1:300) with mouse liver tissue lysate 4000ug.



Immunohistochemical analysis of paraffin-embedded mouse brain tissue slide using 10150-2-AP (GNAS antibody) at dilution of 1:400 (under 10x lens). Heat mediated antigen retrieval with Tris-EDTA buffer (pH 9.0).



Immunohistochemical analysis of paraffin-embedded mouse brain tissue slide using 10150-2-AP (GNAS antibody) at dilution of 1:400 (under 40x lens). Heat mediated antigen retrieval with Tris-EDTA buffer (pH 9.0).



Immunofluorescent analysis of (4% PFA) fixed HeLa cells using GNAS antibody (10150-2-AP) at dilution of 1:200 and CoraLite@488-Conjugated AffiniPure Goat Anti-Rabbit IgG(H+L), 594-phalloidine (red).