

À des fins de recherche uniquement

Anticorps Polyclonal de lapin anti-ACSM3



Numéro de catalogue: 10168-2-AP

Phare

6 Publications

Informations de base

Numéro de catalogue: 10168-2-AP	Numéro d'acquisition GenBank: BC002790	Méthode de purification: Purification par affinité contre l'antigène
Taille: 150ul, Concentration: 300 µg/ml by Nanodrop and 167 µg/ml by Bradford method using BSA as the standard;	Identification du gène (NCBI): 6296	Dilutions recommandées: WB 1:500-1:1000 IHC 1:20-1:200 IF 1:10-1:100
Hôte: Lapin	Nom complet: acyl-CoA synthetase medium-chain family member 3	
Isotype: IgG	MW calculé: 49 kDa, 66 kDa	
Immunogen Catalog Number: AG0224	MW observés: 60-70 kDa	

Applications

Applications testées:
FC, IF, IHC, WB, ELISA

Demandes citées:
IF, IHC, WB

Spécificité de l'espèce:
Humain, rat, souris

Espèces citées:
Humain, souris

Remarque-IHC: il est suggéré de démasquer l'antigène avec un tampon de TE buffer pH 9,0; (*) A défaut, 'le démasquage de l'antigène peut être effectué avec un tampon citrate pH 6,0.

Contrôles positifs:

WB : cellules HEK-293, tissu rénal de souris

IHC : tissu rénal humain, tissu de cancer de la prostate humaine

IF : cellules HepG2,

Informations générales

SA hypertension-associated rat homolog (SAH, synonym: SA) is expressed at 10-fold greater levels in the kidney of the spontaneously hypertensive rat than in the corresponding wild-type strain. The gene is linked to blood pressure levels in a number of crosses involving the spontaneously hypertensive rat and other strains of genetically hypertensive rats. Human SAH gene polymorphism may be associated with the renal prognosis of immunoglobulin A nephropathy through its effect on blood pressure. Furthermore, variation in SAH has a role in predisposition.

Publications notables

Autrice	Pubmed ID	Journal	Application
Paul Dowling	31776009	Eur J Cell Biol	WB, IF
Limei Yan	33869039	Front Oncol	WB, IHC
Lingyun Zhang	34322485	Front Cell Dev Biol	IHC

Stockage

Stockage:

Stocker à -20°C. Stable pendant un an après l'expédition.

Tampon de stockage:

PBS avec azoture de sodium à 0,02 % et glycérol à 50 % pH 7,3

L'aliquotage n'est pas nécessaire pour le stockage à -20C

*** Les 20ul contiennent 0,1% de BSA.

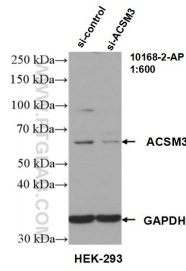
For technical support and original validation data for this product please contact:

T: 1 (888) 4PTGLAB (1-888-478-4522) (toll free in USA), or 1(312) 455-8498 (outside USA)

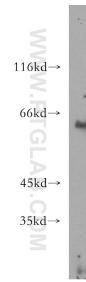
E: proteintech@ptglab.com
W: ptglab.com

This product is exclusively available under Proteintech Group brand and is not available to purchase from any other manufacturer.

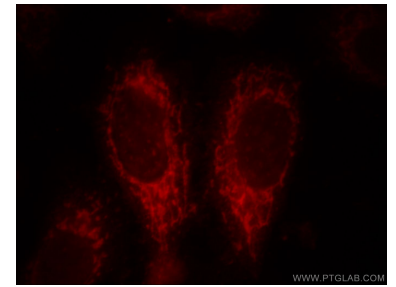
Données de validation sélectionnées



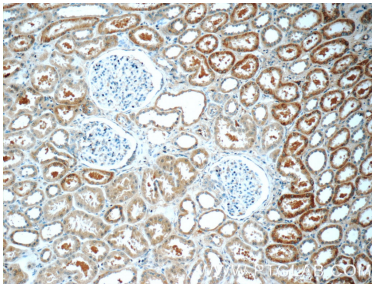
WB result of ACSM3 antibody (10168-2-AP; 1:600; incubated at room temperature for 1.5 hours) with sh-Control and sh-ACSM3 transfected HEK-293 cells.



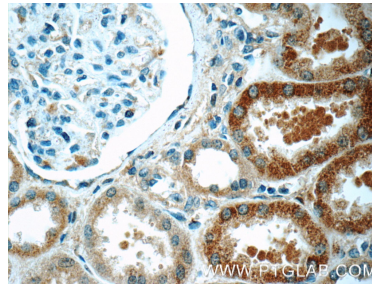
HEK-293 cells were subjected to SDS PAGE followed by western blot with 10168-2-AP (ACSM3 antibody) at dilution of 1:500 incubated at room temperature for 1.5 hours.



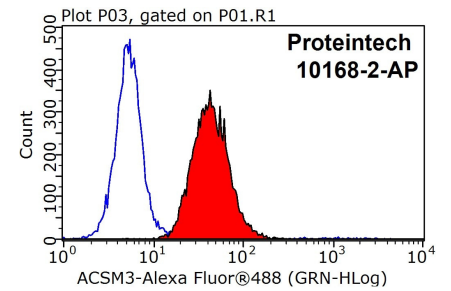
Immunofluorescent analysis of HepG2 cells, using ACSM3 antibody 10168-2-AP at 1:25 dilution and Rhodamine-labeled goat anti-rabbit IgG (red).



Immunohistochemical analysis of paraffin-embedded human kidney tissue slide using 10168-2-AP (ACSM3 Antibody) at dilution of 1:50 (under 10x lens).



Immunohistochemical analysis of paraffin-embedded human kidney tissue slide using 10168-2-AP (ACSM3 Antibody) at dilution of 1:50 (under 40x lens).



1×10^6 HepG2 cells were stained with 0.2ug ACSM3 antibody (10168-2-AP, red) and control antibody (blue). Fixed with 90% MeOH blocked with 3% BSA (30 min). Alexa Fluor 488-conjugated AffiniPure Goat Anti-Rabbit IgG(H+L) with dilution 1:1000.