

À des fins de recherche uniquement

# Anticorps Polyclonal de lapin anti-ATG5



Numéro de catalogue: 10181-2-AP

Phare

233 Publications

## Informations de base

Numéro de catalogue:

10181-2-AP

Taille:

150ul, Concentration: 650 µg/ml by Nanodrop;

Hôte:

Lapin

Isotype:

IgG

Immunogen Catalog Number:

AG0214

Numéro d'acquisition GenBank:

BC002699

Identification du gène (NCBI):

9474

Nom complet:

ATG5 autophagy related 5 homolog (S. cerevisiae)

MW calculé

32 kDa

MW observés:

32 kDa, 40-45 kDa, 50-55 kDa

Méthode de purification:

Purification par affinité contre l'antigène

Dilutions recommandées:

WB 1:1000-1:5000

IP 0.5-4.0 µg for IP and 1:1000-1:6000 for WB

IHC 1:50-1:500

## Applications

Applications testées:

IHC, IP, WB, ELISA

Demandes citées:

FC, IF, IHC, WB

Spécificité de l'espèce:

Humain, rat, souris

Espèces citées:

bovin, Humain, porc, poulet, rat, singe, souris, mérou

**Remarque-IHC: il est suggéré de démasquer l'antigène avec un tampon de TE buffer pH 9,0; (\*) À défaut, le démasquage de l'antigène peut être effectué avec un tampon citrate pH 6,0.**

Contrôles positifs:

WB : cellules A549, cellules HeLa, cellules HepG2, tissu rénal de souris

IP : cellules HeLa,

IHC : tissu de cancer du côlon humain, tissu de gliome humain

## Informations générales

ATG5, also named as APG5L and ASP, belongs to the ATG5 family. It is required for autophagy. It plays an important role in the apoptotic process, possibly within the modified cytoskeleton. Its expression is a relatively late event in the apoptotic process, occurring downstream of caspase activity. Autophagy is a catabolic process for the autophagosomic-lysosomal degradation of bulk cytoplasmic contents. Formation of the autophagosome involves a ubiquitin-like conjugation system in which Atg12 is covalently bound to Atg5 and targeted to autophagosome vesicles. It mediates autophagosome-independent host protection. This antibody is raised against 28-275 amino acids of human ATG5. It can recognize the ATG5-ATG12 complex (55 kDa) which can be truncated and generate a 40-45 kDa band. 10181-2-AP also recognizes the free ATG5 (32 kDa).

## Publications notables

Autrice	Pubmed ID	Journal	Application
Zeen Zhu	36248959	Front Oncol	WB
Samana Batool	30274346	Int J Mol Sci	WB
Jiawei Hao	36126167	Autophagy	WB

## Stockage

Stockage:

Stocker à -20°C. Stable pendant un an après l'expédition.

Tampon de stockage:

PBS avec azoture de sodium à 0,02 % et glycérol à 50 % pH 7,3

L'aliquotage n'est pas nécessaire pour le stockage à -20C

\*\*\* Les 20ul contiennent 0,1% de BSA.

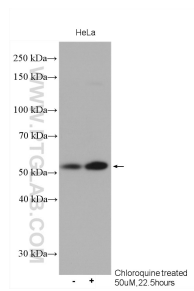
For technical support and original validation data for this product please contact:

T: 1 (888) 4PTGLAB (1-888-478-4522) (toll free in USA), or 1(312) 455-8498 (outside USA)

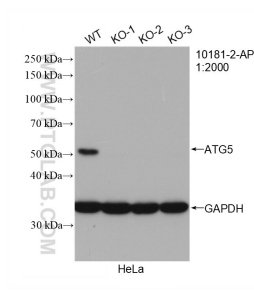
E: proteintech@ptglab.com  
W: ptglab.com

This product is exclusively available under Proteintech Group brand and is not available to purchase from any other manufacturer.

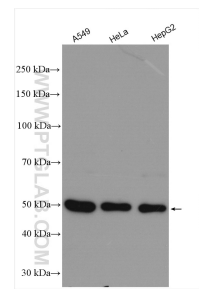
## Données de validation sélectionnées



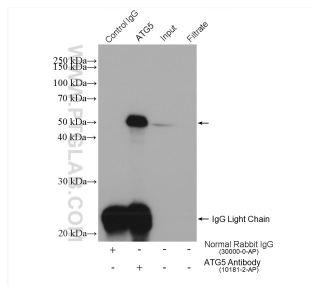
HeLa cells were subjected to SDS PAGE followed by western blot with 10181-2-AP (ATG5 antibody) at dilution of 1:500 incubated at room temperature for 1.5 hours.



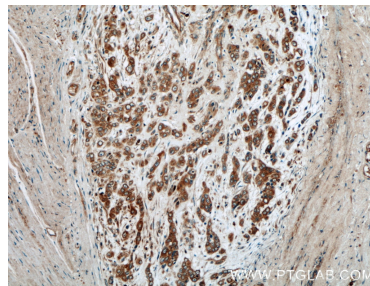
WB result of ATG5 antibody (10181-2-AP; 1:2000; room temperature for 1.5 hours) with wild-type and ATG5 knockout HeLa cells.



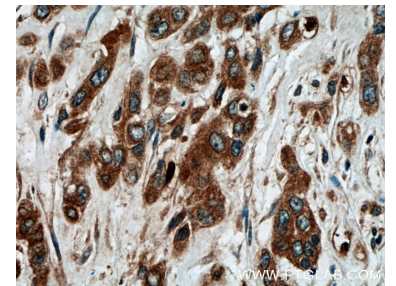
Various lysates were subjected to SDS PAGE followed by western blot with 10181-2-AP (ATG5 antibody) at dilution of 1:2500 incubated at room temperature for 1.5 hours.



IP result of anti-ATG5(IP:10181-2-AP, 4ug; Detection:10181-2-AP 1:3000) with HeLa cells lysate 1760 ug.



Immunohistochemical analysis of paraffin-embedded human colon cancer tissue slide using 10181-2-AP (ATG5 antibody) at dilution of 1:200 (under 10x lens).



Immunohistochemical analysis of paraffin-embedded human colon cancer tissue slide using 10181-2-AP (ATG5 antibody) at dilution of 1:200 (under 40x lens).