

À des fins de recherche uniquement

Anticorps Polyclonal de lapin anti-RAB6A



Numéro de catalogue: 10187-2-AP

Phare

5 Publications

Informations de base

Numéro de catalogue:

10187-2-AP

Taille:

150ul, Concentration: 350 µg/ml by Nanodrop;

Hôte:

Lapin

Isotype:

IgG

Immunogen Catalog Number:

AG0240

Numéro d'acquisition GenBank:

BC003617

Identification du gène (NCBI):

5870

Nom complet:

RAB6A, member RAS oncogene family

MW calculé

24 kDa

MW observés:

24 kDa

Méthode de purification:

Purification par affinité contre l'antigène

Dilutions recommandées:

WB 1:2000-1:16000

IP 0.5-4.0 ug for IP and 1:500-1:1000 for WB

IF 1:400-1:1600

Applications

Applications testées:

IF, IP, WB, ELISA

Demandes citées:

IF, WB

Spécificité de l'espèce:

Humain, rat, souris

Espèces citées:

Humain, rat, souris

Contrôles positifs:

WB : cellules NIH/3T3, tissu cérébral de rat, tissu cérébral de souris

IP : tissu cérébral de souris,

IF : cellules HeLa,

Informations générales

Members of the Rab subfamily of small GTPases play an important role in the regulation of intracellular transport routes. Rab6, localized to the Golgi apparatus, has been shown to be a regulator of membrane traffic from the Golgi apparatus towards the endoplasmic reticulum (ER). The expression of Rab6 is ubiquitous.

Publications notables

Autrice	Pubmed ID	Journal	Application
Xiaochao Tan	32931483	J Clin Invest	WB
Liyuan Guo	34332492	J Neuroimmunol	IF
Xinxin Zuo	33398173	Nat Struct Mol Biol	WB

Stockage

Stockage:

Stocker à -20°C. Stable pendant un an après l'expédition.

Tampon de stockage:

PBS avec azoture de sodium à 0,02 % et glycérol à 50 % pH 7,3

L'aliquotage n'est pas nécessaire pour le stockage à -20C

*** Les 20ul contiennent 0,1% de BSA.

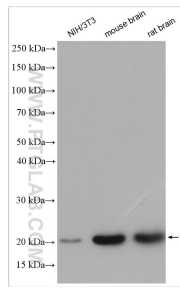
For technical support and original validation data for this product please contact:

T: 1 (888) 4PTGLAB (1-888-478-4522) (toll free in USA), or 1(312) 455-8498 (outside USA)

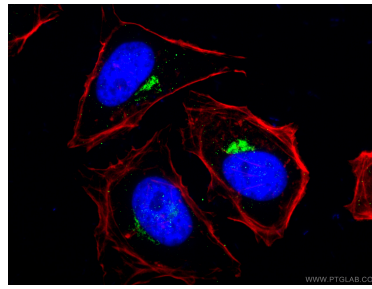
E: proteintech@ptglab.com
W: ptglab.com

This product is exclusively available under Proteintech Group brand and is not available to purchase from any other manufacturer.

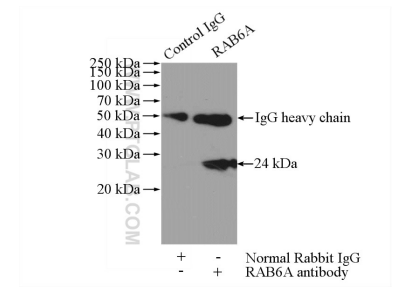
Données de validation sélectionnées



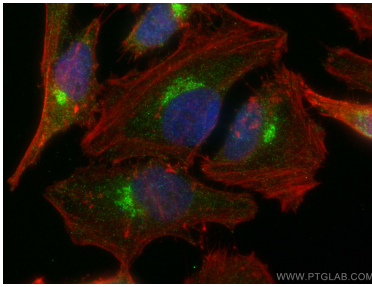
Various lysates were subjected to SDS PAGE followed by western blot with 10187-2-AP (RAB6A antibody) at dilution of 1:8000 incubated at room temperature for 1.5 hours.



Immunofluorescent analysis of (4% PFA) fixed HeLa cells using 10187-2-AP (RAB6A antibody), at dilution of 1:200 and CoraLite®488-Conjugated AffiniPure Goat Anti-Rabbit IgG(H+L). F-actin is stained using CL555-phalloidin (red) and DNA is stained by DAPI (blue).



IP Result of anti-RAB6A (IP:10187-2-AP, 4ug; Detection:10187-2-AP 1:500) with mouse brain tissue lysate 2640ug.



Immunofluorescent analysis of (4% PFA) fixed HeLa cells using RAB6A antibody (10187-2-AP) at dilution of 1:800 and CoraLite®488-Conjugated AffiniPure Goat Anti-Rabbit IgG(H+L), CL594-phalloidin (red).