

À des fins de recherche uniquement

Anticorps Polyclonal de lapin anti-ECD



Numéro de catalogue: 10192-1-AP

Phare

1 Publications

Informations de base

Numéro de catalogue:

10192-1-AP

Taille:

150ul, Concentration: 400 µg/ml by Nanodrop and 307 µg/ml by Bradford method using BSA as the standard;

Hôte:

Lapin

Isotype:

IgG

Immunogen Catalog Number:

AG0245

Numéro d'acquisition GenBank:

BC000721

Identification du gène (NCBI):

11319

Nom complet:

ecdysoneless homolog (Drosophila)

MW calculé

73 kDa

MW observés:

73 kDa

Méthode de purification:

Purification par affinité contre l'antigène

Dilutions recommandées:

WB 1:500-1:1000

IP 0.5-4.0 ug for IP and 1:200-1:1000 for WB

IF 1:10-1:100

Applications

Applications testées:

IF, IP, WB, ELISA

Demandes citées:

WB

Spécificité de l'espèce:

Humain, souris

Espèces citées:

Humain

Contrôles positifs:

WB : cellules HeLa,

IP : cellules HeLa,

IF : cellules HeLa,

Informations générales

The human suppressor of GCR two (hSGT1) was isolated by its ability to complement the growth defect of the *gcr2* mutant of *Saccharomyces cerevisiae*. Further work confirmed that the rescue of growth was associated with recovery of glycolytic enzyme activities of *gcr2*, and that hSGT1 did not complement the growth defect of a *gcr1* mutant. A hybrid protein comprising hSgt1p and the DNA-binding domain of Gal4p (GBD) activated a GAL1-lacZ reporter gene fusion, suggesting that the cloned gene may be a transcriptional activator. Two-hybrid experiments in yeast also indicate that hSgt1p interacts with Gcr1p. Northern analysis showed that hSGT1 is highly expressed in muscle and heart.

Publications notables

Autrice	Pubmed ID	Journal	Application
Song-Hui Xu	26498357	Oncotarget	WB

Stockage

Stockage:

Stocker à -20°C. Stable pendant un an après l'expédition.

Tampon de stockage:

PBS avec azoture de sodium à 0,02 % et glycérol à 50 % pH 7,3

L'aliquotage n'est pas nécessaire pour le stockage à -20C

*** Les 20ul contiennent 0,1% de BSA.

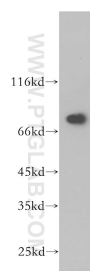
For technical support and original validation data for this product please contact:

T: 1 (888) 4PTGLAB (1-888-478-4522) (toll free in USA), or 1(312) 455-8498 (outside USA)

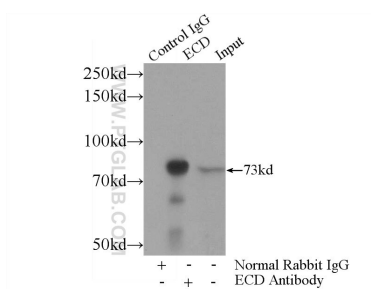
E: proteintech@ptglab.com
W: ptglab.com

This product is exclusively available under Proteintech Group brand and is not available to purchase from any other manufacturer.

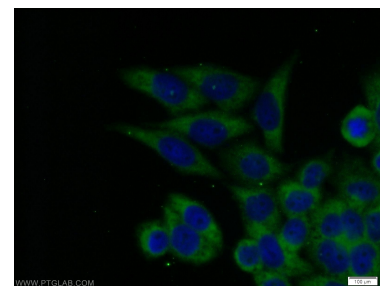
Données de validation sélectionnées



HeLa cells were subjected to SDS PAGE followed by western blot with 10192-1-AP (ECD antibody) at dilution of 1:300 incubated at room temperature for 1.5 hours.



IP Result of anti-ECD (IP:10192-1-AP, 4ug; Detection:10192-1-AP 1:300) with HeLa cells lysate 2480ug.



Immunofluorescent analysis of HeLa cells using 10192-1-AP (ECD antibody) at dilution of 1:25 and Alexa Fluor 488-conjugated AffiniPure Goat Anti-Rabbit IgG(H+L).