

À des fins de recherche uniquement

# Anticorps Polyclonal de lapin anti-WTAP



Numéro de catalogue: 10200-1-AP

Phare

36 Publications

## Informations de base

Numéro de catalogue:  
10200-1-AP

Taille:  
150ul, Concentration: 350 µg/ml by  
Nanodrop;

Hôte:  
Lapin

Isotype:  
IgG

Immunogen Catalog Number:  
AG0259

Numéro d'acquisition GenBank:  
BC000383

Identification du gène (NCBI):  
9589

Nom complet:  
Wilms tumor 1 associated protein

MW calculé  
45 kDa

MW observés:  
50-55 kDa

Méthode de purification:  
Purification par affinité contre  
l'antigène

Dilutions recommandées:  
WB 1:2000-1:16000  
IP 0.5-4.0 ug for IP and 1:2000-1:16000  
for WB

## Applications

Applications testées:  
IP, WB, ELISA

Demandes citées:  
IF, IHC, IP, RIP, WB

Spécificité de l'espèce:  
Humain, rat, souris

Espèces citées:  
Humain, rat, souris

Contrôles positifs:

WB : cellules HeLa, cellules HepG2, cellules Jurkat,  
cellules K-562, cellules L02, cellules MOLT-4

IP : cellules Jurkat, cellules HEK-293

## Informations générales

WTAP, also named as KIAA0105 and hFL(2)D, is previously identified as a protein associated with Wilms' tumor-1 (WT-1) protein that is essential for the development of the genitourinary system. It is a Pre-mRNA-splicing regulator protein. It is a regulatory subunit of the WMM N6-methyltransferase complex which plays a role in the efficiency of mRNA splicing and processing and mRNA stability. It is required for accumulation of METTL3 and METTL14 to nuclear speckle. MW of WTAP is 50-55 kDa due to phosphorylation.

## Publications notables

Autrice	Pubmed ID	Journal	Application
Yong Ge	34467630	EMBO Rep	WB,IP
Yuanpei Li	36289222	Nat Commun	WB,IHC,IF
Lingfang Wang	36288717	Cell Rep	WB

## Stockage

Stockage:

Stocker à -20°C. Stable pendant un an après l'expédition.

Tampon de stockage:

PBS avec azoture de sodium à 0,02 % et glycérol à 50 % pH 7,3

L'aliquotage n'est pas nécessaire pour le stockage à -20C

\*\*\* Les 20ul contiennent 0,1% de BSA.

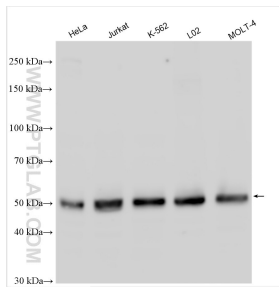
For technical support and original validation data for this product please contact:

T: 1 (888) 4PTGLAB (1-888-478-4522) (toll free  
in USA), or 1(312) 455-8498 (outside USA)

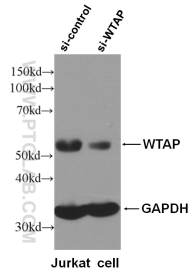
E: proteintech@ptglab.com  
W: ptglab.com

This product is exclusively available under Proteintech Group brand and is not available to purchase from any other manufacturer.

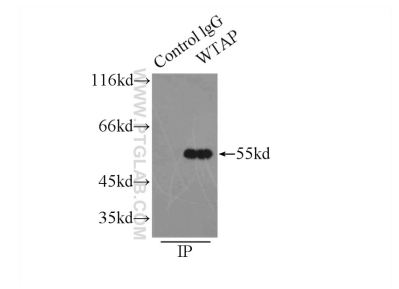
## Données de validation sélectionnées



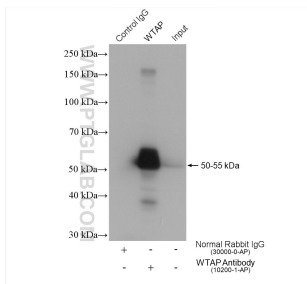
HeLa cells were subjected to SDS PAGE followed by western blot with 10200-1-AP (WTAP antibody) at dilution of 1:8000 incubated at room temperature for 1.5 hours.



WB result of WTAP specific antibody (10200-1-AP, 1:6000) with si-control and si-WTAP transfected Jurkat cells.



IP Result of anti-WTAP (IP:10200-1-AP, 3ug; Detection:10200-1-AP 1:500) with HEK-293 cells lysate 2500ug.



IP result of anti-WTAP (IP:10200-1-AP, 4ug; Detection:10200-1-AP 1:8000) with Jurkat cells lysate 2280 ug.