

À des fins de recherche uniquement

Anticorps Polyclonal de lapin anti-APEX1



Numéro de catalogue: 10203-1-AP

Phare

20 Publications

Informations de base

Numéro de catalogue:
10203-1-AP

Taille:
150ul, Concentration: 800 µg/ml by Nanodrop and 533 µg/ml by Bradford method using BSA as the standard;

Hôte:
Lapin

Isotype:
IgG

Immunogen Catalog Number:
AG0251

Numéro d'acquisition GenBank:
BC002338

Identification du gène (NCBI):
328

Nom complet:
APEX nuclease (multifunctional DNA repair enzyme) 1

MW calculé:
36 kDa

MW observés:
36 kDa

Méthode de purification:
Purification par affinité contre l'antigène

Dilutions recommandées:
WB 1:500-1:2000
IP 0.5-4.0 ug for IP and 1:500-1:2000 for WB
IHC 1:20-1:200
IF 1:10-1:100

Applications

Applications testées:
IF, IHC, IP, WB, ELISA

Demandes citées:
CoIP, IF, IHC, WB

Spécificité de l'espèce:
Humain, rat, souris

Espèces citées:
Humain, rat, souris

Remarque-IHC: il est suggéré de démasquer l'antigène avec un tampon de TE buffer pH 9.0; (*) A défaut, le démasquage de l'antigène peut être effectué avec un tampon citrate pH 6,0.

Contrôles positifs:

WB : cellules HeLa, tissu cérébral de souris

IP : cellules HeLa,

IHC : tissu de cancer du sein humain,

IF : cellules MCF-7,

Informations générales

APEX1, also named as APE, APE1, HAP1 and REF-1, belongs to the DNA repair enzymes AP/ExoA family. It is a multifunctional protein that plays a central role in the cellular response to oxidative stress. The two major activities of APEX1 are in DNA repair and redox regulation of transcriptional factors. APEX nuclease is a DNA repair enzyme having apurinic/aprimidinic (AP) endonuclease, 3-prime,5-prime-exonuclease, DNA 3-prime repair diesterase, and DNA 3-prime-phosphatase activities. On the other hand, APEX1 also exerts reversible nuclear redox activity to regulate DNA binding affinity and transcriptional activity of transcriptional factors by controlling the redox status of their DNA-binding domain, such as the FOS/JUN AP-1 complex after exposure to IR. APEX1 is involved in calcium-dependent down-regulation of parathyroid hormone (PTH) expression by binding to negative calcium response elements (nCaREs). When acetylated at Lys-6 and Lys-7, APEX1 stimulates the YBX1-mediated MDR1 promoter activity, leading to drug resistance. It also acts as an endoribonuclease involved in the control of single-stranded RNA metabolism. It plays a role in regulating MYC mRNA turnover by preferentially cleaving in between UA and CA dinucleotides of the MYC coding region determinant (CRD). In association with NMD1, APEX1 plays a role in the rRNA quality control process during cell cycle progression. 10203-1-AP is a rabbit polyclonal antibody raised against full length APE1 of human origin.

Publications notables

Autrice	Pubmed ID	Journal	Application
Meng Chen	36096885	Cell Death Dis	WB
Wei Liang	31564904	Onco Targets Ther	WB
Jingjing Zhang	29066842	Sci Rep	IF

Stockage

Stockage:

Stocker à -20°C. Stable pendant un an après l'expédition.

Tampon de stockage:

PBS avec azoture de sodium à 0,02 % et glycérol à 50 % pH 7,3

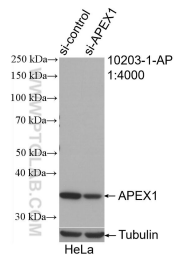
L'aliquotage n'est pas nécessaire pour le stockage à -20C

*** Les 20ul contiennent 0,1% de BSA.

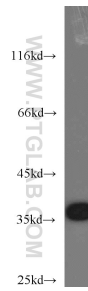
For technical support and original validation data for this product please contact:
T: 1 (888) 4PTGLAB (1-888-478-4522) (toll free in USA), or 1(312) 455-8498 (outside USA)
E: proteintech@ptglab.com
W: ptglab.com

This product is exclusively available under Proteintech Group brand and is not available to purchase from any other manufacturer.

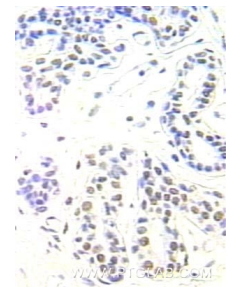
Données de validation sélectionnées



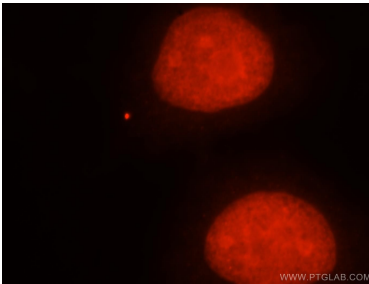
WB result of APEX1 antibody (10203-1-AP; 1:4000; incubated at room temperature for 1.5 hours) with sh-Control and sh-APEX1 transfected HeLa cells.



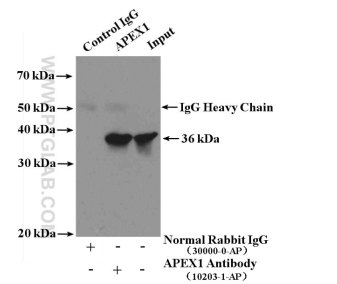
HeLa cells were subjected to SDS PAGE followed by western blot with 10203-1-AP (APEX1 antibody) at dilution of 1:1000 incubated at room temperature for 1.5 hours.



Immunohistochemical analysis of paraffin-embedded human breast cancer using 10203-1-AP (APEX1 antibody) at dilution of 1:100 (under 25x lens).



Immunofluorescent analysis of MCF-7 cells, using APEX1 antibody 10203-1-AP at 1:25 dilution and Rhodamine-labeled goat anti-rabbit IgG (red).



IP Result of anti-APEX1 (IP:10203-1-AP, 4ug; Detection:10203-1-AP 1:1000) with HeLa cells lysate 1600ug.